



Ligue des Bibliothèques Européennes de Recherche
Association of European Research Libraries

New Library Buildings in Europe

DOCUMENTATION 2012

Edited by Mahulena Svobodová

LIBER
LAG 2012

NTK

01 2 674 088 12 67 43 26 383 12
Národní technická knihovna
National Technical Library

NEW LIBRARY BUILDINGS IN EUROPE

METRO@STAV

techo[®]

vitra.

 **dirp**

FORSTER 



REZIDENCE KORUNNÍ

SEKYRA **GROUP**



Ligue des Bibliothèques Européennes de Recherche
Association of European Research Libraries

Národní technická knihovna

New Library Buildings in Europe

DOCUMENTATION 2012

Edited by Mahulena Svobodová

Prague

2012

LIBER
LAG 2012

NTK
50°6'14.083"N, 14°23'26.365"E
Národní technická knihovna
National Technical Library

Published on the occasion of the 16th seminar of the LIBER Architecture Group, held at the National Technical Library, Prague, 16 to 20 April 2012

LIBER Architecture Group

Dr. Ulrich Niederer (chair) Zentral- & Hochschulbibliothek, Luzern
Alessandro Bertoni Università Ca' Foscari di Venezia
Marie-Françoise Bisbrouck Université Paris-Sorbonne (Paris IV)
Graham Bulpitt Kingston University, Kingston-upon-Thames
Inken Feldsien-Sudhaus Technische Universität Hamburg-Harburg
Martin Hallik University of Tartu Library
Steen Bille Larsen The Royal Library, Copenhagen
Liesbeth Mantel TU Delft Library
Philippe Marcerou Bibliothèque interuniversitaire de la Sorbonne
Elmar Mittler (corresponding member)
Niedersächsische Staats- & Universitätsbibliothek, Goettingen
Sylvia van Peteghem Ghent University
Araceli Sanchez-Piñol de Anta Biblioteca Nacional de España
Martin Svoboda National Technical Library, Prague
Márta Virágos University of Debrecen

This work is protected by the Czech Act No. 121/2000 on Copyright and Rights Related to Copyright as amended.

It is also available as an Open Access version through the publisher's homepage (<http://liber-lag2012.techlib.cz/en/889-new-library-buildings/>) and through the Liber Architecture Group homepage (<http://147.88.230.242/liber-lag/lagepub.htm>).

This work is licensed under the Creative Commons License 3.0 "by-nc-nd", allowing you to download, distribute and print the document in a few copies for private or educational use, given that the document stays unchanged and the creator is mentioned. Commercial use is not covered by the licence.



Published by Národní technická knihovna

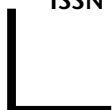
Technická 6,
160 80 Praha 6
Czech Republic

Printed in the Czech Republic

Cover Design & Page Layout Lukáš Kalivoda

ISBN 978-80-86504-25-4 / 978-80-86504-26-1 (PDF)

ISSN 2227-2585 / 2227-2593 (online)



Contents

Foreword	7
Acknowledgement	8
Akademická knihovna Jihočeské univerzity v Českých Budějovicích (Academic Library of the University of South Bohemia in České Budějovice). České Budějovice, Czech Republic	9
Regional Library of Highlands. Havlíčkův Brod, Czech Republic	19
Městská knihovna Louny (City library of Louny). Louny, Czech Republic	27
Town Library in Soběslav. Soběslav, Czech Republic	35
Bibliothèque universitaire – Section Santé. Nantes, La France	45
Bibliothèque de Droit, Economie, Gestion. Rennes, La France	53
Universitäts- und Landesbibliothek Düsseldorf: Fachbibliothek Medizin in der O.A.S.E. Düsseldorf, Germany	61
Universitätsbibliothek Freiburg. Freiburg, Germany	69
John Paul II Library. Maynooth, Ireland	77
Information Expertise Centre. Eindhoven, Netherlands	85
Tilburg University Library. Tilburg, Netherlands	93
Centrum Informacji Naukowej i Biblioteka Akademicka (CINiBA), The Scientific Information Centre and Academic Library. Katowice, Poland	101
Library of Poznan University of Technology. Poznan, Poland	111
University Library of the Catholic University in Ruzomberok. Ružomberok, Slovakia	119
Zentral- und Hochschulbibliothek Luzern – Standort UNI/PHZ-Gebäude. Lucerne, Switzerland	129
University Library. Aberdeen, United Kingdom	137
The McClay Library. Belfast, United Kingdom	145

University of Edinburgh Main Library. Edinburgh, United Kingdom	153
Dame Elizabeth Esteve-Coll Centre. Kingston, United Kingdom	161
Central Saint Martins College of Arts and Design Library. London, United Kingdom	169
Bodleian Libraries. Oxford, United Kingdom	179
Questionnaire: Description of New University and Research Library Buildings in Europe	189
Cuestionario: descripción de bibliotecas de investigación y universitarias de reciente construcción en Europa	194
Questionnaire: sur les nouveaux bâtiments de bibliothèques universitaires et de recherche en Europe	199
Fragebogen: Neue Gebäude von Universitätsbibliotheken und Wissenschaftlichen Bibliotheken	204
Questionario: descrizione nuovi edifici di biblioteche universitarie e di ricerca in Europa	209

Foreword

On behalf of the LIBER Architecture Group, I am delighted to introduce this documentation which draws together information about library building projects across Europe. In common with earlier surveys, a range of projects are presented including new buildings, renovations, refurbishments and extensions. Our aim is to provide librarians and architects with a wide variety of case studies and the concepts upon which they are based; hopefully, people involved in building projects will be able to find similar projects, to gain new ideas, to make professional contacts and to learn from each other.

This is the tenth occasion when the LIBER Architecture Group has published a collection of case studies to coincide with a seminar organized by the Group. This time, it is the 16th seminar, hosted by the National Technical Library in Prague. I am delighted to report that the National Technical Library has also established a database which will allow better access to the information on all the projects covered in the printed documentation. We also hope to be able to include information from projects covered in earlier volumes in the near future.

I would like to take this opportunity to thank Martin Svoboda, Director of the National Technical Library, and his colleagues for making our wish come true – not only having documentation in print but also in digital form in this new, sustainable database! I am confident that this will become an important – and accessible – resource about library buildings throughout Europe.

Ulrich Niederer
LIBER Architecture Group Chair
March 2012

Acknowledgement

Three and a half years ago the National Technical Library opened its brand new home designed and built as a genuine Gesamtkunstwerk. This is why we took the invitation to contribute to the “New Library Buildings in Europe” as yet another appreciation for the common work of the architects, designers, engineers, librarians, technicians and all the other professions who contributed to the stunning result. Although we were aware of the published Documentations produced by the LIBER Architecture Group and we encouraged our architects to get acquainted with them, we never made it to the Seminar. So it was a bit of a surprise when, during the Madrid Seminar in 2010, I was invited to become a member of LAG. Perhaps it was the result of the reception of my presentation of the new building combined with the appeal of Prague that we were offered the opportunity to host the next Seminar in the National Technical Library.

Hosting the Seminar has been regularly accompanied with the publication of documentation on new libraries built in Europe in the past two years. The LAG meeting raised the idea of converting the printed collection into a searchable database. The next logical step was an easy one: why not use the database as a vehicle to collect the various library descriptions and generate the body of the publication from these records. And that is what we did. At this point we have completed only the collection and the export-to-print functionality, the multi-facet search interface is yet to be completed and we expect to do so this year.

You are now leafing through the result of this effort. It would not have been possible without LAG extending us the confidence that we will manage this uneasy task in time. I am thankful for that. At the same time my thanks go to Csilla Szlíz and Jiří Znamenáček, who converted the questionnaires into a functioning database, Mahulena Svobodová, who patiently urged the contributors and carefully edited the whole book, Lukáš Kalivoda, who is responsible for its marvellous look, Eva Dibuszová who supervised the whole production process and, last but not least, to all the twenty-one contributors from nine European countries.

Martin Svoboda
LIBER Architecture Group member

**Akademická knihovna Jihočeské
univerzity v Českých Budějovicích
(Academic Library of the University
of South Bohemia in České Budějovice).
České Budějovice, Czech Republic**

A General information about your library

a Name and address

- 1 University library
- 2 Akademická knihovna Jihočeské univerzity v Českých Budějovicích
(Academic Library of the University of South Bohemia in České
Budějovice) /
University of South Bohemia in České Budějovice
- 3 Branišovská 31b, 370 05 České Budějovice
- 4 T +420 389 036 666, E library@lib.jcu.cz
- 5 PhDr. Helena Landová
- 6 Helena Landová, landovah@lib.jcu.cz

b Population served

- 7 16 150
- 8 13 300
- 9 N/A
- 10 1 150

c Conditions of the library (before the new project)

- 11 N/A (there were several small libraries in different University buildings)
- 12 170 (in all libraries together)
- 13 250 000 volumes (in all libraries together)
- 14 20 000 volumes (in all libraries together)
- 15 230 000 volumes
- 16 25 (in all libraries together)
- 17 50 hrs/week (it was different in each library, at max it was 50 hrs/week)

B The new building: aims and features

a Architect(s)

- 18 A+U DESIGN, České Budějovice, www.arch.cz/audesign
- 19 Ing. arch. Dagmar Polcarová
- 20 new building

b Aims of the new building

- 21 The main target was to build new, excellently equipped central library for all departments of the university. The most important goals were:
 - › more holdings in open stacks
 - › extension of book storage capacity
 - › more reader seats
 - › special computer laboratory for information literacy lectures
 - › extension of the opening hours
 - › self-service loans and returns
 - › reception area
 - › entrance with access control
 - › access for users with disabilities
 - › improving working conditions for staff
 - › exhibition area
 - › library café

c Special Features

- 22 Library is located just in the centre of the university campus, very close to the most of other university facilities (rectorate, faculty buildings, dormitories etc.)

- 23 The architectonic design of the building reflects its function and spiritual character. The main construction material is gray walls – traditional, centuries certified element. Facades of the buildings will carry gentle relief in the form of “backs of books” used symbolically in the front of the library. Both buildings will have glass communication halls in the opposite fronts. After the university assembly hall is built, all the three structures will be connected with a glass corridor.

C Technical information about the new building

a Floor area (24 to 35)

24 5 650 m²

Divided into

25 2 950 m²

Special rooms (26, 27, 28, 29)

26 59 m²

27 111 m²

28 137 m²

29 0

Special activities (30, 31, 32)

30 584 m²

31 0

32 24 m²

33 267 m²

34 811 m²

35 285 m²

36 3 levels

37 500

Divided into

38 40

39 60

- 40 30
- 41 370

b Total potential capacity of shelving (linear metres or volumes)

- 42 750 000 volumes
- Including
- 43 175 000 volumes
- 44 575 000 volumes
- 45 included in 43 (all closed access stacks are equipped with compact shelves)
- 46 5 000
- 47 0
- 48 36

c Mechanical features

- 49 Air conditioning with cooling
- 50 Central heating system with automatic control
- 51 General lighting combined with special lighting on each desk. The bright sunlight is reduced by the louvers in the windows.
- 52 The noise is minimized by using sound baffle panels around the copy machines and printers.
- 53 3 elevators (1 for public, 1 for staff, 1 for books)
- 54 none
- 55 RFID tags for books in open stacks
- 56 Full-computerised house control
- 57 LAN (1 Gb)
WiFi available everywhere
- 58 RFID technology for self-services (check-in/check-out) and returned books sorting, card operated access control system

D Schedule of the building process (dates)

- 59 2002–2005
- 60 2006
- 61 2007
- 62 3/2008
- 63 4/2008–7/2009
- 64 8/2009–11/2009
- 65 13. 1. 2010

E Costs (including taxes)

- 66 No fee, site is the property of University of South Bohemia in České Budějovice
- 67 N/A
- 68 N/A
- 69 N/A
- 70 170 million CZK (6.8 million EUR)

F Publications



Front View of Academic Library © Ing. Jan Cihlák



South Front View © Ing. Jan Cihlák



Foyer © Ing. Jan Cihlář



Reading Rooms on 1st and 2nd Floor © Ing. Jan Cihlář



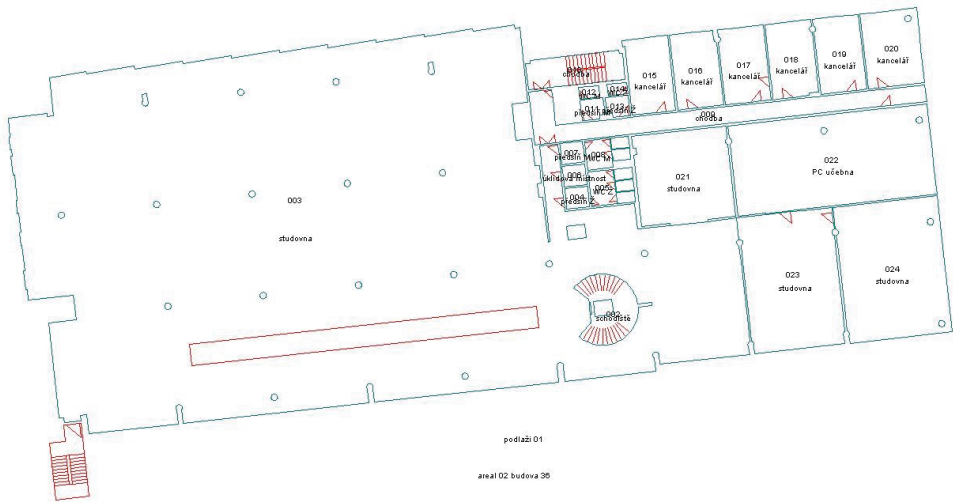
Reading Rooms on 1st and 2nd Floor © Ing. Jan Cihlář



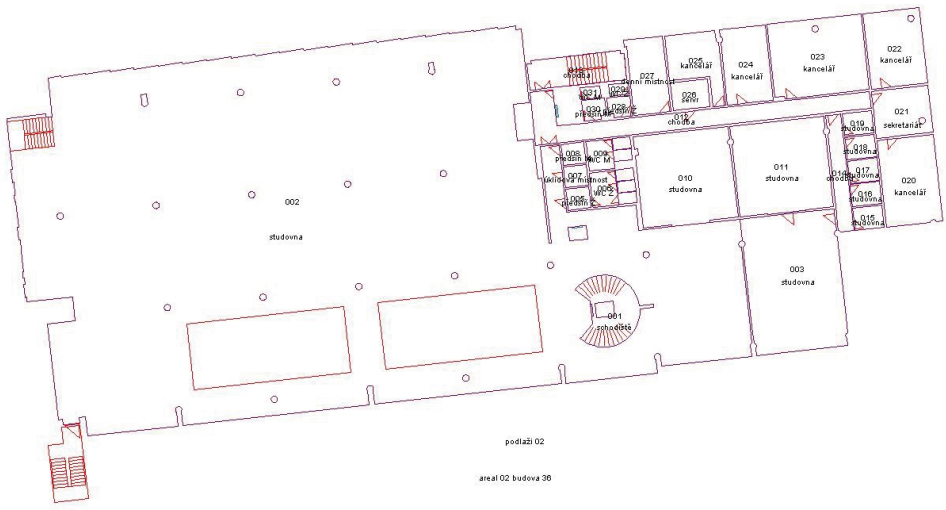
Stairs and Lift © Ing. Jan Cihlář



Plan of the First Floor © Ing. Jan Cihlář



Plan of the Second Floor © Ing. Jan Cihlář



Plan of the Third Floor © Ing. Jan Cihlář

Regional Library of Highlands. Havlíčkův Brod, Czech Republic

A General information about your library

a Name and address

- 1 Regional public library
- 2 Regional Library of Highlands /
Vysocina Region
- 3 Havlíčkovo náměstí 87, Havlíčkův Brod, Czech Republic
- 4 T +420 569 400 499, F +420 569 400 490, E knihovna@kkvysociny.cz
- 5 Mgr. Veronika Peslerová
- 6 Ing. Jitka Hladíková, hladikova@kkvysociny.cz

b Population served

- 7 6 646
- 8 0
- 9 0
- 10 0

c Conditions of the library (before the new project)

- 11 802 m²
- 12 143
- 13 258 653 volumes
- 14 75 009 volumes
- 15 183 644 volumes
- 16 37

17 51 hours per week, 294 days per year

B The new building: aims and features

a Architect(s)

- 18 htsA, Ing. arch. Ivo Herman, Ing. arch. Aleš Tomášek, Robert Seidl, Letenské náměstí 3, Praha
- 19 Ing. arch. Ivo Herman, Ing. arch. Aleš Tomášek, Robert Seidl
- 20 new building

b Aims of the new building

- 21 The main objective is to build, at one place, a modern library with complex services that reflect all readers' needs. We want to offer maximum of our documents in an open access storage, more study capacity for learning as well as relaxation in a pleasant atmosphere. We would like to provide the public with a range of cultural and educational activities. The new library should become a meeting point and the centre of free-time activities during our extended working hours.

The vision is to build an open institution that offers wide range of services and that is a constantly developing unit bringing more information, cultural and educational opportunities to the public in our region. We will offer place for meetings of all kinds, we will enable access to a large fund of documents and new information technologies.

The main support will be brought by our professional staff. We will create a modern institution which meets the highest demands of our funder – the Highlands Region.

Slogan: Library – the most important place in your life.

c Special Features

- 22 Construction property for the new building lies near the centre of Havlickuv Brod and is currently used by a local County Hospital.
- 23 The new building is going to be a completely new construction. In its bottom part there is a street – a natural pathway from the centre. The level of this street creates a pre-entrance space followed by staff entrance leading to the lower floor.

The building is a 2-storey construction, partly placed underground and with a green roof. From the outside the building is formed by three glass walls: by southern side 2-storey façade with the main entrance, western side 2-storey façade with the staff/service entrance as well as

garage gate, and the northern side 1-storey façade office part of the building and a set of skylights in the green roof.

This concept limits the length of facades to an accessible scale—there are quite small houses in the library surroundings. It also minimizes heating loss, heating demands and the running costs as well as demands for other technical equipment.

Facades enable view overlooking the main reading space. Glass walls are possible to open and together with the skylights they allow natural ventilation in all directions.

Ground plan is in the shape of uneven trapezium.

After entering the building, visitor passes cafeteria and comes to the entrance hall with public PC area. The entrance hall serves also as an exhibition space. Light comes to this area through an opening in the upper floor. In the entrance hall there are educational rooms as well as lavatories and a cloakroom. To the western side of the building there is a garage on the ground floor and a technical room with a book stock.

Open access book space as well as offices are located on the upper floor – all area is evenly illuminated by natural lighting.

Offices are separated from the rest of the area by bookshelves and a glass wall. Despite the fact that the building itself is covered by soil from most sides, visitors have a visual contact with surrounding area from the upper floor too. Open free booking space is divided by a block of lavatories into eastern – busier and western – quieter part. This also affected librarian fund divisions.

The farthest part is a quiet study room.

C Technical information about the new building

a Floor area (24 to 35)

24 5 665 m²

Divided into

25 2 200 m²

Special rooms (26, 27, 28, 29)

26 1 hall for 91 people, 1 lounge – 70 m²

27 1 computer study, 30 m²

28 no

29 As in No 27. – 1 computer study, 30 m²

Special activities (30, 31, 32)

30 entrance hall 213 m², lounge 70 m²

31 As in No 26. – 1 hall for 91 people, 1 lounge, 70 m²

32 cafeteria 150 m²

33 500 m²

34 530 m², technical rooms 66 m²

35 510 m² (incl. machine shop 120 m², staff cloakroom 76 m²), car park for 50 cars (1 150 m²)

36 2 levels

37 335 seats

Divided into

38 91 seats in hall, 40 seats in lounge

39 12 seats in computer study, 20 seats in public internet area, 10 seats at computer searching catalogues

40 12 seats in computer study, 40 seats in lounge

41 162 seats

b Total potential capacity of shelving (linear metres or volumes)

42 350 000 volumes

Including

43 5 258 linear metres of shelving in open access as projected

44 156 linear metres

45 5 700 linear metres

46

47

48 40

c Mechanical features

49 Air Conditioning with temperature adjustment of air mains, natural ventilation operated automatically

- 50 Hot-water heating (radiators), the heating source is shared with neighbouring hospital
- 51 Natural even lighting all over the open-access space, fluorescent tubing
- 52
- 53 1 public lift, 2 service lifts
- 54 no
- 55 yes
- 56 yes
- 57 Planned CAT 6E
- 58 Outside blinds

D Schedule of the building process (dates)

- 59
- 60 2006
- 61 Project was finished in 2009
- 62
- 63
- 64
- 65 Depending on financing 2014–2020

E Costs (including taxes)

- 66 0
- 67 Financial estimate based on project: 204 million CZK (according to a financial situation in 2009) (8,2 million EUR)
- 68 0
- 69 0
- 70 0

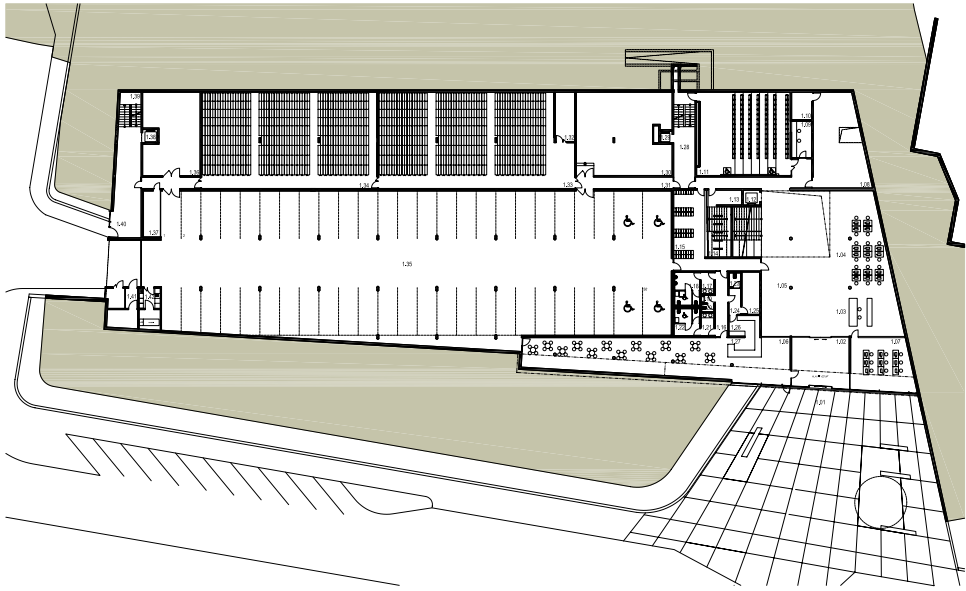
F Publications



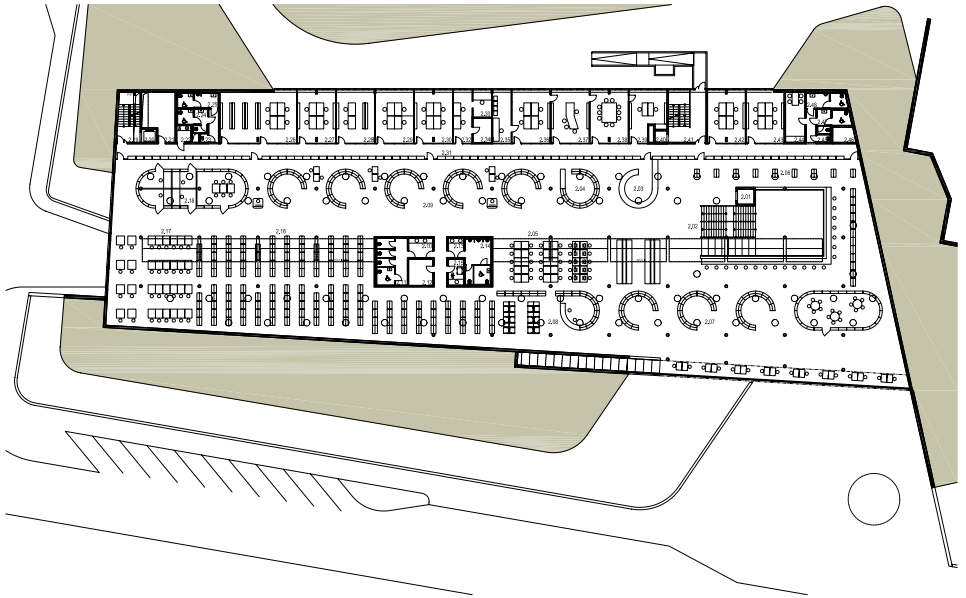
Main Facade



Interior

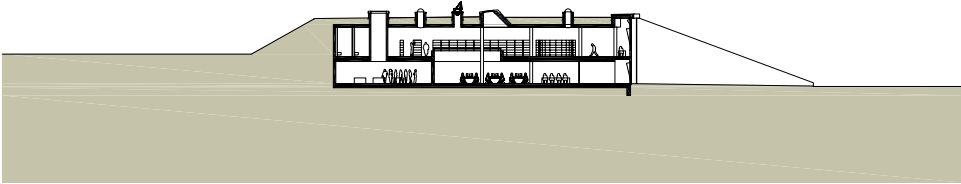
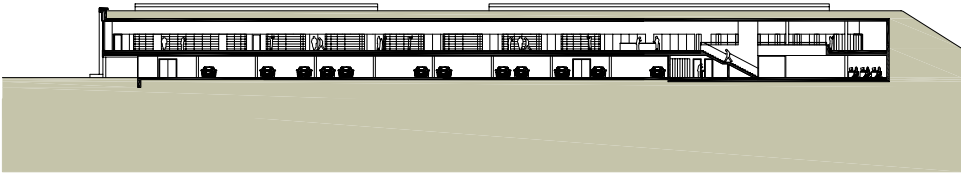


1st Floor



2nd Floor

Regional Library of Highlands. Havlíčkův Brod, Czech Republic



Sections

Městská knihovna Louny (City library of Louny). Louny, Czech Republic

A General information about your library

a Name and address

- 1 Public, city library
- 2 Městská knihovna Louny (City library of Louny) / Municipality of Louny
- 3 Mírové náměstí 1, 440 01 Louny, Czech Republic
- 4 T +420 734 521 903, E mkl@mkl.cz
- 5 Mgr. Dagmar Bahnerová
- 6 Mgr. Dagmar Bahnerová, +420 736 645 912

b Population served

- 7 4 344 (9. 12. 2011)
- 8 629 students from 16 to 27 years, 1073 students from 6 to 15 years (9. 12. 2011)
- 9 0
- 10 10

c Conditions of the library (before the new project)

- 11 702 m²
- 12 115
- 13 155 647 books
- 14 109 292 books

- 15 46 355 books
- 16 12.3
- 17 46 hours per week, 334 days per year

B The new building: aims and features

a Architect(s)

- 18 REAL-INVESTA spol. s r. o.
- 19 Ing. Jan Svitavský
- 20 renovation

b Aims of the new building

- 21 The aim was to build a multifunctional, educational and information centre of city library. A strong motive was also the need to find a use for the empty building of the former City court. Another problem were the insufficient and inadequate spaces for the operation of the municipal library. The old library spaces were small and inadequate for all activities we offer to our visitors.

c Special Features

- 22 The library is located in the centre of the town, on the main square, in the old building of former town hall and city court.
- 23 The building stands on a "U" plan with a big space (court) in the centre, with narrow and small renaissance windows. It has disabled access.

C Technical information about the new building

a Floor area (24 to 35)

- 24 1 591 m²
Divided into
- 25 4 rooms
Special rooms (26, 27, 28, 29)
- 26 1 audiovisual and multimedia room

27 4 rooms (see number 26, 1 in studding department, 1 in children's department and internet café)

28 1 space

29 5 (see number 26, 1 studio, 1 small room, 1 in café, 1 in children's department)

Special activities (30, 31, 32)

30 2 spaces (1 in main gallery, 1 in café)

31 5 (see number 26, 1 studio, 1 small room, 1 in café, 1 in children's department)

32 1

33 6 rooms

34 16 rooms

35 1 lift, 11 toilets, 3 technical room, 6 stairs

36 4 levels (basement, 1st, 2nd floor and attic), 2 public levels (1st, 2nd floor)

37 313

Divided into

38 35

39 23

40 78

41 177

b Total potential capacity of shelving (linear metres or volumes)

42 1 858 linear meters

Including

43 1 738 linear meters

44 310 linear meters

45 0

46 190 linear meters

47

48 20

c Mechanical features

- 49 no
- 50 yes
- 51 yes
- 52 yes
- 53 1
- 54 no
- 55 yes (cameras)
- 56 yes
- 57
- 58

D Schedule of the building process (dates)

- 59 February 2006
- 60 May 2006
- 61
- 62 January 2009
- 63 13 months
- 64 April-July 2010
- 65 1. 8. 2010

E Costs (including taxes)

- 66 0
- 67 36 million CZK
- 68 7.5 million CZK
- 69 2.2 million CZK
- 70 45.7 million CZK

F Publications



Library, General View from the Square © Rostislav Glazer



Library – the New-Built Lift, View from the Courtyard © Hana Větrovská

Městská knihovna Louny (City library of Louny). Louny, Czech Republic



Non-fiction Department © Library archive



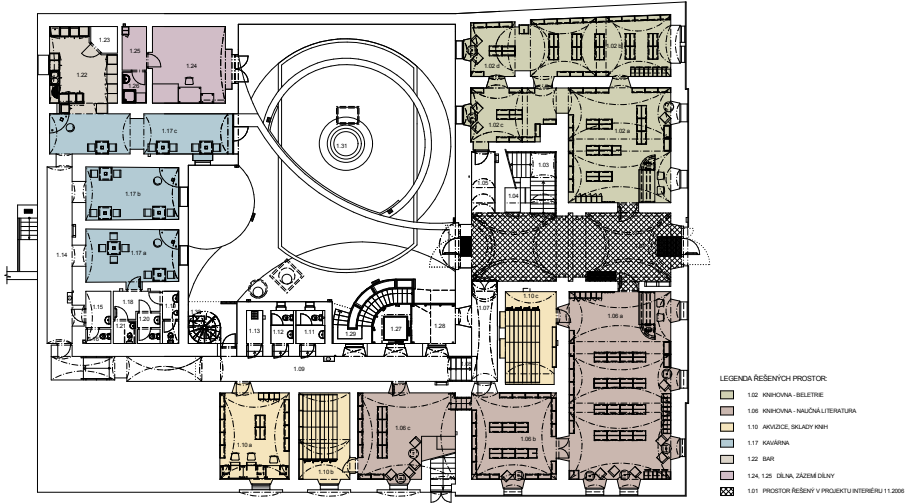
Exhibition Hall © Hana Větrovská



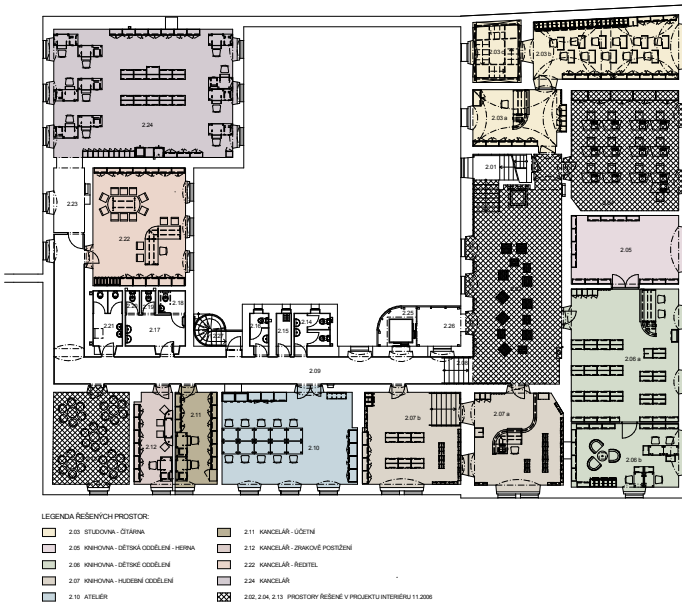
Multifunctional Hall © Hana Větrovská



Cultural Event in the Courtyard © Ondřej Kunc



Floor Plan Level 1 © REAL-INVESTA spol. s r. o.



Floor Plan Level 2 © REAL-INVESTA spol. s r. o.

Town Library in Soběslav. Soběslav, Czech Republic

A General information about your library

a Name and address

- 1 Public, town library
- 2 Town Library in Soběslav /
Město Soběslav (Municipality of Soběslav)
- 3 Horní příkopy 76/23, 392 01 Soběslav
- 4 T +420 381 524 187, E knihovnasobeslav@seznam.cz
- 5 Mgr. Alena Fremrová
- 6 +420 381 524 187

b Population served

- 7 1 409
- 8 N/A
- 9 N/A
- 10 N/A

c Conditions of the library (before the new project)

- 11 300 m²
- 12 30
- 13 31 000 volumes
- 14 30 000 volumes
- 15 1 000 volumes
- 16 3

- 17 Tuesday, Thursday 9–18, Wednesday 9–17, Friday 9–15, Saturday (once a month) 9–12

B The new building: aims and features

a Architect(s)

- 18 Ateliér Kročák – architekt, Riegrova 20, 370 01 České Budějovice
- 19 Ing. arch. Jaromír Kročák, Ateliér Kročák–architekt,
Collaboration: Ing. arch. Jana Rozkopalová, Ing. arch. Petr Hornát,
Ing. arch. Václav Čihák, Ing. Tomáš Fuit
- 20 renovation

b Aims of the new building

- 21 The main aim is to preserve and improve the premises of a historic castle, which had been decaying for a long time and the condition had been critical before the revitalisation.

The revitalisation and new use of the castle is in accordance with the needs of the town and the region—the building of the town library meant that a new role had been found for the historical castle. The castle premises are re-incorporated into the town.

Improvements of the preserved structures in light of the historic preservation and its preservation for future generations without any considerable intervention in the listed structures, maximum utilisation of the existing structures for the new construction, possible future disassembly of the new entrance extension without any considerable intervention in the historical structures.

The historical structures and the walls of the castle are permanently exhibited as an artefact thanks to the all-glass walls and the ceiling of the library container—a permanent exhibition of the development and transformation of the castle.

Thanks to the revitalisation of its castle Soběslav has obtained a complex information, cultural and education centre with a regional function.

c Special Features

- 22 Historic center of Soběslav. The premises are connected with the main pedestrian zone from the Soběslav housing estates to the square in the centre of the town.

23 The main design criterion for reconstruction and extension of the castle in consideration of the chosen functional purpose is the author's endeavour to connect the original premises with the new structures. This sets a limit for intervention in the existing historical structures. The temporary static safety measures in the form of rods and timber were replaced by a horizontal stiffening reinforced-concrete board built into the walls approximately in the middle of the palace wing. The board defines the floor of the inbuilt library "container" which might be disassembled and removed anytime in the future if future generations wish to change the premises and use them for different purposes.

The library container is both physically and technically separated from the existing wall and roof structures. The container is designed as an all-glass structure, the floor is complete with the required bearing capacity, the walls and the ceiling are all made of glass with sufficient distances from the internal face of the historical walls (with the distance of approx. 90–150 cm between the glass and the original wall). The container has its own "atmosphere" with minimum permanent humidity and temperature in the interior which is necessary for the protection of the stock of books, and the historical structures of the castle walls are, after construction of the container, still in the original "outdoor" setting with the original outdoor humidity and temperature parameters necessary for the stabilisation of the preserved building structures.

The reconstruction of the castle and construction of the library in the palace wing of the castle was completed in June 2010.

C Technical information about the new building

a Floor area (24 to 35)

24 746 m²

Divided into

25 700 m²

Special rooms (26, 27, 28, 29)

26 All services are available in the main library hall.

27

28 N/A

29

Special activities (30, 31, 32)

30 Exhibitions take place also in the main library hall.

31 0

32 0

33 2 rooms

34 1 room

35 2 lifts, toilets for staff, public and handicapped people

36 3 levels

37 cca 30–50 seats

Divided into

38 0

39 8

40 0

41 30

b Total potential capacity of shelving (linear metres or volumes)

42 35 000 volumes is the library's capacity, today it holds 28 852 volumes.

Including

43 28 600

44 252

45 0

46 0

47 0

48 3

c Mechanical features

49 yes

50 yes – gas heating

51 general lighting

52

53 2 elevators for people and for books

54

55 yes

56 yes

57

58

D Schedule of the building process (dates)

59

60 1998

61 2001–2009

62 2005

63 2005–2010

64 2010

65 2010

E Costs (including taxes)

66 0

67 0

68 0

69 0

70 44.5 million CZK (1.8 million EUR)

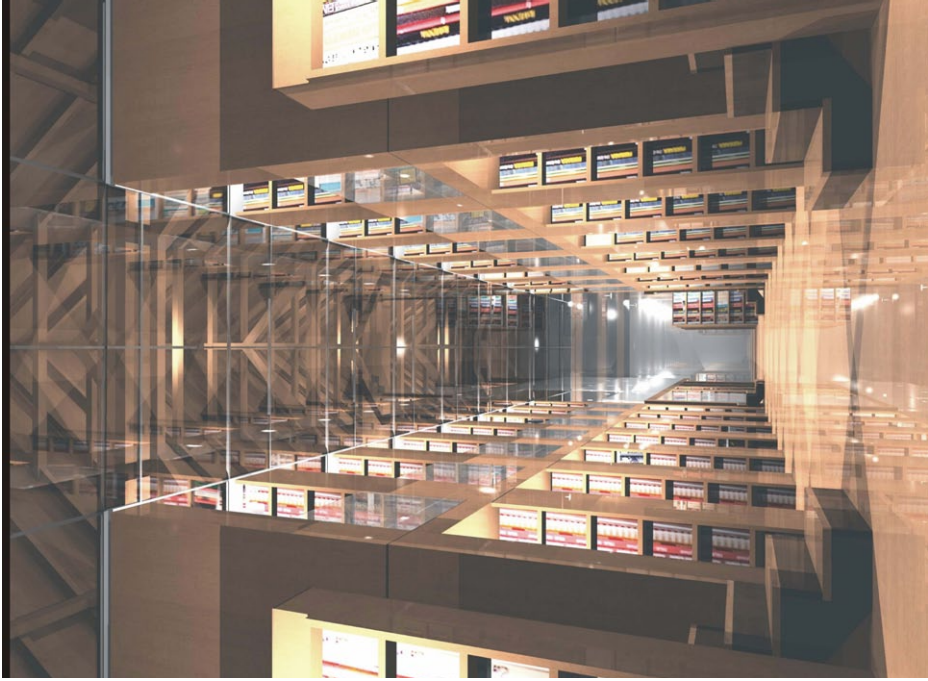
F Publications



Main Entrance © Ing. arch. Jaromír Kročák



Entrance to the Library through the Original Gothic Portal © Ing. arch. Jaromír Kročák



Illustrative View of the Main Hall © Ateliér Kročák

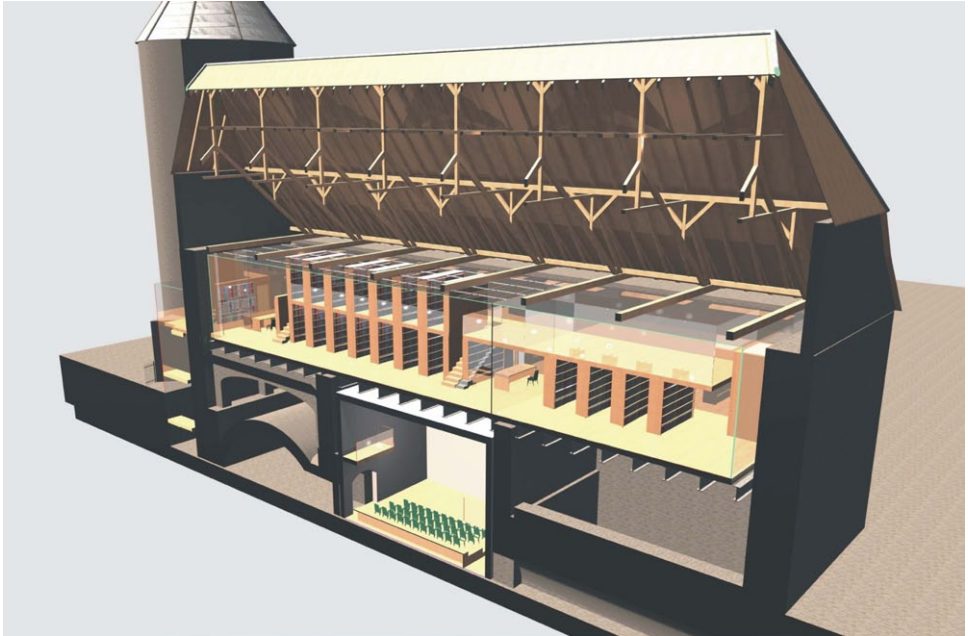


Stairs and Elevator to the Library
© Ing. arch. Jaromír Kročák

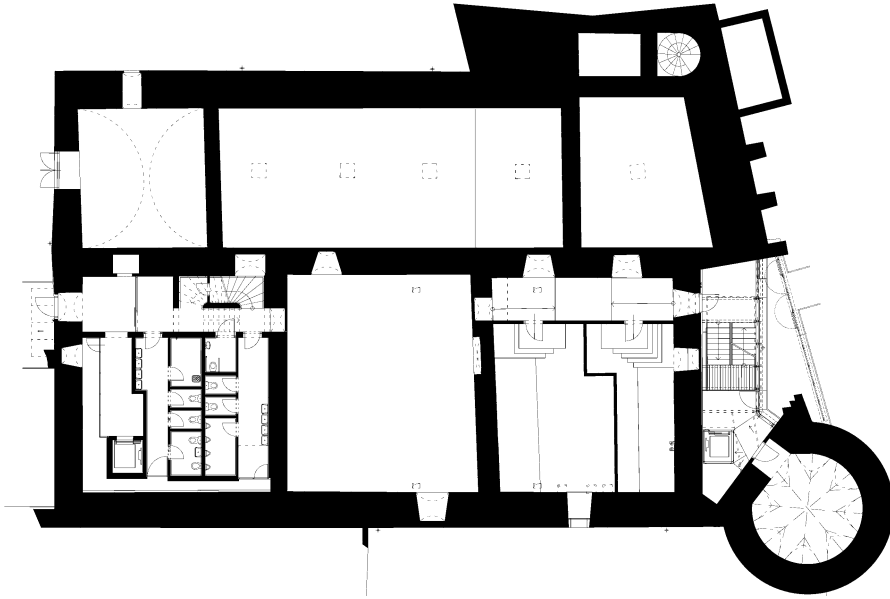
Town Library in Soběslav. Soběslav, Czech Republic



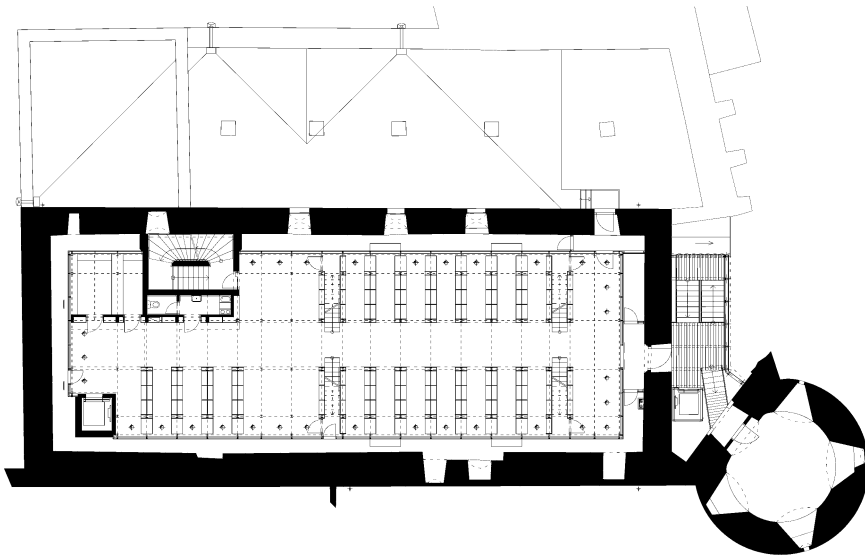
View of the Main Hall from the Castle Roof Truss © Ing. arch. Jaromír Kročák



Longitudinal Section of the Castle Wing with the Library Layout © Ateliér Kročák

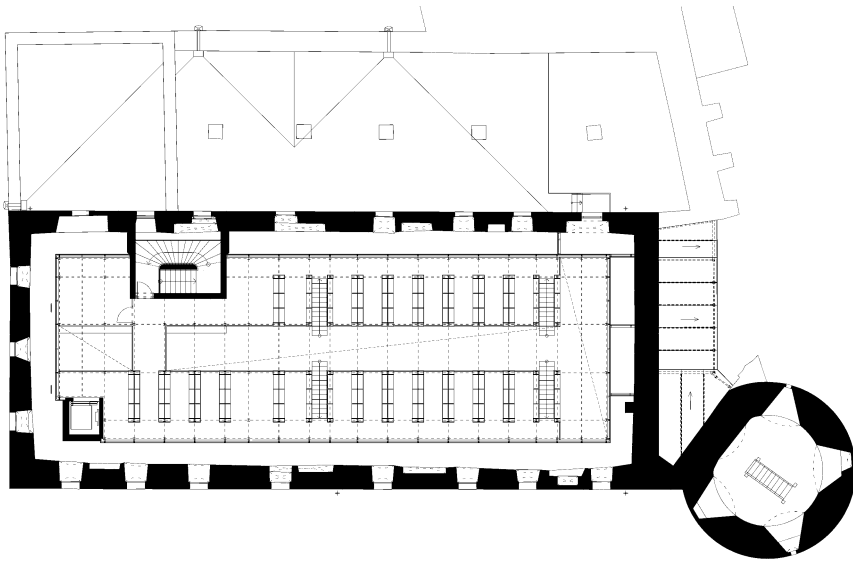


Ground Floor Plan © Ateliér Kročák

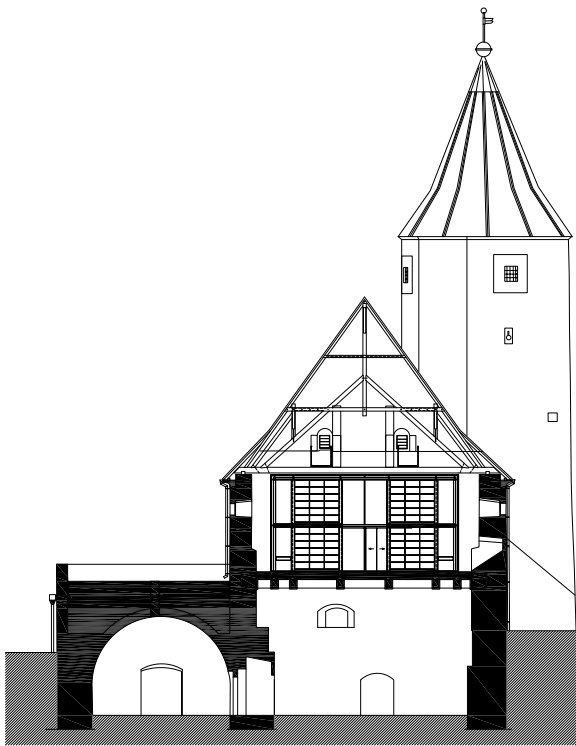


1st Floor Plan © Ateliér Kročák

Town Library in Soběslav. Soběslav, Czech Republic



2nd Floor Plan © Ateliér Kročák



Cross Section © Ateliér Kročák

Bibliothèque universitaire – Section Santé. Nantes, La France

A Information générale sur la bibliothèque

a Nom et adresse

- 1 Bibliothèque universitaire
- 2 Bibliothèque universitaire – Section Santé /
Université de NANTES
- 3 9 rue Bias, 44011 NANTES Cedex 1 (France)
- 4 T +33 2 53 47 47 00, F +33 2 53 48 47 13
- 5 Madame Hélène GROGNET
- 6 Monsieur Jean-Philippe SOUAN

b Population desservie

- 7 3 752
- 8 5 050
- 9 n.c.
- 10 890

c Situation de la bibliothèque (avant le nouveau projet)

- 11 3 168 m²
- 12 290
- 13 6 800 mètres linéaires
- 14 2 245 mètres linéaires
- 15 4 555 mètres linéaires
- 16 15,9

B Le nouveau bâtiment: buts et caractéristiques

a Architecte(s)

18 Jean-Pierre LOTT – 31 rue Coquillière 75001 PARIS, www.jplott.fr

19

20 construction

b Buts du nouveau bâtiment

21 Davantage de documents en libre accès. Davantage de places de consultation. Accroissement des documents informatiques et audiovisuels et mise à disposition des matériels nécessaires à leur consultation. Formation des lecteurs (salle de formation). Augmentation des horaires d'ouverture au public : 104 h 30 par semaine de septembre à fin mai; 47 h 30 de juin à août.

c Caractéristiques

22 Localisation de la bibliothèque dans la ville, proche de l'université et proche des transports publics.

23 Plan rectangulaire : 6 022 m² sur 3 niveaux (niveaux 4, 5 et 6 du bâtiment). Panneaux préfabriqués en béton sur la façade nord. Autres façades très vitrées. Dimension de la trame de construction : 7 m × 7 m entre les poteaux. Matériaux utilisés pour réduire les coûts de maintenance : double paroi vitrée sur la façade sud; pas de faux-plafonds pour minimiser les interventions ultérieures; gestion automatique de l'éclairage artificiel.

C Informations techniques sur le nouveau bâtiment

a La surface (25 à 36)

24 6 022 m²

Divisé en

25 4 820 m²

Salles spéciales (27, 28, 29, 30)

- 26 Surface comptée avec l'informatique
- 27 420 m²
- 28 24 m²
- 29 60 m²; 6 salles de travail en groupe (4, 6, 8, et 3 fois 12 places)
Salles pour autres activités (31, 32, 33)
- 30 221 m²
- 31 Voir salle de formation (point 29)
- 32 A l'extérieur de la bibliothèque
- 33 420 m²
- 34 782 m²
- 35 n. c.
- 36 3 niveaux publics
- 37 635
Divisé en
- 38 Commun avec informatique (point 39)
- 39 100
- 40 25 places en Formation ou 50 places en Réunion / Conférence
- 41 510

b Capacité potentielle totale de stockage (mètres linéaires ou vol.)

- 42 12 920 mètres linéaires
- 43 5 920 mètres linéaires
- 44 7 000 mètres linéaires
- 45 6 000 mètres linéaires
- 46 n. c.
- 47 Fonds ancien: 1 000 mètres linéaires
- 48 16,5 équivalents temps plein. Manque 1 emploi.

c Caractéristiques techniques

- 49 Ventilation
- 50 Radiateurs
- 51 Automatisé pour économies d'énergie
- 52 Système de sonorisation + baffles acoustiques
- 53 1 monte-charges de 1 250 kg
- 54 Non
- 55 Oui
- 56 Oui
- 57 Ethernet 100 Mbits par seconde
- 58

D Échéancier de réalisation

- 59 2001
- 60 2002
- 61 2008
- 62 2009
- 63 14 mois
- 64 2011
- 65 16 août 2011

E Coûts

- 66 Appartient à l'agglomération de NANTES Métropole
- 67 13 million EUR TTC
- 68 1,1 million EUR TTC
- 69 10% du coût des travaux
- 70 4,1 million EUR TTC

F Publications



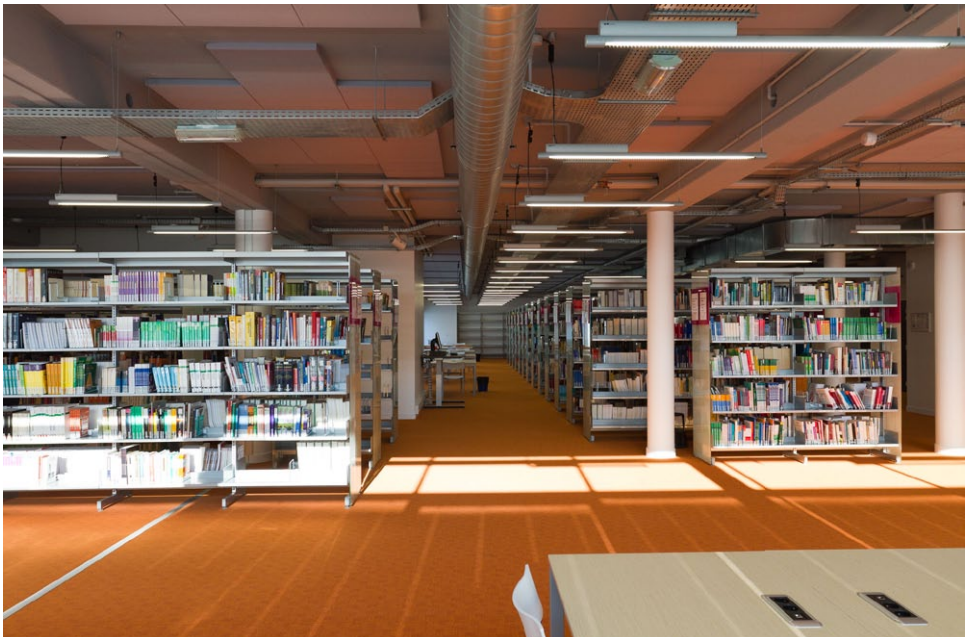
Entree



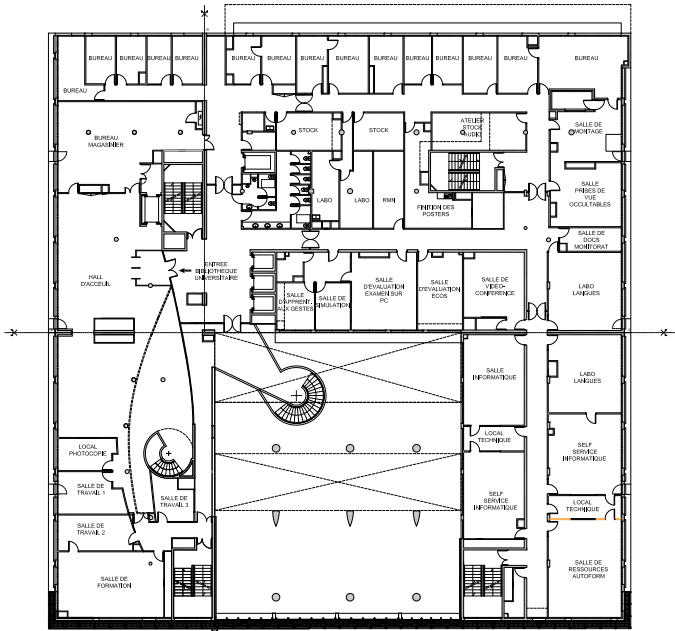
Hall – faculte



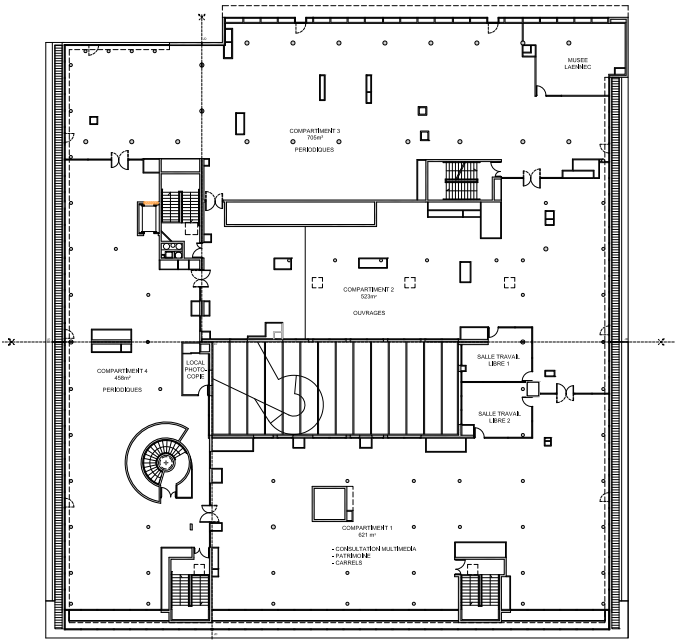
Ouvrages niveau 5



Rayonnages table elec



Plan – niveau 4



Plan – niveau 6

L

Bibliothèque de Droit, Economie, Gestion. Rennes, La France

A Information générale sur la bibliothèque

a Nom et adresse

- 1 Bibliothèque universitaire
- 2 Bibliothèque de Droit, Economie, Gestion /
Service commun de la Documentation, Université de RENNES 1
- 3 4 rue Lesage, CS 36402, 35064 RENNES Cedex (France)
- 4 T +33 2 23 23 34 00, F +33 2 23 23 34 04;
E francoise.le-quenven@univ-rennes1.fr
- 5 Madame Ghyslaine DUONG-VINH, directrice du Service commun
de la Documentation; Madame Françoise LE QUENVEN, responsable
de la bibliothèque de Droit, Economie, Gestion
- 6 Madame Françoise LE QUENVEN

b Population desservie

- 7 7 335 (2010)
- 8 8 200
- 9 n. c.
- 10 293

c Situation de la bibliothèque (avant le nouveau projet)

- 11 7 460 m²
- 12 360
- 13 8 090 mètres linéaires
- 14 1 025 mètres linéaires

- 15 11 660 mètres linéaires
- 16 21,8 (2010)
- 17

B Le nouveau bâtiment: buts et caractéristiques

a Architecte(s)

- 18 Atelier Bruno GAUDIN (75011 Paris) + Atelier Bruno GAUDIN (35136 Saint-Jacques de la Lande)
- 19
- 20 Construction (espace Jean Raux) + extension + restructuration du bâtiment qui servira d'extension à la bibliothèque actuelle.

b Buts du nouveau bâtiment

- 21 Offrir aux 8 200 étudiants du Campus-Centre et aux usagers professionnels des conditions d'accueil nettement améliorées (notamment en ce qui concerne le nombre de places de consultation : de 330 à 700 places.
Rationnaliser l'offre documentaire de l'université par intégration des collections des départements de Droit, Science politique, Sciences économiques et du Centre de recherche européenne de Rennes (CEDRE) dans les fonds de la bibliothèque.
Valoriser le Centre d'excellence Jean Monnet de Rennes en proposant un accueil en Centre-ville.
Davantage de documents en libre accès. Davantage de places de consultation. Développement de la bibliothèque dans le domaine de la recherche. Extension des horaires d'ouverture de la bibliothèque.

c Caractéristiques

- 22 La bibliothèque concernée par les travaux de restructuration-extension est située en plein centre-ville, sur le campus « Centre », au sein de la Faculté de Sciences Economiques de l'université de Rennes 1, non loin de la Faculté de Droit et Science Politique, mais aussi de l'IGR-IAE (Institut de gestion de Rennes–Institut d'administration des entreprises), de l'IEP (Institut d'études politiques) et de l'IPAG (Institut de préparation à l'administration générale).
A proximité immédiate d'une station de métro mais également très largement desservie par le réseau de bus de Rennes Métropole, la

bibliothèque est particulièrement accessible. Elle se trouve par ailleurs à proximité immédiate de la Présidence de l'université.

- 23** Restructuration d'un ancien bâtiment contigu à la BU actuelle : 3 ailes entourent un patio rectangulaire qui sera couvert d'une verrière et transformé en salle de lecture dont les murs seront les actuels murs extérieurs conservés en l'état, ainsi que leurs fenêtres.

La construction de l'extension (Espace Jean Raux), perpendiculaire au bâtiment rénové, présente des façades très vitrées.

L'ensemble du bâtiment est accessible aux personnes handicapées (rampe d'accès + ascenseurs).

Différents matériaux ont été utilisés pour réduire les coûts de maintenance: vitrage auto nettoyant, GTC (gestion technique centralisée), leds, asservissements multiples par le biais du SSI (système de sécurité incendie: centralisation des alarmes)...

C Informations techniques sur le nouveau bâtiment

a La surface (25 à 36)

24 9 534 m²

Divisé en

25 3 517 m²

Salles spéciales (27, 28, 29, 30)

26 50 m² (salle de conférence du Centre d'excellence Jean Monnet – CEJM)

27 20 postes répartis dans les espaces publics + Wifi + branchements électriques sur toutes les tables
tablestablestoutespour les ordinateurs personnels.

28 407 m² pour le Centre de recherches européennes

29 76 m² à double usage (réunions internes et formation des utilisateurs à la recherche)

Salles pour autres activités (31, 32, 33)

30 233 m² du hall d'accueil pour les expositions

31 50 m² (salle de séminaire et de visioconférence du CEJM)

32 Non

33 1 068 m²

- 34 4 620 m², dont 420 m² en stockage dense et 600 m² pour le fonds anciens
- 35 287 m²
- 36 2 niveaux publics (rez-de-chaussée et R+1) sur un total de 4 niveaux (sous-sol, rez-de-chaussée, R+1 et R+2)
- 37 700 dont 149 en tranche de travaux conditionnelle (64 places de travail de groupe)

Divisé en

- 38 30
- 39 43
- 40 30
- 41 600

b Capacité potentielle totale de stockage (mètres linéaires ou vol.)

- 42 8 520 mètres linéaires
- 43 3 900 mètres linéaires
- 44 4 620 mètres linéaires
- 45 460 mètres linéaires
- 46 0
- 47 Non
- 48 Personnel bibliothèque : 23,8 (dont 2 ETP pour le CEDRE) + vigiles et moniteurs étudiants pour ouverture tardive.

c Caractéristiques techniques

- 49 Centrale de traitement d'air double flux dans les salles de lecture, simple flux dans les bureaux.
- 50 Centrale de traitement de l'air + plafonds rayonnants, planchers chauffants et convecteurs selon les espaces.
- 51 Eclairage naturel par la verrière; éclairage d'ambiance dans les espaces publics allié à des liseuses à leds éclairant directement toutes les places de lecture.
- 52 Panneaux acoustiques, portes isophoniques.

- 53 2 ascenseurs et monte-charges internes existants remplacés par des monte-charges aux normes.
- 54 Non
- 55 Oui, RFID
- 56 Oui, Gestion technique centralisée (GTC)
- 57 Câblage de catégorie 6
- 58 Non

D Échéancier de réalisation

- 59 1er semestre 2008
- 60 Novembre 2008
- 61 Janvier 2009 – mars 2010
- 62 Novembre 2010 (tranche ferme + tranche conditionnelle 1)
- 63 14 mois
- 64 A partir d'avril 2012
- 65 Septembre – octobre 2012

E Coûts

- 66 2,5 million EUR
- 67 Tranche ferme + tranche conditionnelle 1: 10,2 million EUR TTC ;
tranche conditionnelle 2 : 5,1 million EUR TTC ; Total: 15,3 million EUR
TTC.
- 68 1 million EUR TTC au total
- 69 1,394 million EUR TTC
- 70 20,194 million EUR TTC

F Publications



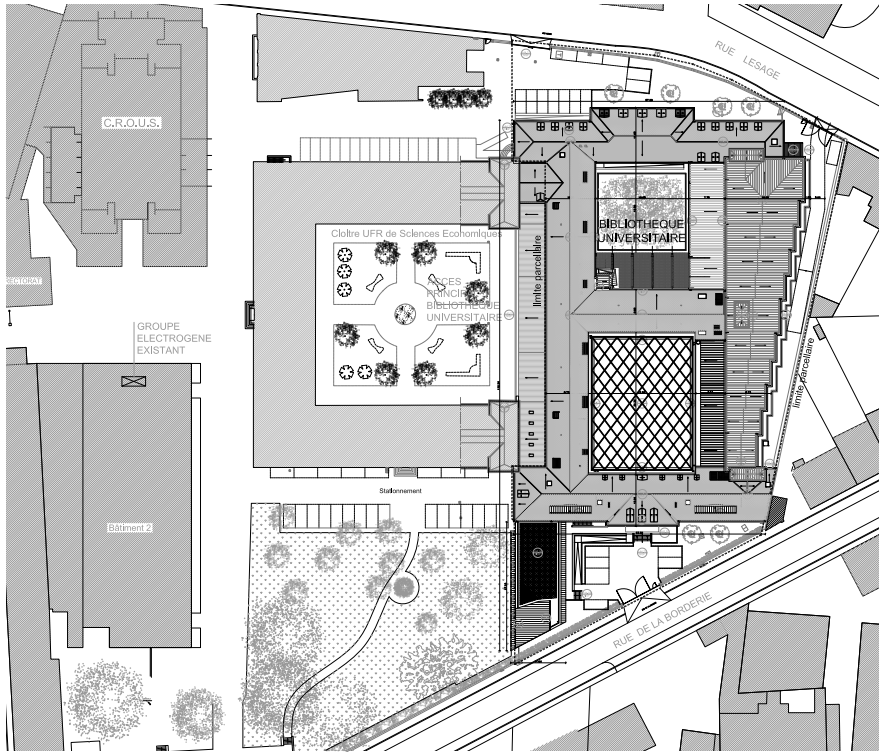
Façade



Vue sur la salle de lecture

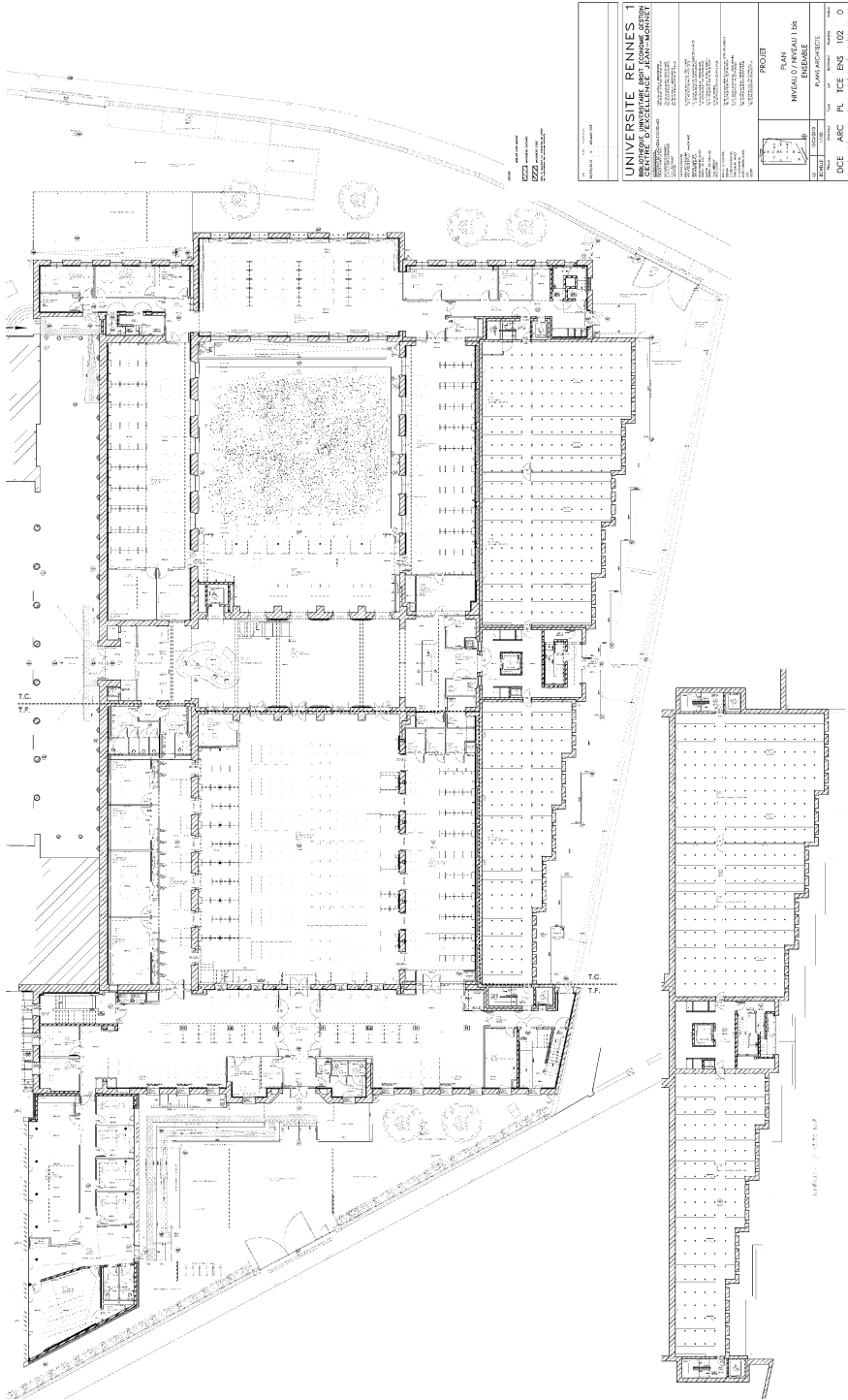


Vue du hall et de la chapelle



Plan de masse

Bibliothèque de Droit, Economie, Gestion. Rennes, La France



UNIVERSITE RENNES 1 CENTRE DE RECHERCHE JEAN MONNET	
PROJET : PLAN Niveau 0 et 1 bis	
ARCHITECTE : LIBER ARCHITECTURE	
DATE : 2012	
DCE : ARC PR ICE BIS 102 0	

Niveaux 0 et 1 bis

Universitäts- und Landesbibliothek Düsseldorf: Fachbibliothek Medizin in der O.A.S.E. Düsseldorf, Germany

A General information about your library

a Name and address

- 1 University Library: Special Library Medicine
- 2 Universitäts- und Landesbibliothek Düsseldorf: Fachbibliothek Medizin
in der O.A.S.E. /
Heinrich-Heine-Universität Düsseldorf
- 3 Universitätsklinikum Düsseldorf, O.A.S.E., Universitäts- und
Landesbibliothek: Fachbibliothek Medizin, Moorenstraße 5,
Gebäude 16.61, 40225 Düsseldorf
- 4 T 49 221 811 2030, F 49 221 811 3054,
E sekretariat@ub.uni-duesseldorf.de
- 5 Mrs. Dr. Irmgard Siebert
- 6 Mrs. Dr. Irmgard Siebert
Mrs. Ulrike Brunenberg

b Population served

- 7 27 000
- 8 Medicine: 3 200
- 9
- 10

c Conditions of the library (before the new project)

- 11 2 646 m²
- 12 60
- 13 450 000 books and periodicals
- 14 50 000
- 15 400 000
- 16
- 17 55 hours per week, 250 days per year

B The new building: aims and features

a Architect(s)

- 18 HPP Hentrich-Petschnigg & Partner GmbH + Co. KG
- 19 Volker Weuthen, www.hpp.com, interior design Silvia Pappa Innenarchitekten and UKW Innenarchitekten, www.silvia-pappa.de, www.ukw-innenarchitekten.de
- 20 new building

b Aims of the new building

- 21 › The old Special Library of Medicine had to be closed because of decrepitude.
 - › Create a new innovative library corresponding with the idea of libraries as well-designed learning spaces and learning grids.
 - › Usefull and enlarged technical support for the students.
 - › Create a joint-venture of a modern library and a learning-center of the Faculty of Medicine.
 - › Extend the number of reader seats and study-rooms for students.
 - › Extension of opening hours to the public:
Opening hours of the new library:
Monday to Friday 8.00 a. m. – 12.00 p. m.
Saturday to Sunday: 9.00 a. m. – 12.00 p. m.

c Special Features

- 22 › Located on campus, in the middle of the whole campus, between university area and clinical area,

- › near by the “Mensa”,
 - › near by parking spaces.
- 23** › Rectangular plan, 22 × 22 m, 38 m high, like a tower,
- › white mosaic of glass, green high windows,
 - › cast-in-place concrete
 - › materials selected to reduce energy costs (according to the german instructions “EnEV 2009”), for example windows
 - › disabled access

C Technical information about the new building

a Floor area (24 to 35)

24 5 055 m²

Divided into

25 3 033 m²:

- › reading rooms with holdings of books and periodicals
- › readers seats in reading rooms and study-rooms
- › circulation and information desks
- › cafeteria
- › conference rooms

Special rooms (26, 27, 28, 29)

26 0

27 72 m²

28 0

29 250 m²

Special activities (30, 31, 32)

30 0

31 123 m²

32 220 m²

33 270 m²

34 0

35 2 staircases, 2 lifts, 8 technical rooms, 11 toilets

36 8 levels, 2 mezzanines

37 476 without staff

Divided into

38 0

39 44

40 132

41 300

b Total potential capacity of shelving (linear metres or volumes)

42 43 000 volumes

Including

43 43 000 volumes

44 0

45 0

46

47

48 4 plus security in the evening

c Mechanical features

49 ventilation

50 concrete core activation

51 Energy-saving and LED

52 T-sonic-floors (Toucant-t), acoustic panels on the walls (Ecophon) and on the tables (buzzy.com)

53 2 lifts

54 —

55 Library: 3M
Building: Bosch

56 Siemens

57

58 Selfcheck and Sorter: 3M

D Schedule of the building process (dates)

- 59 2008
- 60 —
- 61 2009
- 62 November 2009
- 63 November 2009 – April 2011
- 64 April 2011 – August 2011
- 65 24th of November 2011

E Costs (including taxes)

- 66 0
- 67 13 million EUR
- 68 1.5 million EUR
- 69
- 70

F Publications

Stefanie Ritz-Timme, Ulrike Brunenberg-Piel, Volker Weuthen, Ulrich Decking, Alfons Hugger, Matthias Schneider: O.A.S.E.: Raum und Symbol für eine neue Lern- und Lehrkultur an der Medizinischen Fakultät. in: Neues aus Wissenschaft und Lehre: Heinrich-Heine-Universität Düsseldorf 2010. Düsseldorf: dup, 2010, S. 51–62.

Ulrike Brunenberg-Piel, Klaus Ulrich Werner: Die neue Fachbibliothek Medizin der Universitäts- und Landesbibliothek Düsseldorf in der O.A.S.E., in: ABI-Technik, H.1.2012, erscheint in Kürze

Santifaller, Enrico: Leuchtturm: Medizinische Fachbibliothek O.A.S.E., Düsseldorf. In: Deutsche BauZeitschrift. Jg. 60, H. 02, 2012.

Online-Ausgabe: www.dbz.de/aktuelle_ausgabe_13767.html (13.02.2012)

Santifaller, Enrico: Tragende Haut: Fassadenkonstruktion der O.A.S.E., Düsseldorf. In: Deutsche BauZeitschrift, Jg. 60, H. 02, 2012, S. 68–73.



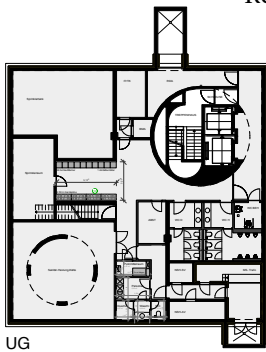
The Library Exterior HPP Architekten, Photographer: Ralph Richter



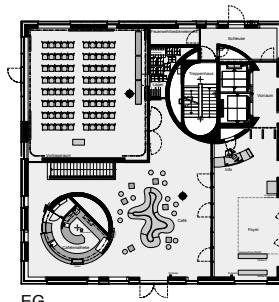
Learning spaces in the Library at level 07 ULB Düsseldorf



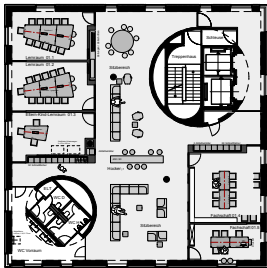
Recreation zone at level 00: The Cafeteria ULB Düsseldorf



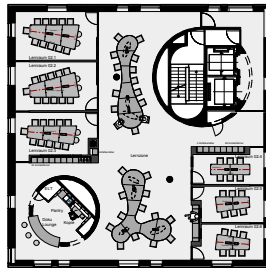
UG



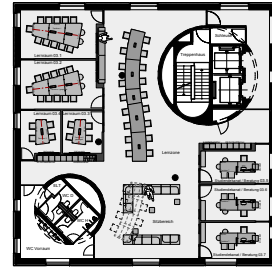
EG



LEV 01



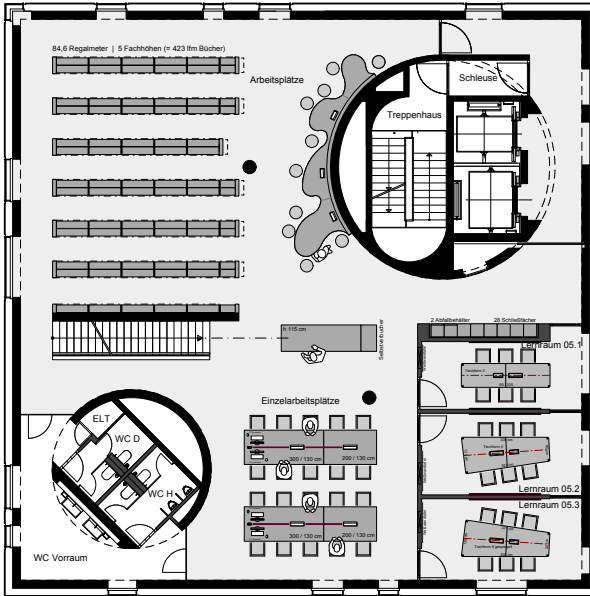
LEV 02



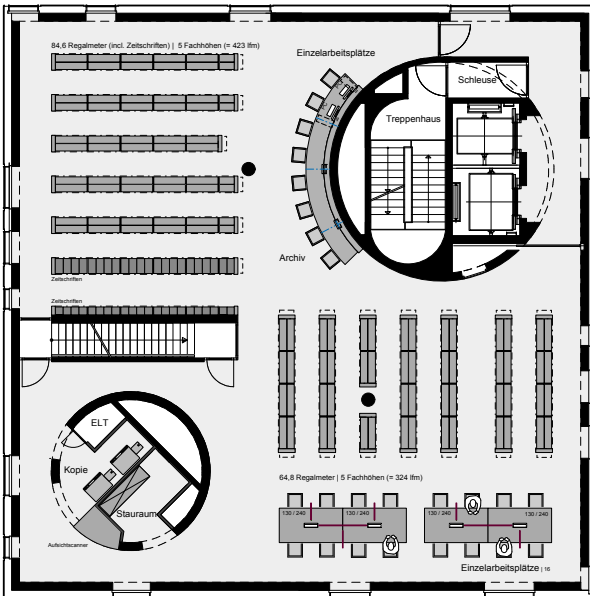
LEV 03

Plans levels U1-03 HPP Architekten & ARGE UKW Innenarchitekten Krefeld /
Silvia Pappa Innenarchitekten Düsseldorf

Universitäts- und Landesbibliothek Düsseldorf: Fachbibliothek Medizin in der O.A.S.E. Düsseldorf, Germany



Plan level 05: Library HPP Architekten & ARGE UKW Innenarchitekten Krefeld / Silvia Pappa Innenarchitekten Düsseldorf



Plan level 06: Library HPP Architekten & ARGE UKW Innenarchitekten Krefeld / Silvia Pappa Innenarchitekten Düsseldorf

Universitätsbibliothek Freiburg. Freiburg, Germany

A Allgemeine Information über die Bibliothek

a Name und Adresse

- 1 Wissenschaftliche Bibliothek (Universitätsbibliothek)
- 2 Universitätsbibliothek Freiburg /
Albert-Ludwigs-Universität Freiburg
- 3 Rempartstr. 10-16, D-79098 Freiburg
- 4 T +49 761 203 3900, F +49 761 203 3987,
E direktion@ub.uni-freiburg.de
- 5 Dr. Antje Kellersohn
- 6 Ato Ruppert

b Publikum

- 7 37 000
- 8 23 000
- 9 0
- 10 6 000

c Situation der Bibliothek (vor dem neuen Projekt)

- 11 20 811 m² (HNF, Altbau von 1978)
- 12 1 020
- 13 3 410 000 Bände
- 14 410 000 Bände
- 15 3 000 000 Bände

- 16 150
- 17 Mo–Fr 8–22 Uhr, 8–13 Uhr (75 Stunden / Woche)

B Das neue Gebäude: Ziele und Eigenschaften

a Architekt(en)

- 18 Degelo Architekten, Basel, www.degelo.net
- 19 Herr Heinrich Degelo
- 20 Renovation

b Ziele des neuen Gebäudes

- 21 Die Universitätsbibliothek Freiburg wurde 1978 in zentraler Lage errichtet. Die nach 25 Jahren Betrieb abgängige Haustechnik sowie gravierende bauliche Mängel und der hohe Energieverbrauch machten eine grundlegende Sanierung notwendig. Der Entwurf des Basler Architekten Heinrich Degelo wurde im Realisierungswettbewerb 2006 mit dem ersten Preis ausgezeichnet. Der Gebäudebestand wird in einen kristallinen Baukörper überführt, die inneren Funktionen werden neu geordnet. Der künftige Energieverbrauch wird um mehr als 50% reduziert. Die Zahl der Nutzerarbeitsplätze wird deutlich erhöht und es soll ein differenziertes Angebot an Arbeitsmöglichkeiten für Studium und Lehre geschaffen werden. Das neue Gebäude ist von Anfang an auf einen umfassenden 24/7-Service und für eine RFID-gestützte Selbstverbuchung mit entsprechender Transportlogistik ausgelegt. Der Anteil an Freihandbestand wird durch die Umnutzung einer Tiefgarage signifikant erhöht. Außerdem wird eine große dezentrale Bibliothek der Universität in den Neubau integriert.

Während der Großteil des Bibliotheksbetriebes in 2 Auslagerungsgebäuden untergebracht werden konnte, müssen die unterirdischen Magazine (Untergeschosse 2 und 3) während der gesamten Bauzeit im Sanierungsgebäude verbleiben und unter der Baustelle bedient werden.

c Spezielle Merkmale

- 22 Die Universitätsbibliothek befindet sich im Zentrum der Stadt Freiburg in unmittelbarer Nachbarschaft zu den Geistes- und Kulturwissenschaftlichen Fakultät der Universität.

Die Stadt Freiburg plant, den an die Universitätsbibliothek angrenzenden Rotteckring zur autofreien Zone umzuwandeln und den

benachbarten Platz der Alten Synagoge in einen zentralen Begegnungsraum zwischen Universität und Freiburger Öffentlichkeit umzugestalten.

- 23** Degelos Entwurf stellt eine Transformation des stark zergliederten Altbaus in einen „kristallinen Baukörper“ dar: Die Geschoßdecken werden in der Sprache des Architekten wie bei einem „geschliffenen Diamanten“ teilweise zurückgeschnitten und der Neubau bekommt eine völlig neue Form. Die alte Betonfassade wird komplett entfernt und durch eine neue Fassadenhaut aus Edelstahl und Glas ersetzt. Durchschnittlich 50% der gesamten Fassadenfläche wird aus Wärmeschutzglas ausgebildet. Der Neubau symbolisiert auf diese Weise die Transparenz des Wissenschaftlichen Arbeitens im Sinne des „open scholarship“.

C Technische Information über das neue Gebäude

a Gesamtfläche (25 bis 36)

24 39 400 m² (NGF)

Unterteilt in

- 25** Alle Bereiche, außer geschlossene Magazine und Bibliotheksverwaltung
Spezielle Räume (27, 28, 29, 30)
- 26** Medienzentrum mit Arbeitsplätzen zur Mediennutzung, -erstellung und -bearbeitung, Audio- und Videostudios, speziell ausgestatteten Schulungsräumen und einer Cross-Media-Redaktion mit Sendestudios für das Campus-TV und Uni-Radio
- 27** 1 PC-Seminarraum und 1 Lern-Pool, PC-gestützte Präsentationplätze im Parlatorium
- 28** Sonderlesesaal für historische und besonders schützenswerte Bestände
- 29** 6 Seminar- und Schulungsräume, 1 Raum für Videokonferenzen
Räume für andere Aktivitäten (31, 32, 33)
- 30** 3 ausgewiesene Zonen im Parlatorium und im Veranstaltungsraum
- 31** kombinierter Ausstellungs- und Veranstaltungsraum mit 200 Sitzplätzen
- 32** Das Café im EG ist integraler Bestandteil der Bibliothekskonzeption (Stichwort Lernlounge), im Sommer ist eine Außenbewirtung auf dem Vorplatz vorgesehen.

- 33 Anstelle von traditionellen Einzel- oder Gruppenbüroräumen wird überwiegend eine offene Bürolandschaft geplant.
- 34 2 Magazingeschosse geschlossen (UG 2 und UG 3)
- 35
- 36 9 Stockwerke, davon 3 Untergeschosse, 7 öffentliche Stockwerke
- 37 1 700 (zuzüglich Sitzplätze im Veranstaltungsraum, in den Seminarräumen, Café und Medienzentrum)

Unterteilt in

- 38 0
- 39 0
- 40 0
- 41 0

b Gesamtkapazität Stellfläche (Laufmeter oder Bände)

- 42 4 430 000 Bände
- 43 230 000 Bände im Lesesaal und 700 000 im Freihandmagazin
- 44 3 500 000 Bände (im Endausbau unter Nachverdichtung nach Bezug)
- 45 0
- 46 41 000
- 47 0
- 48 160

c Mechanische Eigenschaften

- 49 Mechanische Lüftung mit Vortemperierung des Luftstroms über Quellwasser (Kühlung) und Dampf (Heizung)
- 50 Anschluss an zentrale Dampfleitung
- 51 in Planung
- 52 in Planung
- 53 6 Personenaufzüge und 1 Lastenaufzug
- 54 2 Linearaufzüge (Gilgen) über alle Stockwerke

55 RFID-Basiert

56

57 Kat 7

58

D Zeitplan

59 2003

60 2006

61

62 10/2008

63 2008–2013

64 2013

65 Ende 2013

E Kosten

66 0

67 44 million EUR

68 0

69 0

70 0

F Veröffentlichungen

Kellersohn, Antje, Ruppert, Hans-Adolf: Neben und unter der Baustelle...
24/7 Service auf dem Weg zur UB Freiburg 2013 In: Hauke, Petra; Werner,
Klaus Ulrich (Hrsg.): Bibliotheken heute! Best Practice in Planung, Bau und
Ausstattung Bad Honnef: Bock + Her

Kellersohn, Antje: Die neue Universitätsbibliothek Freiburg. Ein Bericht
von der Baustelle BIT online: Zeitschrift für Bibliothek, Information
und Technologie mit aktueller Internet-Präsenz, 2010; 13 (4): 430–433.
(download: <http://www.b-i-t-online.de>)

Kellersohn, Antje, Sühl-Strohmenger, Wilfried: Ein geschliffener Diamant für Freiburgs Innenstadt. Sanierung der Universitätsbibliothek bis 2013 – und der Betrieb läuft weiter. BuB: Forum Bibliothek und Information, 2009; 61 (10): 699–703. (download:

Kellersohn, Antje, Sühl-Strohmenger, Wilfried: Die 24-Stunden-Bibliothek an 7 Tagen in der Woche. Jetzt auch in der UB Freiburg BIT online: Zeitschrift für Bibliothek, Information und Technologie mit aktueller Internet-Präsenz, 2009; 12 (2): 174–175.

Karl-Heinz Bühler: Sanierung der Universitätsbibliothek. Vom Sanierungsfall zur Bibliothek des 21. Jahrhunderts im Herzen der Stadt Freiburg im Breisgau, in: Albert Raffelt (Hrsg.): Die Bibliothek von außen und von innen. Aspekte Freiburger Bibliotheks

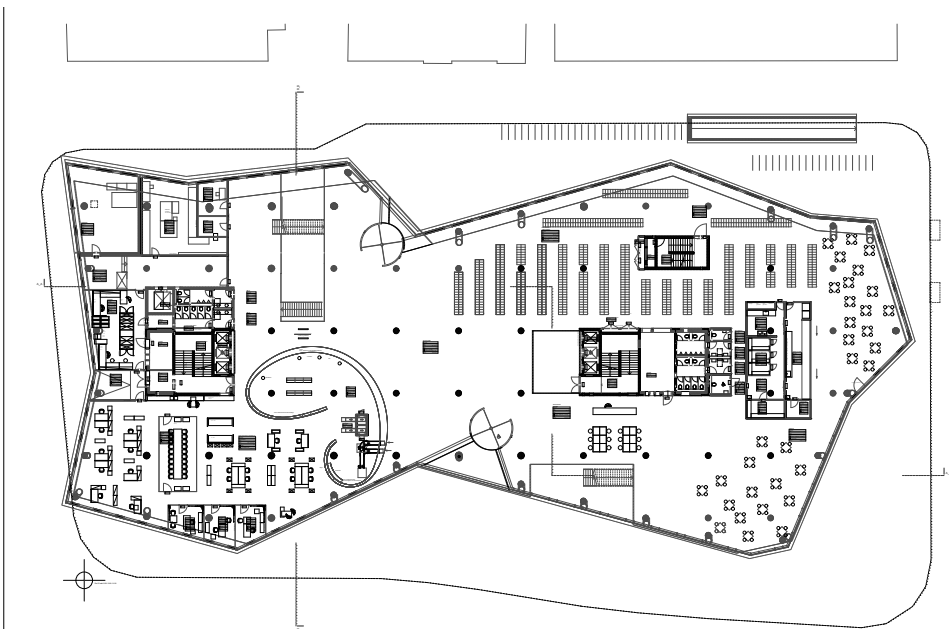
Kleilein, Doris: Umbau und Modernisierung der Universitätsbibliothek Freiburg. In: Bauwelt, 2006, Heft 21, S. 18–26.



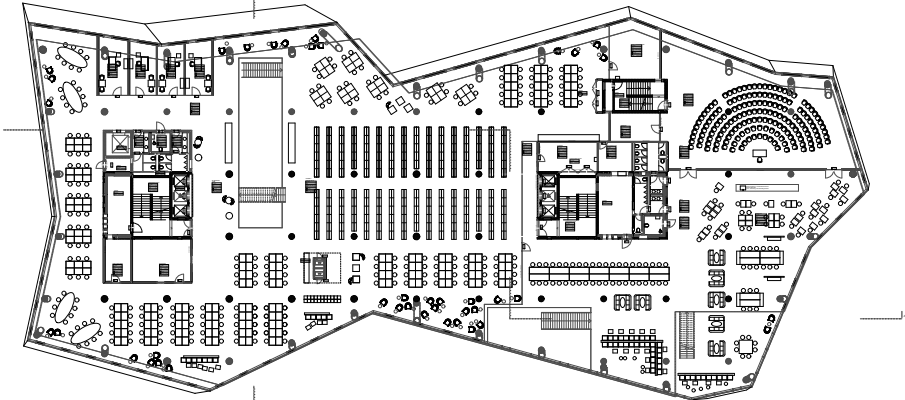
Visualisierung der neuen Universitätsbibliothek Freiburg
Quelle: Degelo Architekten, Basel; Visualisierung: Architron



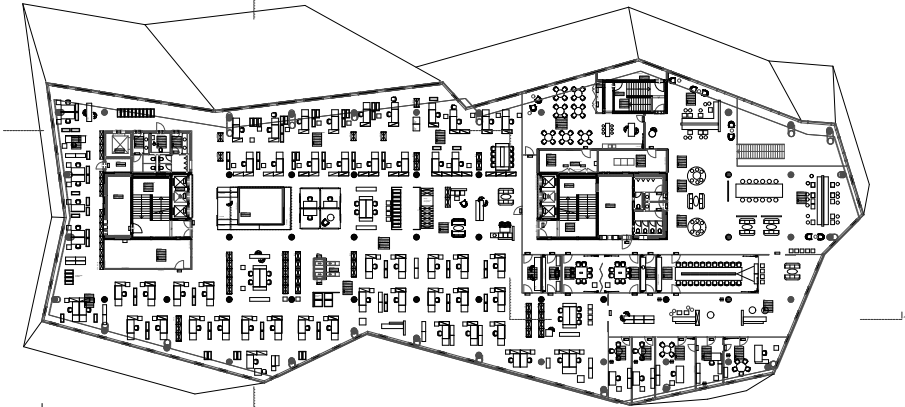
Visualisierung der neuen Universitätsbibliothek Freiburg
 Quelle: Degelo Architekten, Basel; Visualisierung: Architron



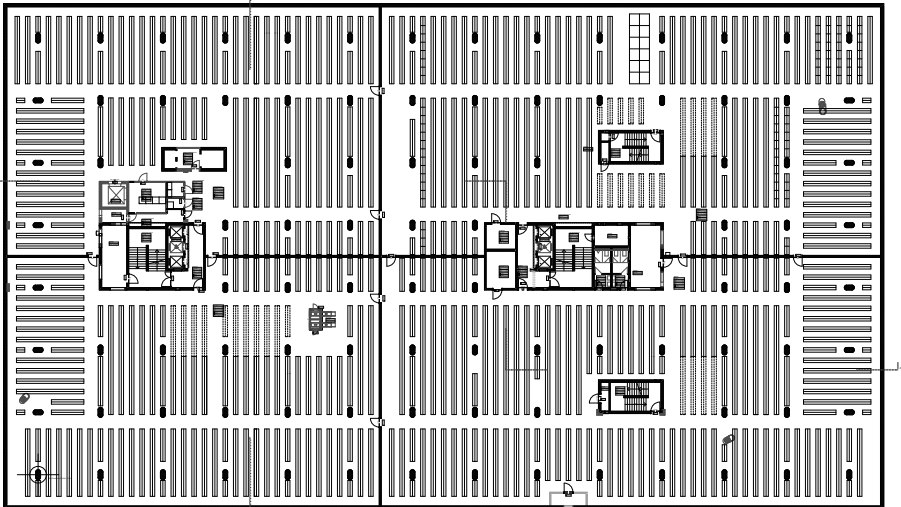
Erdgeschoß mit zentraler Auskunftstheke, Medienrückgabe, Café und Garderobe
 Entwurf: Degelo Architekten, Basel; © Bene, UB Freiburg u. UBA Freiburg



1. Obergeschoß mit Lesesaalbereich, Parlatorium und Veranstaltungsraum



5. Obergeschoß (Bibliotheksverwaltung)



2. Untergeschoß mit geschlossenem Magazin

Entwurf: Degelo Architekten, Basel; © Bene, UB Freiburg u. UBA Freiburg

John Paul II Library. Maynooth, Ireland

A General information about your library

a Name and address

- 1 University library
- 2 John Paul II Library /
National University of Ireland, Maynooth
- 3 Maynooth, Co Kildare, IRELAND
- 4
- 5 Cathal McCauley
- 6 Cathal McCauley

b Population served

- 7 10 000
- 8 7 000
- 9 2 000
- 10 600

c Conditions of the library (before the new project)

- 11 4 000 m²
- 12 680
- 13 330 000 volumes
- 14 320 000 volumes
- 15 10 000 volumes
- 16 49

17 72 hours per week during academic year

B The new building: aims and features

a Architect(s)

- 18 Scott Tallon Walker
- 19 St. John Handley
- 20 extension

b Aims of the new building

- 21 Address need for greater stock and seating capacity while also meet demand for 24/7 capability, ubiquitous wifi, more end-user power supply, teaching rooms and a range of student space from the social to the silent.

c Special Features

- 22 Located in Maynooth Ireland's only University town, the campus is divided by a road into north and south with the library in the centre acting as a nexus. The campus hosts two institutions – National University of Ireland, Maynooth and St. Patrick's College Maynooth and the library serves both.
- 23 The extension is based on a precast concrete grid of 6.5 metres. There is a glass twin wall system on the upper floors. The building complies with all access and safety regulations including for example the provision for a mothering room. The building has a range of green features including water attenuation tanks, seeded roof, smart lighting. A virtual fly through can be viewed at: <http://www.youtube.com/watch?v=AKaiUGm6m8U>

C Technical information about the new building

a Floor area (24 to 35)

- 24 The total library will have a floor area of 10 200 m² of which 6 200 is the new extension

Divided into

- 25 7 950 m²

Special rooms (26, 27, 28, 29)

26 none dedicated

27 160 m² dedicated but provided at multiple locations throughout the building

28 190 m²

29 211 m²

Special activities (30, 31, 32)

30 84.5 m²

31 none

32 116 m²

33 1 400 m²

34 90 m²

35 —

36 3 levels, all accessible by registered users, only the front of the ground floor will be totally open to the public

37 1 500

Divided into

38 no dedicated seating

39 50

40 262

41 1 188

b Total potential capacity of shelving (linear metres or volumes)

42 450 000 volumes

Including

43 356 000 volumes

44 17 000 volumes

45 72 000 volumes (not included in 43 or 44)

46 5 000 volumes

47 N/A

48 2 additional staff onto existing staff of FTE in this library of 45.

c Mechanical features

49 natural using twin wall system

50 natural using twin wall system

51 smart lighting throughout

52 use of materials and coffers in precast concrete

53 2 lifts

54 no

55 electro magnetic tattle tape based

56 yes

57 wired to deliver all fixed points with 1GB, wifi throughout

58

D Schedule of the building process (dates)

59 commenced 2006

60 2008

61 2010

62 December 2010

63 due to complete autumn 2012

64 summer 2012

65 October/December 2012

E Costs (including taxes)

66 N/A

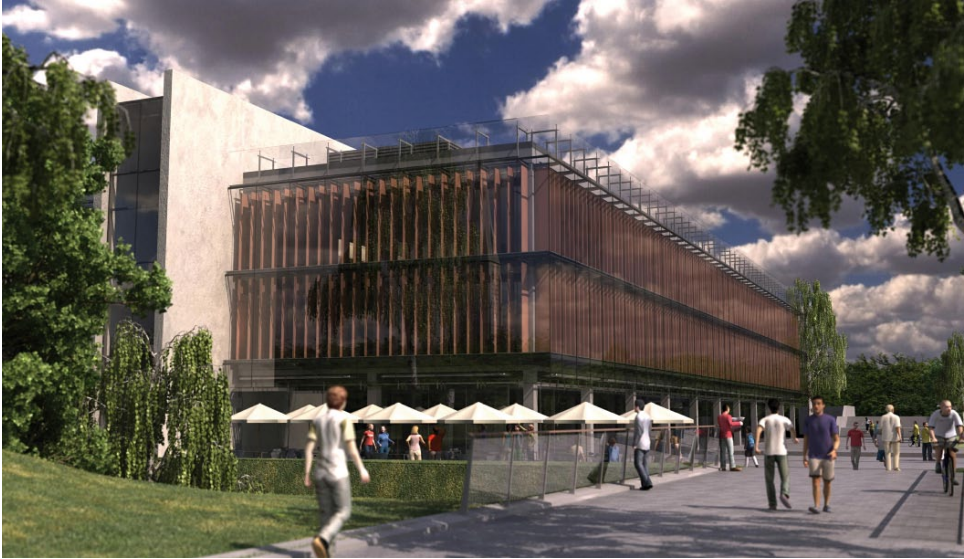
67 20 million EUR

68 N/A

69 N/A

70 N/A

F Publications

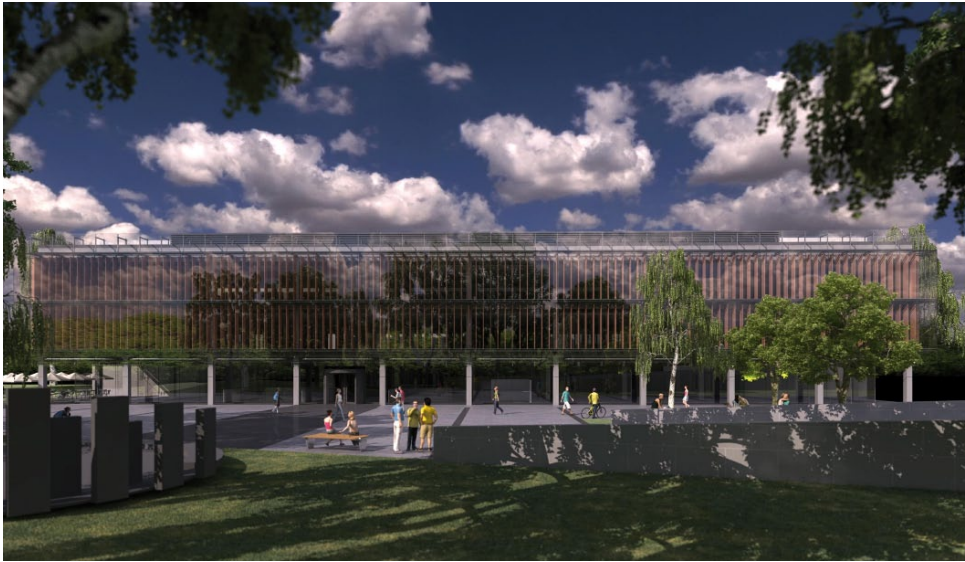


Perspective View of Plaza and Proposed Library Looking North

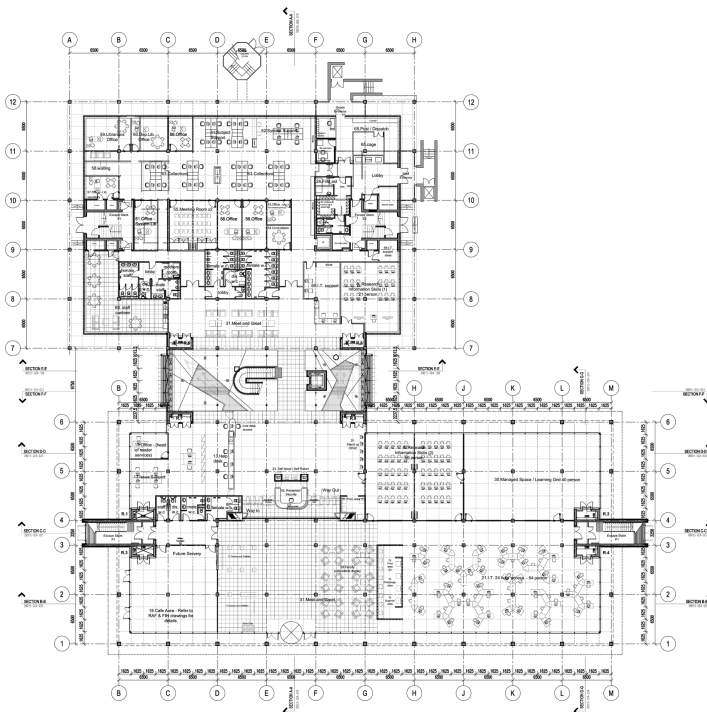


Perspective View of Ramp and Plaza Looking South

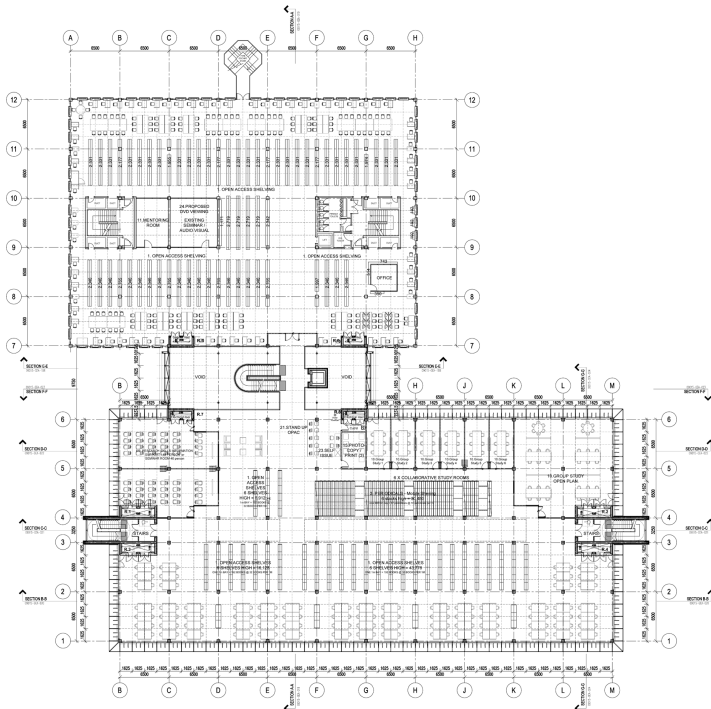
John Paul II Library. Maynooth, Ireland



Perspective View of Plaza and Proposed Library Looking West



Ground Floor Plan Scott Tallon Walker Architects



First Floor Plan Scott Tallon Walker Architects



East and North Elevation Scott Tallon Walker Architects

John Paul II Library. Maynooth, Ireland



West and South Elevation Scott Tallon Walker Architects

Information Expertise Centre. Eindhoven, Netherlands

A General information about your library

a Name and address

- 1 University library
- 2 Information Expertise Centre /
Eindhoven University of Technology
- 3 Den Dolech 2, 6512 AZ Eindhoven, The Netherlands
- 4 T 0031 402 472 360, F 0031 402 447 015
E H.W.J.Deurenberg@tue.nl
- 5 Mrs J. C. M. Figdor msc
- 6 Mrs H. W. J. Deurenberg msc

b Population served

- 7 14 000
- 8 7 655
- 9 0
- 10 3 274

c Conditions of the library (before the new project)

- 11 5 842 m²
- 12 408
- 13 312 197 books, 40 000 e-books, 429 printed journals, 15 040 e-journals
- 14 171 474 books
- 15 140 723 books

- 16 56
- 17 86 hours per week 355 days per year

B The new building: aims and features

a Architect(s)

- 18 Ector Hoogstad Architecten, www.ectorhoogstad.com
- 19 Joost Ector
- 20 renovation

b Aims of the new building

- 21 To create a building with facilities for the academic community of the TUE especially for students and for the Department of Mathematics and Computer Science. The old W-Hal, the former technology hall of the faculty of Mechanical Engineering (cultural heritage) is renovated and extended to the new building called "MetaForum".

In the lower part of the building are the following facilities grouped together: University Library, Student Information Center, Notebook Service Center, Dictations Shop, Reproshop, Facilities for Honors Program (TUE program for excellent students) and the Common Room (facility for foreign students). There are various types of seats for visitors (study, relax, group rooms). The ground floor will offer 8 lecture rooms.

On the top is a separate building element for the Department of Mathematics and Computer Science.

c Special Features

- 22 Location of the building: Campus of Eindhoven, University of Technology close to city centre. There is excellent access to the university by train and busses.
- 23 The unique spatial qualities of the existing W-Hall, such as the pleasant incidence of light through the "chessboard roof", will come into their own even more following the transformation.

Ingeniously concealed technology leaves the transparent and airy character of the former W-Hall building intact. As usual throughout the campus, the first floor forms the main traffic level, with corridors connecting it with the surrounding buildings. From this level, it will be possible to make a spectacular descent into the library below, which is housed partly in a new basement (under the existing building!).

An adventurous staircase leads up from the first floor to the (newly built) faculty of Mathematics & Computer Science, which will be raised above the hall by means of twenty slender columns. The faculty programme is compressed here into a very compact building, which is transected by a small but unique atrium to provide sufficient daylight. What appears to be a fairly closed facade creates a dramatic contrast between the fragility of the substructure and the massive metal “block” on top.

C Technical information about the new building

a Floor area (24 to 35)

24 26 000 m²

Divided into

25 4 500 m²

Special rooms (26, 27, 28, 29)

26 115 m², room with 12 cabins and a central desk

27 no special rooms but special computer desks, bring your own laptop, wireless access is provided

28 are digital available

29 668 m², rooms ranging from 65 to 140 m²

Special activities (30, 31, 32)

30 110 m² and 280 m² on the first floor, here is a special “computer floor” constructed for easy access to electrical power and data access points

31 no

32 116 m² canteen for food and (soft) drinks, lunches are served

33 717 m²

34 6 500 m shelves in another building

35 350 m² corridors, 150 m² toilets, 420 m² technical rooms

36 the library is situated on 3 levels

37 1 000

Divided into

- 38 12
- 39 600 in the library
- 40 8
- 41 about 400

b Total potential capacity of shelving (linear metres or volumes)

- 42 4 300 open shelving and 6 500 closed shelving

Including

- 43 4 300
- 44 6 500
- 45 no
- 46 6
- 47 no
- 48 49

c Mechanical features

- 49 Balanced mechanical supply and return of air. If necessary, the air is cooled from the WKO of the TU/e. (WKO = warmte/koude opslag = heat and cold storage).
- 50 The substructure/downstairs/ground floor is heated with radiant heat. The superstructure/upper floor(s) are heated with forced hot air.
- 51 Individually adjustable lighting that is also day light dependent. Lights are turned on by hand. Lights will turn off when there is no more movement in the room. (motion sensed)
- 52 Drop ceilings with absorption defined by use (prevention of echoing) and inner walls with acoustic insulation. (i.e. Drop ceilings engineered to absorb echoing, and inner walls with acoustic insulation.)
- 53 Energy efficient elevators (5 units), operable from the security booth
- 54 no special systems
- 55 RFID
- 56 LON-/GBS, a campus system

57 Cables: CAT 6A (for the department of Mathematics and Computer Science) and wireless with access points for students.

58

D Schedule of the building process (dates)

59 planning started in September 2007, the construction in May 2010

60 In April–July 2007

61 July 2007 – Jan 2010

62 May 2010

63 May 2010 – July 2012

64 July–August 2012

65 planned in Septembre–Novembre 2012

E Costs (including taxes)

66 2.5 million EUR incl taxes

67 43 million EUR incl taxes

68 1.5 million EUR incl taxes

69 6.6 million EUR incl taxed

70 about 55 million EUR incl taxes

F Publications



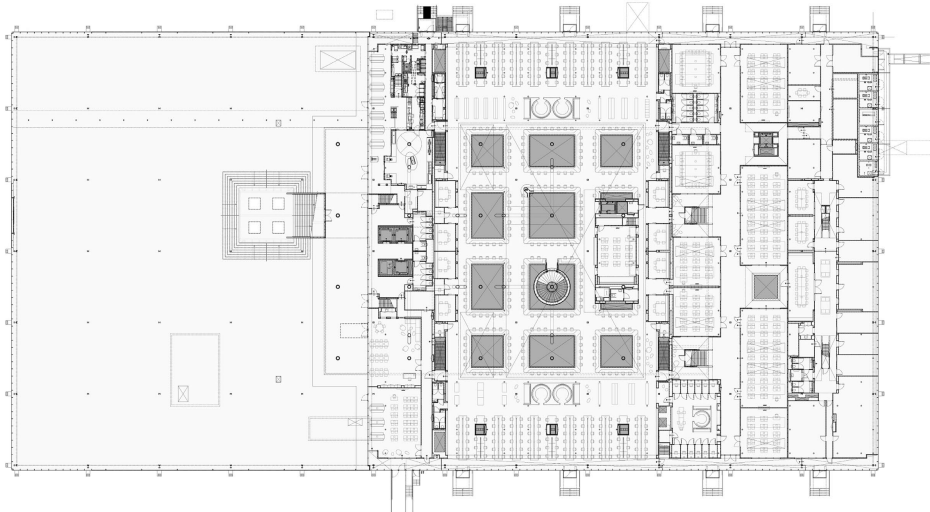
3D-Image – Exterior Architect Ector Hoogstad



3D-Image Interior Architect Ector Hoogstad

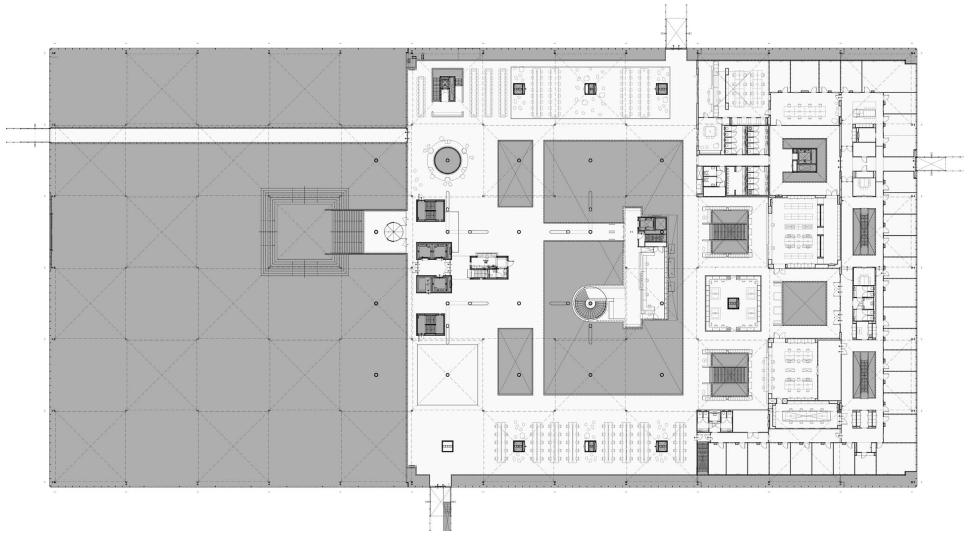


3D-Image Interior Architect Ector Hoogstad



Plan – Ground Floor Architect Ector Hoogstad

Information Expertise Centre. Eindhoven, Netherlands



Plan First Floor Architect Ector Hoogstad



3d-Section Architect Ector Hoogstad

Tilburg University Library.

Tilburg, Netherlands

A General information about your library

a Name and address

- 1 University library
- 2 Tilburg University Library /
Tilburg University
- 3 Warandelaan 2, 5037 AB Tilburg, The Netherlands
- 4 T +31 (0)13 466 3111(Mo–Fri): Library Service Desk
T +31 (0)13 466 2121 (Mo–Fri): Secretary
E see nr. 6 Mrs. Ine Appels
- 5 Mr. ir. M. J. (Marc) van den Berg
- 6 Mrs. C. A. G. M. (Ine) Appels
Head of Department: Communication and Secretariat.
E-mail: c.a.g.m.appels@uvt.nl

b Population served

- 7 Active borrowers: 32 973, all registered borrowers: 53 441
- 8 Including part time students: 13 153 students, 1 050 international students, 354 PhD students
- 9 See nr. 8
- 10 About 2 000

c Conditions of the library (before the new project)

- 11 880 m² including closed stacks, closed stack alone 105 m²
- 12 948

- 13 see part C.b) 42. – The number of volumes in the library before the renovation is unknown, but it was much higher than the current numbers. The collection underwent thinning.
- 14 see part C.b) 43. – The number of volumes in the library before the renovation is unknown, but it was much higher than the current numbers. The collection underwent thinning.
- 15 see part C.b) 44. – The number of volumes in the library before the renovation is unknown, but it was much higher than the current numbers. The collection underwent thinning.
- 16 Total 54.9 FTE (not all of them are working in the library building)
- 17 Monday–Friday: 08:00–23:00hrs (about 3 900hours per year) Saturdays–Sunday: 10:00–18:00 hrs (about 832 per year) Average 361 days per year. Total hours of opening: about: 4 732.

B The new building: aims and features

a Architect(s)

- 18 Merkx+Girod Architects, Amsterdam, The Netherlands, www.merkx-girod.nl
- 19
- 20 renovation

b Aims of the new building

- 21 A new layout with new facilities in relation to educational support. More library materials in closed stacks. An open and inviting building adapted to the present: an attractive place to study and work. Adapted to rapidly changing requirements, allowing flexibility in the establishment, easily redesign, is the goal.
Specialty rooms for students and staff members to experience new AV-materials etc, a special open workspace for staff members.
Bright and light.

c Special Features

- 22 The library is located in the center of the campus.
- 23 › rectangular plan
› 3 levels, entrance on the 1st floor

- › the floors are enclosed by concrete panels with a regular series of windows.
- › blinds attached to the facade

C Technical information about the new building

a Floor area (24 to 35)

24 880 m² including closed stacks, closed stack alone 105 m²

Divided into

25 not specified

Special rooms (26, 27, 28, 29)

26 A viewing and editing room on level 1.

27 On all levels: open access, rooms for groups, special room for individuals.

28 In a specially secured and climate-controlled area are old prints, topographical maps and old manuscripts.

29 Teaching room on level 1.

Special activities (30, 31, 32)

30 2 display cases of glass: on level 0 and 1.

31 1 instruction-room on level 1.

32 1 study cafe on level 1.

33 On all levels: special and open staff areas with pantry and meeting-rooms. Flexible workplaces: employees use a laptop. Note: Not every staff member works in the library building. The secretariat, the communications department etc. are housed elsewhere on campus.

34 Situated on level 0 with 2 entrances. Only accessible by staff.

35 not specified

36 3 levels

37 948 divided into: Silent area: 244 computers (48 with laptop holder), 210 places for group work: 2–8 people, 494 individual study places with computers

Divided into

38 A viewing and editing Room on level 1.

39 see nr. 37

40 1 instruction-room on level 1.

41 see nr. 37

b Total potential capacity of shelving (linear metres or volumes)

42 566 815 volumes

Including

43 115 890 volumes (A journal is counted as 1 title, but may consist of multiple physical copies.)

44 450 925 volumes, elsewhere on campus: about: 373 350 volumes

45 Not specified

46 Not specified

47 see nr. 28

48 Not specified for the library. For the total see nr. 16

c Mechanical features

49 Air Conditioning

50 District heating (Gas)

51 offices, meeting rooms, student area, study cafe: in Es (lux): 450
walking areas, restrooms, closed stacks: in Es (lux): 200
Energy saving. In the offices, meeting rooms, instruction rooms: the lights react to movement. If no one is in this room, the light goes off automatically.

52 Based on the legal requirements, acoustic energy is applied.

Measures have been taken by:

(1) Description of separation:

walls between office rooms / study workplaces, walls between the office / workplace study and meeting space, walls between meeting rooms, walls with a door between the office room / study and work progress, walls with a door between meeting room and hallway.

(2) Type of rooms:

offices and office gardens, student workstations, instruction-en

presentation rooms, general circulation areas, bathrooms, study café / pantry for employees, print/repro- and computer rooms, technical areas.

- 53 1 outside the building for persons and materials (to reach the entrance on level 1)
2 inside the building for persons/materials, 1 for materials (persons too), a small one only for books etc (between level 0 and 1).

54

55 Autocheck Systems Nederland

56

- 57 10 Gb/s Internet connection via SURFnet.
In the workplace, 100 MB/s (occasionally 1 GB/s).
Cabling Type in the workplace FTP.
Single mode fiber between buildings.
Multimode fiber in buildings.

58

D Schedule of the building process (dates)

59

60

61

- 62 2009–2010: Renovation of the building started in June 2009. The 1st phase lasted from June to October 2009: west side of the building. The 2nd phase lasted from November 2009–February 2010: East side of the building. Into full service: May 2010.

63

64

- 65 In full service: May 2010.

E Costs (including taxes)

66

67

68

F Publications



Library Building



Library Winterscene



Service Desk – Level 1



Level 2 – Study Places



Stairs between Level 1 and 2

Centrum Informacji Naukowej i Biblioteka Akademicka (CINiBA), The Scientific Information Centre and Academic Library. Katowice, Poland

A General information about your library

a Name and address

- 1 University library
- 2 Centrum Informacji Naukowej i Biblioteka Akademicka (CINiBA), The Scientific Information Centre and Academic Library (Polish acronym: CINiBA) /
Joint library of the University of Silesia in Katowice and the University of Economics in Katowice
- 3 Bankowa St.11a St., 40-007 Katowice, Poland
- 4 T +4832 786 50 50, E info@ciniba.edu.pl
- 5 Professor PhDr. Dariusz Pawelec
- 6 Jadwiga Witek

b Population served

- 7 33 600 (Library of the University of Silesia) + 12 100 (The Library of the University of Economics in Katowice) + region
- 8 22 360 (Library of the University of Silesia) + 8/9. 11 100 (The Library of the University of Economics in Katowice)
- 9 8 800 (Library of the University of Silesia)
- 10 2 440 (Library of the University of Silesia) + 1 000 (The Library of the University of Economics in Katowice)

c Conditions of the library (before the new project)

- 11 14 835 m² (Library of the University of Silesia) + 1 328 m² (The Library of the University of Economics in Katowice)
- 12 273 (Library of the University of Silesia) + 169 (The Library of the University of Economics in Katowice)
- 13 550 000 volumes (Library of the University of Silesia)+ 341 000 volumes (The Library of the University of Economics in Katowice)
- 14 42 374 volumes (Library of the University of Silesia) + 92600 volumes (The Library of the University of Economics in Katowice)
- 15 510 000 volumes (Library of the University of Silesia) + 269 373 volumes (The Library of the University of Economics in Katowice)
- 16 100 (Library of the University of Silesia) + 47 (The Library of the University of Economics in Katowice)
- 17 54 hours/week, 324 days/year

B The new building: aims and features

a Architect(s)

- 18 HS99, <http://hs99.pl/>
- 19 Dariusz Herman, Piotr Śmierzewski, Wojciech Subalski
- 20 new building

b Aims of the new building

- 21 The Centre will support science-related and culture-producing activities of the region's academic community. Opening of the Centre will have a positive impact on the situation of Silesian students and researchers in terms of improving their access to didactic and scientific materials, books and magazines, as well as to top-quality knowledge about contemporary science. The Centre will combine the traditions of academic libraries with a modern vision of a regional centre of scientific and business information.

In short: more holdings in open stacks, more readers seats, development of the library in the field of research, computer and audiovisual materials, development of training for non-student readers, extension of the opening hours to the public, high quality of services and library and information sources, the only regional science centre,

open for a range of expectations in terms of science, culture, education and knowledge. The new facility of the Scientific Information Centre and Academic Library is designed to store approx. 1.8 million book volumes. After the opening, it will store approx. 800 thousand book volumes.

c Special Features

- 22** The Centre will be situated in the centre of Katowice, on Bankowa street, in direct neighbourhood of already-existing facilities of the main campus of the University of Silesia and University of Economics. Location in the city centre ensures a convenient access to the Centre using the existing road network, as well as tram, bus and railway network.
- 23** The building was a rectangle of the following dimensions: 63.75 m × 46.25 m. Its open-access part is a three-storey structure which includes: on the ground floor: the main hall with adjoining reading rooms and lending libraries, conference rooms with capacity to seat approx. 90 persons, didactic room with capacity to seat approx. 30 persons, and other rooms; on the 1st and 2nd floor: open space for collections of books, acting at the same time as lending rooms in which the users, supervised by librarians, will be able to get the books, general and specialist reading rooms as well as rooms for librarians and administrative workers. Above this part of the building another one, also rectangular one was constructed, which is 14.3 m high and has the following dimensions: 48.75 m × 16.25 m. It will be used for the following purposes: on the 3rd floor rooms for employees of the department of book collection and compilation will be located; on the 4th and 5th floor storehouses closed for the readers will be located, including rooms for storing special collections on the 4th floor, and rooms for protected collections on the 5th floor.

C Technical information about the new building

a Floor area (24 to 35)

24 13 260 m²

Divided into

25 6 100 m²

Special rooms (26, 27, 28, 29)

- 26 210 m² (Multimedia, Carrels and Learning Lab)
- 27 Computers in the open areas, in group and individual study rooms and in the reading rooms in administration and staff areas
- 28 60 m² (special collection study room and closed access stacks)
- 29 330.50 m² (Learning Lab, Seminar Room and Conference Room)

Special activities (30, 31, 32)

- 30 352 m²
- 31 736 m² (reading room, current press, carrels, multimedia etc.)
- 32 138.5 m²
- 33 1 553 m²
- 34 2 850 m²
- 35 4 320 m²
- 36 7 levels: 3 public and staff levels (7 685 m²), 4 levels with closed access stacks and administration and staff areas (5 575 m²)
- 37 850

Divided into

- 38 10
- 39 340 in open access and staff areas
- 40 40 – Seminar Room, 90 – Conference Room, 30 – Learning Lab I, 35 – Learning Lab II
- 41 350

b Total potential capacity of shelving (linear metres or volumes)

- 42 1 800 000 volumes (56 250 linear metres)

Including

- 43 340 000 volumes
- 44 1 460 000 volumes
- 45 1 460 000 volumes
- 46 N/A
- 47 N/A

48 120

c Mechanical features

- 49 Mechanical ventilation
- 50 Floor heating and convection
- 51 Natural, classic and emergency
- 52 Soundproof Learning Lab and Conference Room
- 53 4 lifts
- 54 2 lifts, book-drop machine, sorters
- 55 RFiD + EM
- 56 BMS
- 57 FC-10Gbps, Kat "6+" net cable 10Gbps/1Gbps
- 58

D Schedule of the building process (dates)

- 59 2002, 2006–2009
- 60 March 2003
- 61 Summer 2008–Summer 2009
- 62 September 2009
- 63 September 2009–June 2011
- 64 Summer 2011–Summer 2012
- 65 September/October 2012

E Costs (including taxes)

- 66 Own
- 67 17.3 million EUR
- 68 3.4 million EUR
- 69 N/A
- 70 20.7 million EUR

F Publications

Centrum Informacji Naukowej / Jadwiga Witek // Forum Akademickie. – 2008 No. 12

Projekt Centrum Informacji Naukowej i Biblioteka Akademicka wobec trendów i norm w budownictwie bibliotecznym / Dariusz Pawelec, Jadwiga Witek, Marzena Smyła, Tomasz Zięba // Biuletyn EBIB [on-line]. – 2009 No. 3. – <http://www.ebib.info/2009/103/a>.

Finansowanie budowy Centrum Informacji Naukowej i Biblioteki Akademickiej w Katowicach / Dariusz Pawelec, Jadwiga Witek // Fides. – 2010, nr 1/2, s. 50–58

Centrum Informacji Naukowej i Biblioteka Akademicka–nowoczesny model udostępniania zasobów / Małgorzata Waga, Anna Śpiechowicz, Andrzej Koziara // Biblioteka, książka, informacja i Internet 2010: praca zbiorowa. – Lublin: Instytut Bibliotekoznawst

Centrum Informacji Naukowej i Biblioteka Akademicka – biblioteka otwarta w społecznej przestrzeni miasta / Dariusz Pawelec, Jadwiga Witek // Bibliotheca Nostra. – 2011 No. 2

Centrum Informacji Naukowej i Biblioteka Akademicka (CINiBA) w przestrzeni miasta. Wybrane zagadnienia strategii public relations i promocji / Jadwiga Witek [in print]

Centrum Informacji Naukowej i Biblioteki Akademickiej (CINiBA) – serce uczelni i regionu. Wybrane przykłady działań informacyjnych / Jadwiga Witek [in print].

Serce miasta / Jadwiga Witek [in print]



The Scientific Information Centre and Academic Library building
Photo by Izabela Staszewska



Computers and Books in the Open Areas Architects

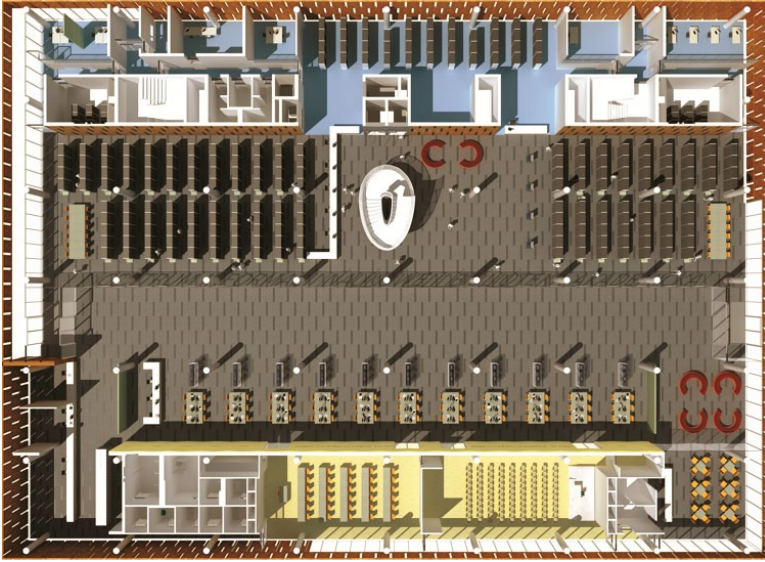
Centrum Informacji Naukowej i Biblioteka Akademicka (CINiBA). Katowice, Poland



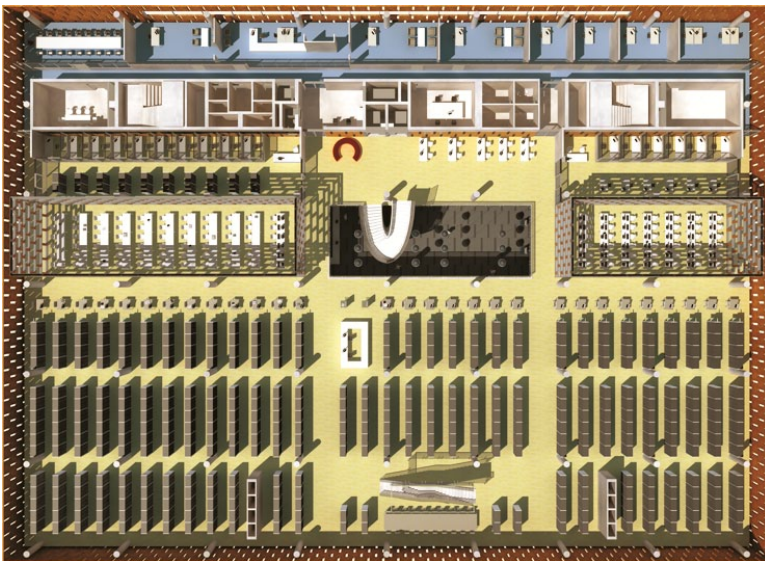
Spaces between 2nd and 3rd Floor photo by Marzena Smylla



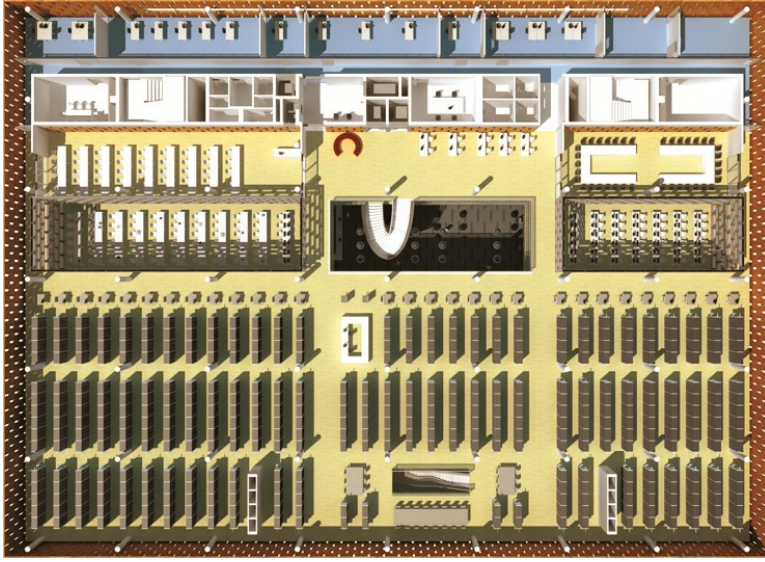
Hall and Exhibitions Spaces photo by Marzena Smylla



Open Access Areas – 1st floor



Open Access Areas – 2nd floor



Open Access Areas – 3rd floor

Library of Poznan University of Technology. Poznan, Poland

A General information about your library

a Name and address

- 1 University library
- 2 Library of Poznan University of Technology /
Poznan University of Technology
- 3 ul. Piotrowo 2, 61-138 Poznań, Poland
- 4 T +48 61 665 3668, F +48 61 665-3615, E biblioteka@put.poznan.pl
- 5 Mgr. Małgorzata Furgał
- 6 Karolina Popławska, karolina.poplawska@put.poznan.pl

b Population served

- 7 12 749
- 8 9 570
- 9 1 215
- 10 1 964

c Conditions of the library (before the new project)

- 11 1 565 m²
- 12 95
- 13 369 771 books, periodicals, standards
- 14 standards – 42 340, books – 13 781, periodicals – 5 475
- 15 books – 232 009, periodicals – 76 166
- 16 50

17 hours per week – 50, days per year 225

B The new building: aims and features

a Architect(s)

18 Studio Fikus – Biuro architektoniczne

19 Marian Fikus

20 new building

b Aims of the new building

21 More holdings in open access, more regular readers seats, more computer seats, work group rooms, places for individual work, wi-fi, extension of the opening hours to the public, seminar rooms, free access to books, periodicals, standards.

c Special Features

22 location of the library on Piotrowo campus

23 rectangular plan, high and wide windows, disabled access

C Technical information about the new building

a Floor area (24 to 35)

24 3 680

Divided into

25 1 157 m²

Special rooms (26, 27, 28, 29)

26 63 m²

27 —

28 132 m²

29 119 m²

Special activities (30, 31, 32)

30 50 m²

- 31 —
 - 32 —
 - 33 626 m²
 - 34 747 m²
 - 35 248 m²
 - 36 2 levels, ground floor and first floor
 - 37 205
- Divided into
- 38 20
 - 39 77
 - 40 28
 - 41 80

b Total potential capacity of shelving (linear metres or volumes)

- 42 331 965
- Including
- 43 76 778
 - 44 255 187
 - 45 0
 - 46 27
 - 47 special collections 241 893
 - 48 50

c Mechanical features

- 49 air conditioning
- 50 yes
- 51 yes
- 52 yes
- 53 lifts, elevators

- 54 no
- 55 RFID system, access control, identity cards for employees
- 56 yes
- 57 Wi-Fi, FastEthernet 100 Mb/s
- 58

D Schedule of the building process (dates)

- 59 27. 01. 1999
- 60 7. 12. 1999
- 61 7. 06. 2001
- 62 1. 10. 2001
- 63 1. 10. 2001 – 14. 10. 2010
- 64 11. 2010 – 02. 2011
- 65 14. 10. 2010

E Costs (including taxes)

- 66 no data
- 67 no data
- 68 no data
- 69 no data
- 70 Library and Lecture-Conference Centre total: 75 616 000 / included European Funds from Regional Programmes – 56 712 000

F Publications



Library – View from the Back © Natalia Cofta



Main Entrance to the Lending Room © Natalia Cofta



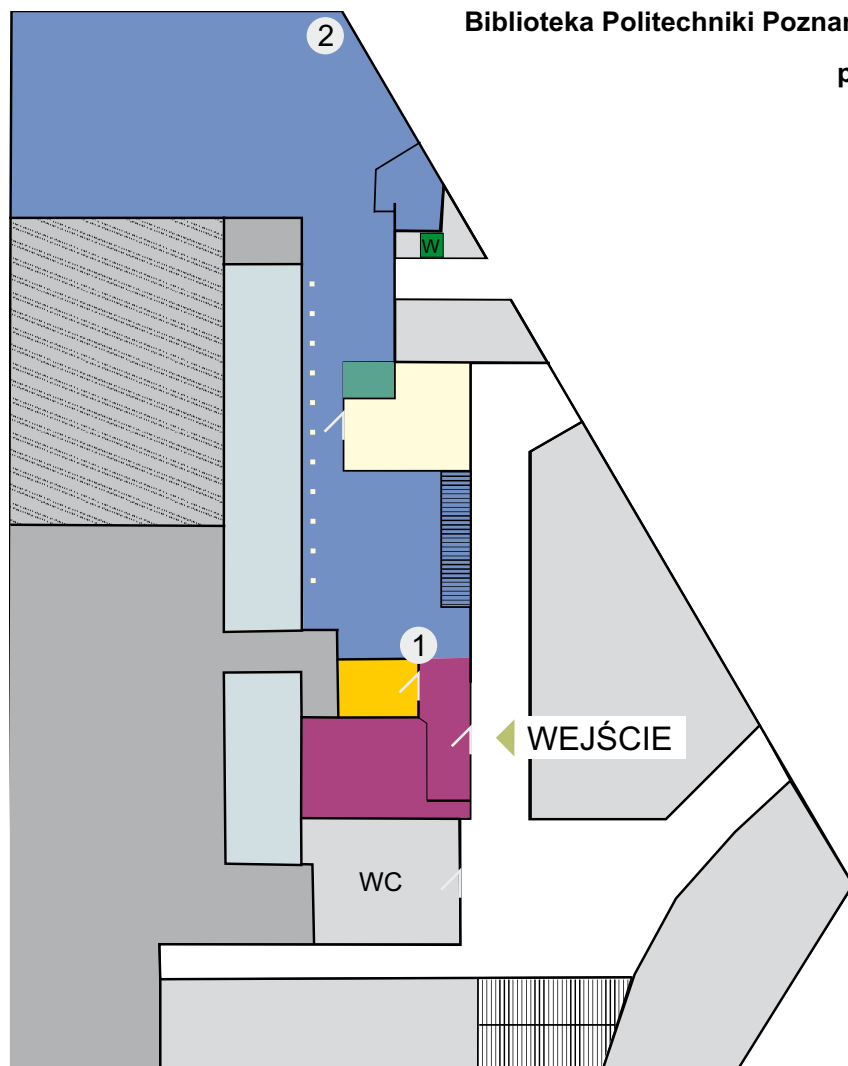
Online Catalogue © Natalia Cofta



Online Catalogue © Natalia Cofta

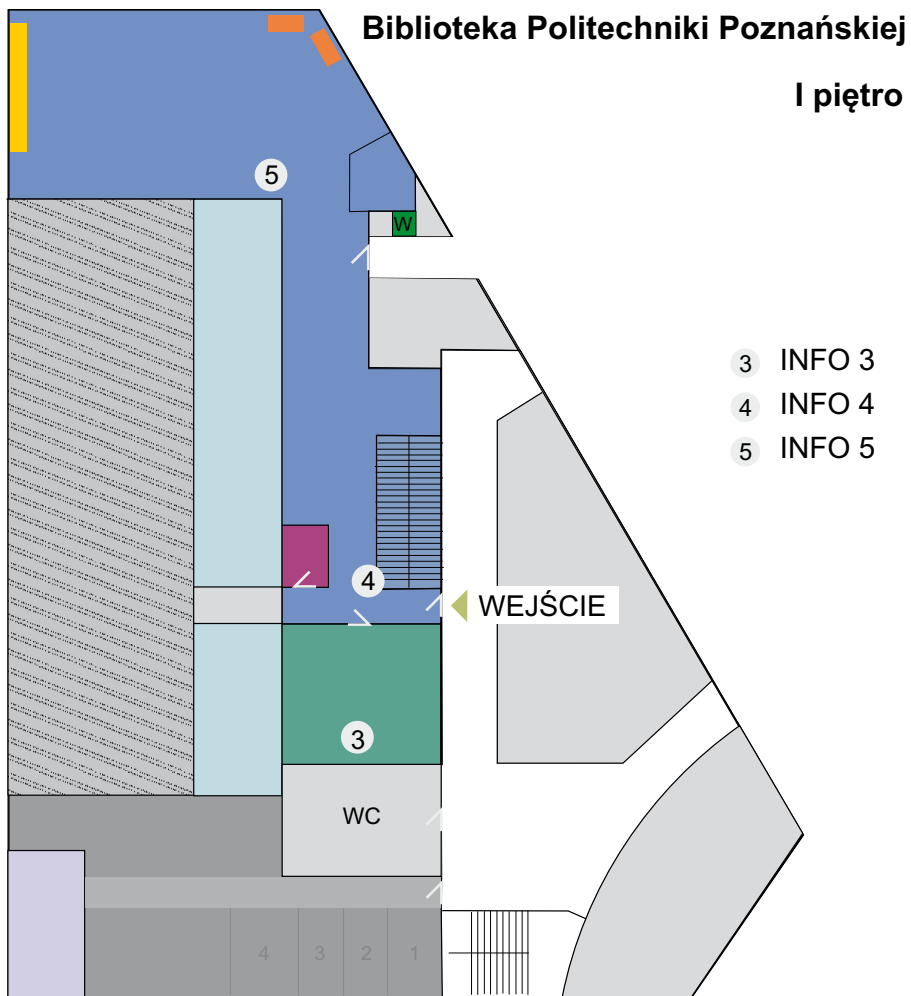
Biblioteka Politechniki Poznańskiej

parter



- | | |
|------------------------------------|--------------------------------------|
| ■ Aktywny Księgozbiór Dydaktyczny | ■ Katalog |
| ■ Pokój do pracy zespołowej | ■ Pracownie biblioteczne |
| ■ Wypożyczalnia | ■ Magazyn |
| ■ Wypożyczalnia Międzybiblioteczna | ■ Patio |
| ① INFO 1 | □ Korytarze |
| ② INFO 2 | ■ Sale wykładowe i pomieszczenia CWK |

Ground Floor © Joanna Pomianowicz



1 administracja 2 z-ca dyrektora 3 sekretariat 4 dyrektor

- | | |
|-----------------------------------------------------------------------------------------------------------------------------------------------------------------------------------|-----------------------------------------------------------------------------------------------------------------------------------------------------------------------------------------------------------------------------|
| Czytelnia | Pracownie biblioteczne |
| Informatorium E-biblioteki | Salka seminaryjna |
| Pokój do pracy zespołowej | Magazyn |
| Stanowiska dla osób z dysfunkcjami | Patio |
| Kabiny do pracy indywidualnej | Korytarze |
| | Sale wykładowe i pomieszczenia CWK |

First Floor © Joanna Pomianowicz

University Library of the Catholic University in Ruzomberok. Ružomberok, Slovakia

A General information about your library

a Name and address

- 1 University library
- 2 University Library of the Catholic University in Ruzomberok /
The Catholic University in Ruzomberok
- 3 Hrabovska cesta 1, 034 01 Ruzomberok, Slovakia
- 4 T +421 55 68 36 159, E kniznica@ku.sk
- 5 RNDr. Sona Hlinkova, PhD.
- 6 RNDr. Sona Hlinkova, PhD.

b Population served

- 7 5 759
- 8 4 392
- 9 3 366
- 10 675

c Conditions of the library (before the new project)

- 11 2 473 m²
- 12 194
- 13 3 906 linear metres
- 14 2 731 linear metres
- 15 1 175 linear metres

- 16 18
- 17 54

B The new building: aims and features

a Architect(s)

- 18 A_Projekt, Ruzomberok, a02 atelier, Dolny Kubin, www.aprojektrk.sk, www.a02.sk
- 19 Ing. arch. Stanislav Sutvaj, Ing. Jan Potoma, Mgr. art. Matus Bistan
- 20 new building

b Aims of the new building

- 21 The idea to build new University Library of the Catholic University resulted from a necessity to provide a modern library and information services for the teachers and students of the university. As well as a spacious library located on the seven floors, there will also be University Archives, rooms for lectures and galleries. The building will also contain rooms to organize cultural and social events, publishing, literary and artistic club activities, media activities, quiet study rooms, a section for valuable items and a coffee bar. There will be more available books in open stacks, special archives, more readers seats etc. The library will not only serve lecturers and students of the Catholic University, but will also be open to the wider public of Slovakia. We believe that the new library will become the real heart of the University.

c Special Features

- 22 The University Library is built in such a way to create a winged block scheme of existing objects and supports in the long term the idea of a homogenous complex of the Catholic University and it gives the potential for a final urbanisation of the complex in the future. The new library is designed as part of university campus. Library completes the structure of the original building (now buildings of the Faculty of Arts an Education, Auditorium) from architect Skorupa. Campus will be enlarged by a new dormitory, auditorium, chapel and other university facilities.
- 23 The proposed building consists of two parts–horizontal 4-storey part for the public and the 7-storey vertical section for library administration.

The main structure is of concrete frame. The outer facade is composed of metallic and glass surfaces. The building has disabled access and also the library services will be adapted to disabled persons.

C Technical information about the new building

a Floor area (24 to 35)

24 9 265 m²

Divided into

25 4 000 m²

Special rooms (26, 27, 28, 29)

26 120 m²

27 200 m²

28 400 m² (historian Durica collection)

29 300 m²

Special activities (30, 31, 32)

30 320 m²

31 200 m²

32 240 m²

33 1 130 m²

34 110 m²

35 1 800 m²

36 7 administration levels, 4 public levels, 1 basement (archives, technical rooms)

37 570

Divided into

38 30

39 140

40 150

41 250

b Total potential capacity of shelving (linear metres or volumes)

42 22 540 linear metres (790 000 volumes)

Including

43 5 400 linear metres (190 000 volumes)

44 17 140 linear metres (600 000 volumes)

45 0

46 0

47 0

48 21

c Mechanical features

49 air conditioning with automatic control and regulation

50 underfloor heating combined with air conditioning, heat pump source and gas heating

51 main lighting–fluorescent tubes, additional lighting – downlights over the study places

52 we expect low levels of noise in open study places; closed and group study rooms are designed for quiet study

53 3 lifts for 10 people, 1 glazed panoramic lift in entrance place, 2 utility lifts

54 lift + manual hand truck

55 magnetic chip in the book + detection gates

56 automatic control and energy management building, electronic fire alarm, automatic fire-fighting equipment in special archives, etc.

57 structured data cabling, about 900 possible connections (including about 400 in study places) + wi-fi

58

D Schedule of the building process (dates)

59 2005–2006

60 2006

- 61 2010
- 62 July 2011
- 63 18 months
- 64 November, December 2012
- 65 12th December 2012

E Costs (including taxes)

- 66 0.4 million EUR
- 67 8 million EUR €
- 68 2.5 million EUR
- 69 50 000 EUR€
- 70 11 million EUR

F Publications

The New University Library

More information: <http://kniznica.ku.sk/>



Front View © Architects



Back View © Architects

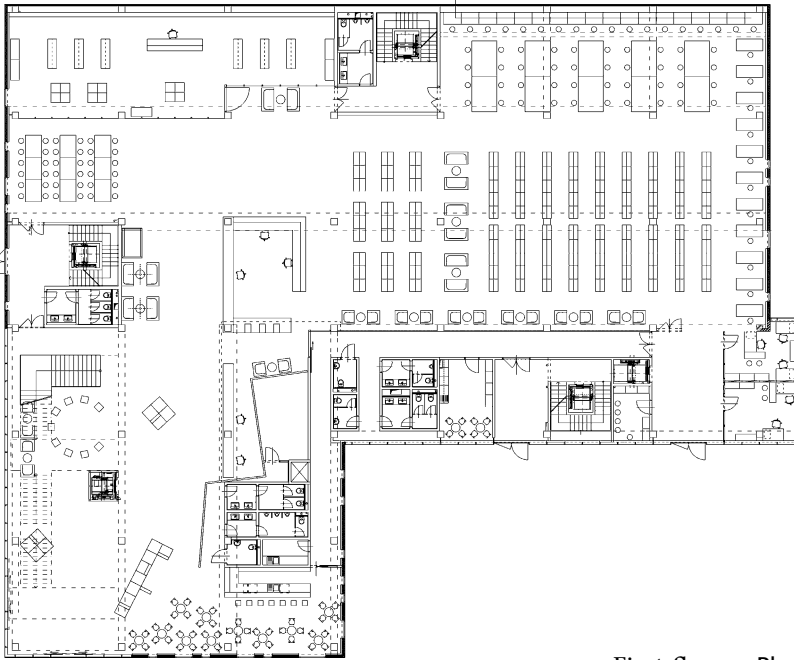


Interior – First Floor – Entrance © Architects

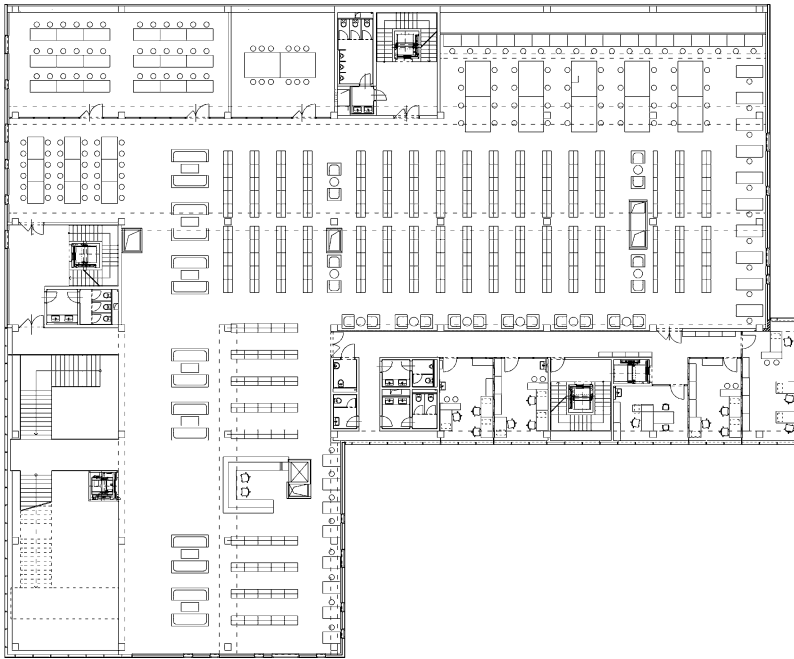


Interior – Third Floor – Balcony © Architects

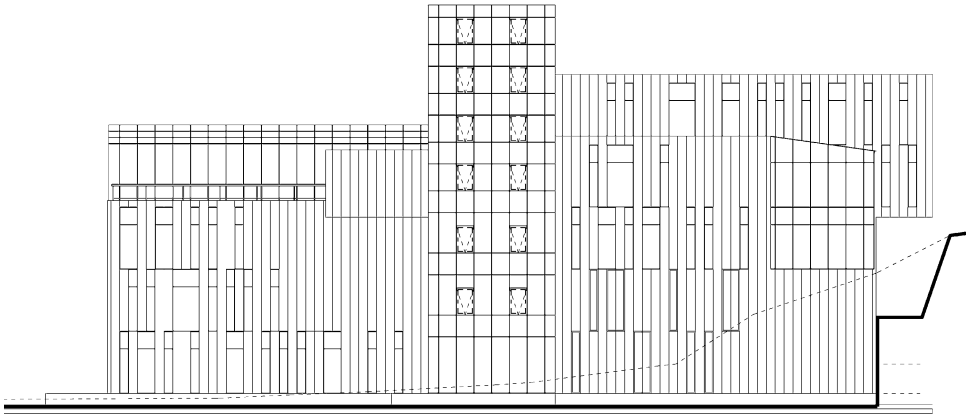
University Library of the Catholic University in Ružomberok. Ružomberok, Slovakia



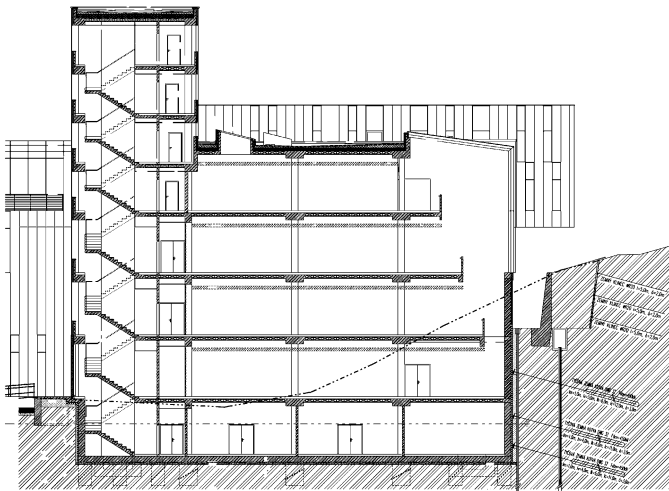
First floor Plan © Architects



Second floor Plan © Architects



Elevation West Plan © Architects



Section 1 Plan © Architects

University Library of the Catholic University in Ružomberok. Ružomberok, Slovakia

L

Zentral- und Hochschulbibliothek Luzern – Standort UNI/PHZ-Gebäude. Lucerne, Switzerland

A General information about your library

a Name and address

- 1 University library
- 2 Zentral- und Hochschulbibliothek Luzern – Standort UNI/PHZ-Gebäude /
Zentral- und Hochschulbibliothek Luzern
- 3 Frohburgstrasse 3, CH-6002 Lucerne, Switzerland
- 4 T 041 228 77 57, T 041 228 77 67, E info.upg@zhbluzern.ch
- 5 Ulrich Niederer
- 6 Tobias Schelling

b Population served

- 7 18 000
- 8 3 300
- 9 600
- 10 900

c Conditions of the library (before the new project)

- 11 total 1 300 m², 4 sites
- 12 approx. 200
- 13 100 000 books (900 000 in a storage depot)
- 14 100 000

- 15 900 000 (in a storage depot)
- 16 21
- 17 57,5–66 hours per week at the different sites

B The new building: aims and features

a Architect(s)

- 18 Enzmann + Fischer Architekten, Zurich, www.enzmannfischer.ch
- 19 Oliver Bachmann
- 20 renovation

b Aims of the new building

- 21 Centralization of 4 small-scale libraries to one big university library. Aims: Integration of the different holdings to one stock. Various styles of reading areas; reader seats for every 6th student; more open stacks. extension of the opening hours with a 24/7-access for university members.

c Special Features

- 22 In the city centre, close to the train and bus station, to the Kultur-und Kongresszentrum (architect Jean Nouvel) and to the Lake of Lucerne. The new, six-level building includes the whole University of Lucerne, parts of the college of education and the library. The library is situated on the first floor.
- 23 Rectangular plan, 120 × 55 m with three atriums and a glass-roofed main stairway. Remarkable facade (planned as precast concrete panels; carried out as a aluminium construction with synthetic materials). Low ceiling heights (due to the structure of the building).

C Technical information about the new building

a Floor area (24 to 35)

- 24 5 000 m²

Divided into

25 Open space library. Separated rooms: reading room for PhD-students; reading room; 3 group study rooms.

Special rooms (26, 27, 28, 29)

26 N/A

27 18 places (not in a separated room)

28 N/A

29 Several in the building, but none in the library

Special activities (30, 31, 32)

30 N/A

31 Several in the building, but none in the library

32 Cafeteria and canteen at the ground floor (outside of the library)

33 N/A

34 N/A

35 Whole building with 5 staircases; library only accessible via the main staircase, 2 lifts. Toilets in the library. Technical rooms in the minor floors of the building.

36 6 levels; library on the first floor; 2nd to 4th floor: offices and seminar rooms of the university; basement and ground floor: lecture rooms, cafeteria, canteen, post office, etc.

37 670

Divided into

38 N/A

39 18

40 3 study rooms

41 Approx. 640

b Total potential capacity of shelving (linear metres or volumes)

42 300 000 volumes

Including

43 300 000 volumes

- 44 0
- 45 0
- 46 400 volumes
- 47 0
- 48 23

c Mechanical features

- 49 Ventilation only - no air conditioning
- 50 Ventilation
- 51 Ceiling lighting; some of the reader places with individual lighting
- 52 Reading areas with baffles.
- 53 Situated on the first floor, the library is accessible via a stairway or a lift.
- 54 N/A
- 55 RFID
- 56 For the whole building operated by the facility management of the university.
- 57 Multimedia 8, cat. 7; 1Gbit/s
- 58

D Schedule of the building process (dates)

- 59 2004–2005
- 60 2005
- 61 2006–2007
- 62 Dec. 2007
- 63 Dec. 2007 – June 2011
- 64 July/August 2011
- 65 03/09/2011

E Costs (including taxes)

- 66 30 million EUR

- 67 64 million EUR (for the construction of the whole building: university and library; incl. fees)
- 68 6 million EUR (for the whole building)
- 69 see nr. 67
- 70 100 million EUR (for the whole building)

F Publications

Schelling, Tobias: Hier ging einmal die Post ab....: Die Zentral- und Hochschulbibliothek Luzern in einem nachgenutzten Industriegebäude. In: Hauke, Petra und Klaus-Ulrich Werner (Hrsg.): Secondhand – aber exzellent!: Bibliotheken bauen im Bestand. Bad Honnef: Bock + Herchen, 2011. S. 60–73.



Library from northwest photo by © Ulrich Niederer



Entrance photo by © Priska Kettere



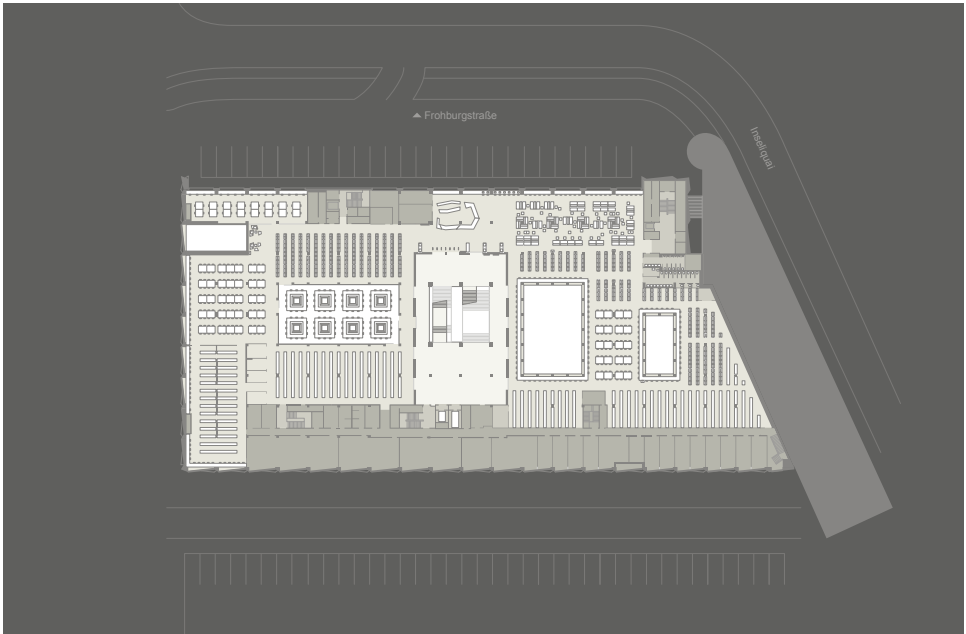
Group Study Area photo by © Priska Ketterer



Open Stack near the Entrance photo by © Priska Ketterer



Reading Places around the Atrium photo by © Priska Ketterer



Plan of the Library © Artec (Berlin)

University Library.

Aberdeen, United Kingdom

A General information about your library

a Name and address

- 1 University library
- 2 University Library /
University of Aberdeen
- 3 Bedford Road, Aberdeen, AB24 3AA
- 4 T +44 (0)1224 273 330, F +44 (0)1224 273 956, E library@abdn.ac.uk
- 5 Mrs Chris Banks
- 6 Mrs Wendy Pirie

b Population served

- 7 7 424
- 8 12 920
- 9 2 832
- 10 2 821

c Conditions of the library (before the new project)

- 11 7 772 m²
- 12 766
- 13 24 000 linear metres
- 14 24 000 linear metres
- 15 0
- 16 55 in QML and 11 in Special Collections

17 92 hours per week, 353 days per year

B The new building: aims and features

a Architect(s)

18 schmidt, hammer, lassen, <http://shl.dk/>

19 Stuart Hill

20 new building

b Aims of the new building

21 To co-locate our collections of historically significant books and archives with our modern collections in a new purpose-built 21st-century learning and research environment that is open to the wider public, as well as students and staff. To move out of two buildings that were no longer suitable, one built in the 1950's, the other in the late 1960's.

c Special Features

22 On the western perimeter of the main Old-Aberdeen campus: see <http://www.abdn.ac.uk/maps/old-aberdeen.php>

23 Rectangular plan: steel, concrete and glass construction: glass curtain walling: BREEAM excellent award: fully accessible.

C Technical information about the new building

a Floor area (24 to 35)

24 14 800 m²

Divided into

25 6 564 m²

Special rooms (26, 27, 28, 29)

26 167 m²

27 678 m²

28 216 m²

29 398 m²

Special activities (30, 31, 32)

30 350 m²

31 0

32 202 m²

33 869 m²

34 1 295 m²

35 4 061 m²

36 Nine levels in total: Special Collections Centre is on the Lower Ground Floor. The Ground Floor entrance level is open to the general public. The upper floors 1–7 contain the modern collections. Access to all collections is via a controlled entry point on the Ground Floor

37 1 455

Divided into

38 8

39 201

40 160

41 1086

b Total potential capacity of shelving (linear metres or volumes)

42 23 702 linear metres

Including

43 13 078

44 10 500

45 10 500 included in 44

46 124

47 0

48 72

c Mechanical features

49 All air system, using in-direct and direct adiabatic evaporation cooling, coupled with desiccant wheel and thermal wheel recovery. Utilises the University CHP system.

- 50 Supplied through University District Heating System
- 51 Class 4 system with Zumptobel controlled system
- 52 Acoustic absorption to control reverberance in the library open areas, all of which are connected to a main central atrium. Acoustic absorption in other spaces such as offices, meeting rooms, classrooms and exhibition space.
- 53 Otis lifts: one goods lift and one passenger lift for library staff only: four public lifts, of which three are triplex glass
- 54 N/A (manual, trolleys)
- 55 3M detection system
- 56 Trend Controls
- 57 The New Library has both wired and wireless network connectivity. The wired network provides switched 1Gbps capacity to the desk, while the ubiquitous 802.11n wireless network provides effective bandwidth of up to 150 Mbps per connection.
- 58 3M automated returns system

D Schedule of the building process (dates)

- 59 2004–2005
- 60 2005
- 61 10. 09. 08 – 30. 06. 09
- 62 April 2009
- 63 2009–2012
- 64 5 August 2011 – 11 September 2011 (modern collections only: special collections moved in oct/nov 2011)
- 65 12 September 2011 (Official opening to take place in September 2012)

E Costs (including taxes)

- 66 0
- 67 £42 million incl. VAT
- 68 £3.4 million incl VAT

69 £10.2 million incl VAT

70 £58 million incl VAT (includes landscaping and demolition of old library)

F Publications

http://www.ribajournal.com/index.php/feature/article/storeys_with_a_twist/

<http://shldesign.dk/university-of-aberdeen-new-library/>

<http://www.architectsjournal.co.uk/buildings/education/library-university-of-aberdeen-by-schmidt-hammer-lassen/8623549.article>

http://www.e-architect.co.uk/aberdeen/aberdeen_university_library.htm

<http://www.architecturetoday.co.uk/?p=18812>

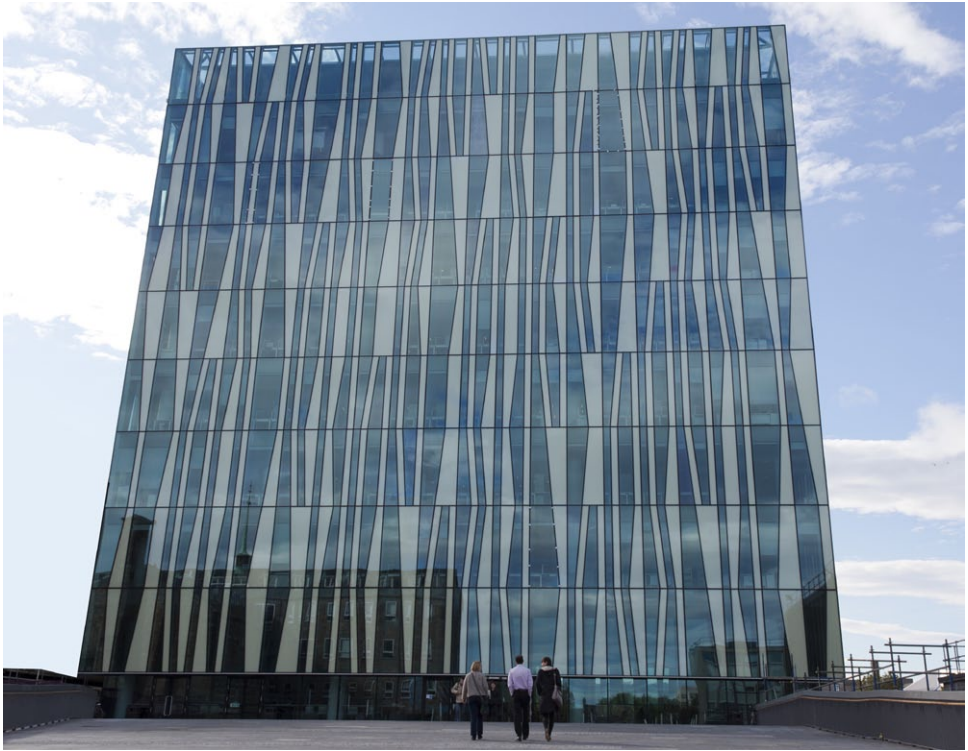
<http://www.abdn.ac.uk/news/archive-details-10630.php>

http://www.worldarchitecturenews.com/index.php?fuseaction=wanappln.projectview&upload_id=12515

<http://www.ads.org.uk/scottisharchitecture/highlights/university-of-aberdeen-new-library>

<http://www.origindesignstudio.co.uk/blog/architect-spotlight-schmidt-hammer-lassen.html>

http://www.postgrad.com/University_of_Aberdeen_opens_new_library/newsstory/972/



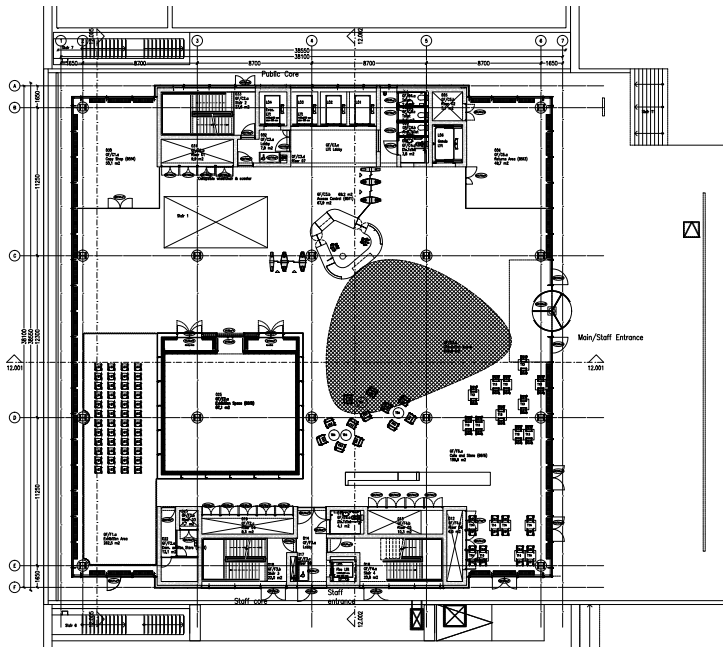
Main Facade © University of Aberdeen



Atrium Looking Down © University of Aberdeen



View of Study Area
© University of Aberdeens



Ground Floor Plan
© University of Aberdeen

The McClay Library.

Belfast, United Kingdom

A General information about your library

a Name and address

- 1 University library
- 2 The McClay Library /
Queen's University Belfast
- 3 College Park, Belfast, BT7 1LP
- 4 T +44 (0)2890976322, E library@qub.ac.uk
- 5 Mr John Gormley
- 6 Ms Elizabeth Traynor; Ms Karen Latimer

b Population served

- 7 38 000
- 8 22 000
- 9 6 000
- 10 3 000

c Conditions of the library (before the new project)

- 11 20 574 m²
- 12 2 755
- 13 46 000 linear metres
- 14 38 000 linear metres
- 15 8 000 linear metres
- 16 118

17 70 hours per week, 330 days per year

B The new building: aims and features

a Architect(s)

- 18 Shepley Bulfinch Richardson Abbott, Boston, USA
In association with RPP Architects, Belfast, Northern Ireland
- 19 Sandy Howe for SBRA Alan Shields for RPP
- 20 new building

b Aims of the new building

- 21 To provide a single Information Services building bringing together all of the services provided to users in the areas of Library, Computing, Media Services and Language Centre. To provide a world class, technology-rich, building in place of the increasingly inadequate space provided in the former Main and Science Libraries.

c Special Features

- 22 Central location on the main University campus
- 23 “Bent bar” shape incorporating brick and sandstone exterior finishes with large areas of glass. Disabled access and energy efficient, sustainable design were essential requirements.

C Technical information about the new building

a Floor area (24 to 35)

- 24 18 125 m² gross internal area

Divided into

- 25 8 736 m² (including, open plan computer areas, student lounge and the café)

Special rooms (26, 27, 28, 29)

- 26 Two Language Labs – Area 178 m². Audio visual equipment (combination of plasma screens and data projects linked to dedicated pcs and associated equipment) has also been provided in group study rooms, lecture theatre, computer training room and meeting rooms.

- 27 Dedicated computer rooms – 551 m². 2 open access computer rooms and a computer training
- 28 Reading room – 239 m². Restricted access special collections store included in item 34 closed access stacks
- 29 21 Group study rooms have been equipped with audio visual equipment. – 429 m².

Special activities (30, 31, 32)

- 30 Small exhibition spaces on Ground and 1st floors
- 31 Seats 80–100. Area 95 m²
- 32 Franchised café on site
- 33 2 487 m² (including staff areas associated with café)
- 34 504 m²
- 35 4 906 m² (including plant rooms and stores)
- 36 4
- 37 2 360

Divided into

- 38 10
- 39 500
- 40 350
- 41 1500

b Total potential capacity of shelving (linear metres or volumes)

- 42 2 000 000 volumes

Including

- 43 1 500 000 volumes
- 44 500 000 volumes
- 45 1 000 000 volumes (Included in 43 and 44)
- 46 100 linear metres
- 47 N/A
- 48 102

c Mechanical features

- 49 Combination of natural and mechanical displacement ventilation in open plan areas with chilled beam comfort cooling in three areas with high concentration of PCs.
- 50 Heated using waste heat from data centre and ground source heat pumps with backup gas-fired boilers.
- 51 Fluorescent general lighting, compact fluorescent and metal halide feature lighting. Automatic controls in open plan areas.
- 52 Extensive acoustic modeling carried out at design stage. Acoustic ceiling tiles and wall paneling installed where recommended by model. Carpet installed in open plan areas provided large areas of acoustic absorbent. Main circulation stair enclosed. Floors zoned in to quiet study and whisper zones which are clearly defined within the building. Group activities catered for in dedicated group study rooms. Mechanical and electrical plant design to meet specific acoustic standards.
- 53 Two 17 person passenger lifts and one 2000kg service lift.
- 54 None
- 55 Book detection systems have been installed at the short loan area and the exit from the building (Trevor Lyttle could provide further information on these systems if required). The entrance and exit to the building are covered by CCTVs as is the external perimeter of the building. Access to the special collections store and reading room is restricted. The areas are alarmed and are covered by CCTVs.
- 56 Fully networked electronic building management system as manufactured by Trend Ltd
- 57 The McClay Library is on the University's wired and wireless network and connected to JANET.

58

D Schedule of the building process (dates)

- 59 Jan 2003 – April 2003.
- 60 May 2003 – November 2003
- 61 Dec 2003 – November 2005
- 62 16th January 2006

63 3 Years and 17 weeks. Completed 15th May 2009

64 22nd May 2009 – 10th July 2009

65 27th July 2009

E Costs (including taxes)

66 N/A

67 £37.7 million

68 £4.3 million

69 £4.3 million

70 £46.3 million

F Publications

Tennyson, Michael. 'Read all about it'. *Perspective*, 18(5), September/October 2009 pp 54–61

Rainwater harvesting at the seat of learning. *Specify* 23 December 2009 p 3



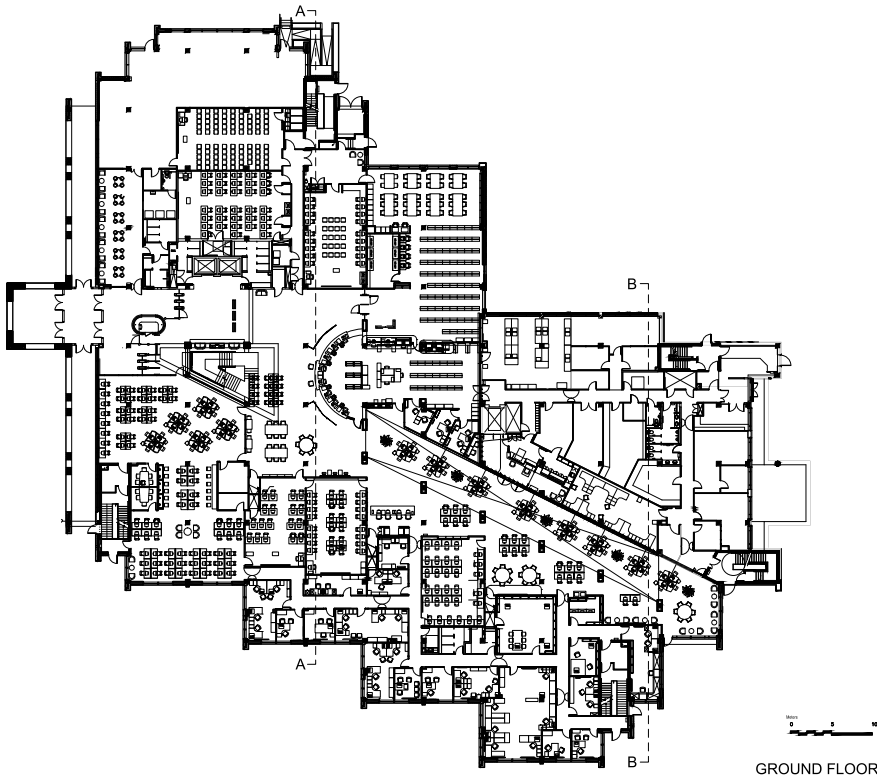
McClay Library Exterior Shepley Bulfinch Richardson Abbott,
© Queen's University Belfast



General Reading Area Shepley Bulfinch Richardson Abbott,
© Queen's University Belfast



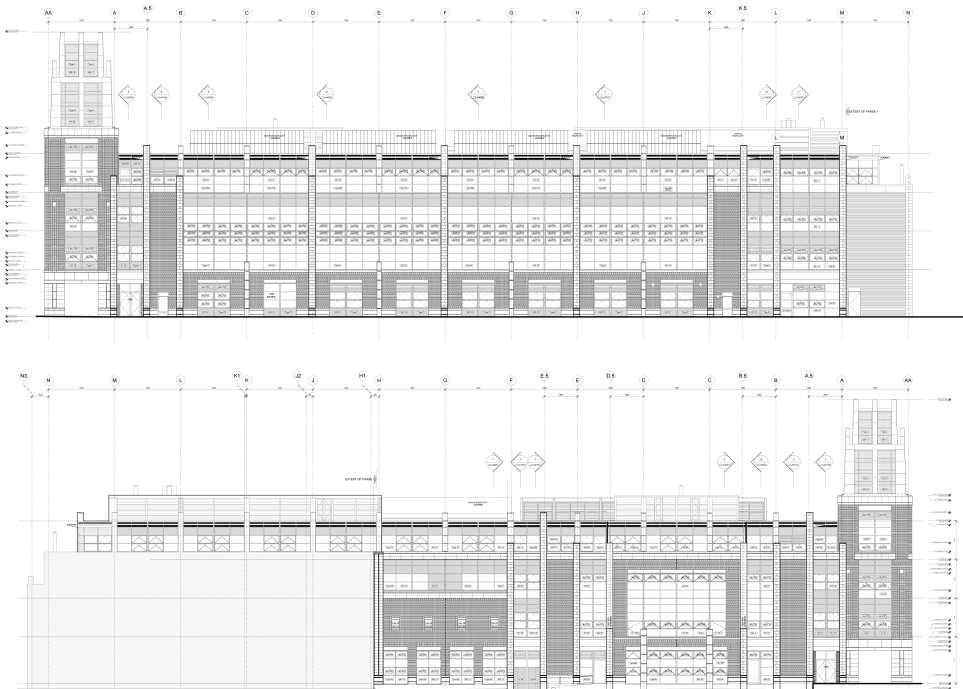
Borrower Services Desk Shepley Bulfinch Richardson Abbott,
© Queen's University Belfast



Plan Ground Floor Shepley Bulfinch Richardson Abbott,
© Queen's University Belfast



Atrium Shepley Bulfinch Richardson Abbott, © Queen's University Belfast



North and South Elevations Shepley Bulfinch Richardson Abbott, © Queen's University Belfast

University of Edinburgh Main Library. Edinburgh, United Kingdom

A General information about your library

a Name and address

- 1 University library
- 2 University of Edinburgh Main Library /
University of Edinburgh
- 3 George Square, Edinburgh, EH8 9LX
- 4 T +44 131 651 5041, E IS.Helpline@ed.ac.uk
- 5 Sheila E Cannell, Sheila.cannell@ed.ac.uk
- 6 Lesley Bryson, Lesley.Bryson@ed.ac.uk

b Population served

- 7 33 000 (full time equivalent)
- 8 23 436 (headcount)
- 9 5 538 (headcount)
- 10 7 800

c Conditions of the library (before the new project)

- 11 27 693 m² (built in imperial measures, 298 081 m²)
- 12 1 750
- 13 63 223
- 14 43 756
- 15 43 756
- 16 185

- 17 07.30–02.30 (19 hours per day), 34 weeks. Reduced hours (various) out of termtime

B The new building: aims and features

a Architect(s)

- 18 Lewis&Hickey Architects, www.lewishickey.com
 19 Emily Forde
 20 renovation

b Aims of the new building

- 21 Full vision for project available at <http://www.ed.ac.uk/schools-departments/information-services/services/library-museum-gallery/using-library/mlrp/redevelopment/vision>
 Brief project vision is:
 The redeveloped Main Library building will be:
- › An intellectual hub for the University
 - › The focus for a wide range of activities in learning and research
 - › A place where users can engage and converse with each other and with information specialists
 - › More open and accessible
 - › Flexible to accommodate changes in the future

c Special Features

- 22 Location on campus in square which is all University buildings. Location is between 2 green spaces, George Square and the Meadows. Redevelopment has “brought the outside in”.
- 23 Original building designed by Sir Basil Spence and opened in 1967. For history of building see <http://www.ed.ac.uk/schools-departments/information-services/services/library-museum-gallery/using-library/mlrp/redevelopment/history>
 Building was A listed in 2005. Building is rectilinear, very fine finishes – exposed polished concrete frame, polished concrete pillars, finishes in teak and beech. Exterior is primarily horizontal. Modular grid is 27 square feet.
 Redevelopment is of similar high quality, retaining listed features. Modest introduction of highlight colours, and elliptical shape based on the proportions of the building plan.

C Technical information about the new building

a Floor area (24 to 35)

24 28 175 m² (inc small new mezzanine addition)

Divided into

25 19 102 m²

Special rooms (26, 27, 28, 29)

26 53 m²

27 1 564 m²

28 BS5454 archive storage facilities, conservation studio, digital imaging studio, viewing room, reading room, research centre and seminar rooms.
2 946 m²

29 545 m²

Special activities (30, 31, 32)

30 118 m²

31 N/A

32 378 m² Library Cafe

33 4 912 m²

34 2 365 m²

35 3 706 m²

36 8 levels, 7 open to the public

37 2 248

Divided into

38 AV equipment in all meeting rooms and study pods

39 573

40 8 including 3 training room

41 0

b Total potential capacity of shelving (linear metres or volumes)

42 31 464 linear metres plus 13 463 linear metres Special Collections

Including

- 43 31 465 linear metres
- 44 13 463 linear metres
- 45 included in 43 above
- 46 included in 44 above
- 47 0
- 48 185

c Mechanical features

- 49 Chilled beam system
- 50 Chilled beam and space radiators fed by University Combined Heat and Power system
- 51 Intelligent
- 52 Features, eg tiles, absorb sound
- 53 3 lifts, to be upgraded at end of project
- 54 No. 2 3M Book return sorters
- 55 Boon Edam
- 56 BEMS centralised controlled by University Estates and Building
- 57 All building wireless enabled. Wiring is Cat 6 in raised floor
- 58 Original static shelving reused, braced and with new acrylic pastel coloured shelf ends 2 offsite stores created, one permanent, one for duration of project.

D Schedule of the building process (dates)

- 59 2003–2005
- 60 No competition. Design Team procured 2005 through OJEU based of cost quality assessment
- 61 No
- 62 April 2007
- 63 April 2007 – January 2013, 7 sections

- 64 Ongoing, with move management managed by Thomson Bethune. Major staff decants 2007-date. Two offsite stores created as part of project – one will be required permanently, one as decant store.
- 65 Ongoing, first phase opened August 2008, Ground Floor opened June 2009. 7 floors now completed with Lower Ground Floor to be completed in January 2013

E Costs (including taxes)

- 66 N/A
- 67 £37 million
- 68 £2.9 million
- 69 £11 million Decant costs £5.6 million
- 70 £58 million

F Publications

Project Website

Project has website with full information at <http://www.ed.ac.uk/schools-departments/information-services/services/library-museum-gallery/using-library/mlrp/redevelopment>

Videos

£60m library upgrade <http://www.youtube.com/watch?v=c5dHUVQ2T6Q>
 Ian Rankin opens library upgrade <http://www.youtube.com/watch?v=W76P0IDTv90>



Main Library, Main Entrance & External View
Lewis&Hickey / © University of Edinburgh



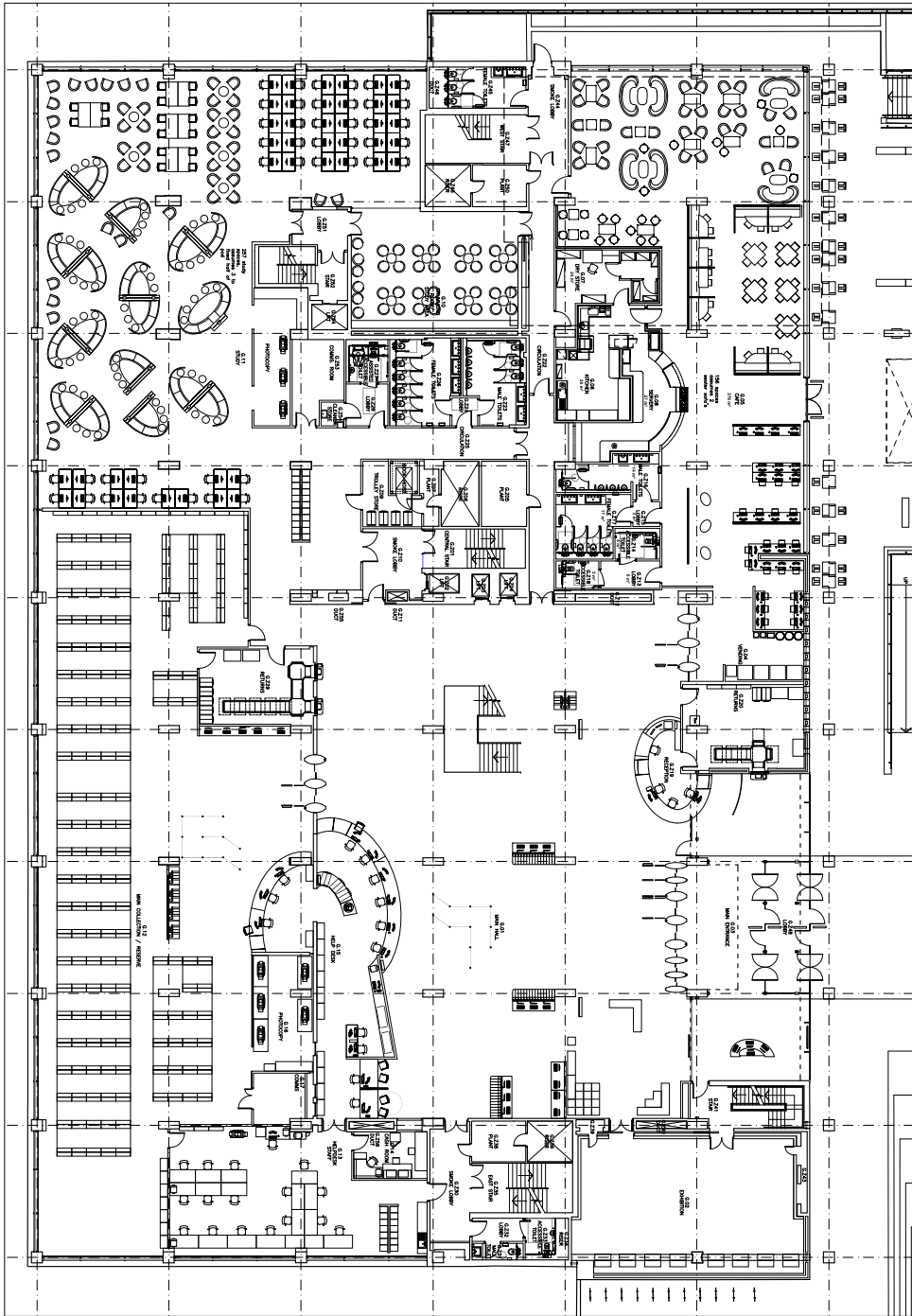
Library Forum, Ground Floor, Helpdesk & Holopro Screens
Lewis&Hickey / © University of Edinburgh



Lower Ground Floor Office Visual Lewis&Hickey / © University of Edinburgh



Southerly View across the Meadows from the Floor 5 Silent Study area
Lewis&Hickey / © University of Edinburgh



Main Library, Ground Floor Plan Lewis&Hickey / © University of Edinburgh

Dame Elizabeth Esteve-Coll Centre. Kingston, United Kingdom

A General information about your library

a Name and address

- 1 University library
- 2 Dame Elizabeth Esteve-Coll Centre /
Kingston University
- 3 Knights Park campus, Grange Rd, KT1 2QJ
- 4 T 020 8417 4052, E library@kingston.ac.uk
- 5 Graham Bulpitt
- 6 Rowan Williamson

b Population served

- 7 39 626
- 8 20 745
- 9 3 975
- 10 0

c Conditions of the library (before the new project)

- 11 772 m²
- 12 158
- 13 1 450 linear metres
- 14 1 374 linear metres
- 15 76 linear metres
- 16 10

- 17 average of 61 hours per week, 351 days per year

B The new building: aims and features

a Architect(s)

- 18 Pascall + Watson, www.pascalls.co.uk
 19 Geoff Walton
 20 renovation

b Aims of the new building

- 21 The relocation of the LRC from the first floor to the ground floor aimed to create a brand new interdisciplinary learning zone at the heart of the campus. This has been designed to create a hub for students services, with a natural flow between the various services on offer.

c Special Features

- 22 The building is 1930s and is located on the banks of a small river, The Hogsmill, creating a very rural and peaceful atmosphere despite its proximity to Kingston town centre.
- 23 The project was ambitious as it took a quadrangle with an open air centre and glassed over it, creating a brand new atrium space, light, airy, and visually dramatic. The original 1930s brickwork has been cleaned up and left exposed instead of plastered and painted, which has created the feeling of bringing the outside in, as well as creating continuity between the old and the new.

C Technical information about the new building

a Floor area (24 to 35)

- 24 951 m²

Divided into

- 25 799 m²

Special rooms (26, 27, 28, 29)

- 26 0

- 27 54 m²

28 41 m²

29 31 m²

Special activities (30, 31, 32)

30 0

31 0

32 0

33 26 m²

34 0

35

36 Ground floor only

37 165

Divided into

38 0

39 41

40 12

41 112

b Total potential capacity of shelving (linear metres or volumes)

42 1 113 linear metres

Including

43 1 037 linear metres

44 76 linear metres

45 810 linear metres

46 57 linear metres

47 static shelving 303 linear metres

48 10

c Mechanical features

49 The building now has the capacity to operate intelligently – for example when the external conditions are right the windows will open

automatically to keep the LRC cool and reduce the need for mechanical cooling. The building can also cool itself at night in the same way which further reduces the need for mechanical cooling during the day. When additional cooling is needed, highly efficient chilled beams are used which minimise associated CO₂ emissions.

- 50 The original areas of the building have been insulated to the same standards as would be required for a new building thus reducing the building's heating needs.

The glazing for the atrium roof has a high performance solar coating and graduated frit pattern to maximise daylight and minimise heat gain.

- 51 All lighting in the new building includes occupancy and daylight sensors which means it is only on when needed.
- 52 Ecofon panels have been used to reduce noise throughout. Sletted wood cladding with a noise absorbtion material padding between the wooden slats will reduce noise in the atrium.
- 53 None
- 54 None
- 55 RFID gates are used at the entrance with gunnebo barriers and Intellident security tags in the stock.
- 56 The building management system regulates the heating and cooling system, opening and closing windows automatically according to temperature.

The development was designed to achieve a 'Good' BREEAM rating incorporating measures to improve the overall energy performance of the Quadrangle Building and supplying 20% of the building's energy needs through clean renewable sources.

A plasma screen in the LRC displays data from the building management system reporting bcak performance levels.

57

- 58 Rainwater storage.
The existing quadrangle roof and the new atrium roof have been arranged with rainwater collection in mind. This rainwater is stored in underground tanks and is used to flush the toilets within the building. Photovoltaics have been installed on the roof of the quadrangle building to absorb sunlight and convert the solar energy into direct electricity to be used within the building. They provide an eco-friendly source of electricity that is renewable and non-polluting. Any electricity generated

from the photovoltaics that is surplus to the University's requirements could be sent to the National Grid to be used elsewhere.

Hot water is produced for the building from a roof mounted solar thermal array.

D Schedule of the building process (dates)

- 59 September 2007
- 60 October 2008
- 61 November 2009
- 62 May 2011
- 63 ten months
- 64 31/01/12 – 14/02/12
- 65 15/2/12

E Costs (including taxes)

- 66 0
- 67 0
- 68 0
- 69 0
- 70 0

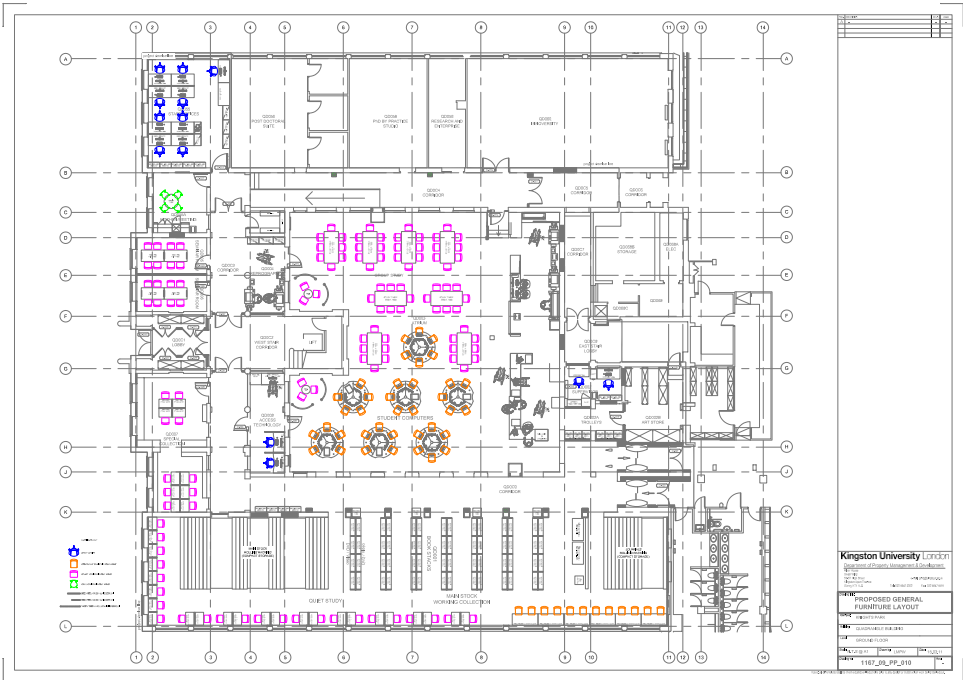
F Publications



Dame Elizabeth Esteve-Coll Centre Atrium and group study area
© Kingston University



Dame Elizabeth Esteve-Coll Centre Atrium during construction
 © Kingston University



Plan Ground Floor

Dame Elizabeth Esteve-Coll Centre. Kingston, United Kingdom

L

Central Saint Martins College of Arts and Design Library. London, United Kingdom

A General information about your library

a Name and address

- 1 College Library within a University Library Service
- 2 Central Saint Martins College of Arts and Design Library /
University of the Arts London
- 3 College: Central Saint Martins College of Arts and Design, University of
the Arts London, Granary Building, 1 Granary Square, London, N1C 4AA,
England
Mother Institution: University of the Arts London, 272 High Holborn,
London, WC1V 7EY, England
- 4 T 0207 514 7190, E info@csm.arts.ac.uk (for College library enquiries)
T 0207 514 7029, E s.gilmour@csm.arts.ac.uk (for CSM Learning
Resources Manager)
- 5 Learning Resources Manager, Central Saint Martins College of Arts and
Design Library: Sarah Gilmour
Director of Libraries and Academic Support Services, University of the
Arts London: Pat Christie
- 6 Sarah Gilmour: Learning Resources Manager, Central Saint Martins
College of Arts and Design Library

b Population served

- 7 4 830 for Central Saint Martins; 21 453 for University of the Arts London
- 8 4 281 for Central Saint Martins; 16 801 for University of the Arts London
- 9 34 for Central Saint Martins; 759 for University of the Arts London

- 10 1006 (348.31 FTE) for Central Saint Martins; 4269 (2077.57 FTE) for University of the Arts London

c Conditions of the library (before the new project)

- 11 1 526 m²
- 12 256
- 13 2 112 linear metres
- 14 2 112 linear metres
- 15 0
- 16 24 FTE for Central Saint Martins
- 17 57 hours per week during term time (31 weeks per year), 20 hpw during Christmas and Easter vacation (6 weeks per year) 32.5 hpw during Summer vacation (14 weeks per year) Closed for 1 week between Christmas and New Year

B The new building: aims and features

a Architect(s)

- 18 Stanton Williams Architects, www.stantonwilliams.com
- 19 Paul Williams
- 20 renovation

b Aims of the new building

- 21 Central Saint Martins Library opened on 3 October 2011. It combines the library collections that were previously held at two separate library sites which had serviced the College with wide-ranging study facilities which support a range of learning styles from group work to silent study. Through its design the architects, Stanton Williams, have sought to celebrate the industrial architecture of the landmark Grade II listed Granary Building as well as providing stunning views over the Regent's Canal and into the College. The library is located on the 2nd and 3rd floors of the Granary, with access via an attractive staircase or via the scenic lift for people with disabilities. The new space totals 1,800 sqm.

The Library Project was one element of a major building project that involved relocating Central Saint Martins College of Arts and

Design to a new campus at Kings Cross – see for more information <http://www.csm.arts.ac.uk>

In turn, this project is part of the Kings Cross major regeneration initiative—see for more information http://www.islington.gov.uk/environment/planning/major_schemes/kings_cross/regenkingsx.asp

c Special Features

- 22 The Library is located on two floors of the 19th Century grain store designed by Lewis Cubitt

The College is located in close proximity to King's Cross and St Pancras Stations and is part of the King's Cross regeneration project. It is also close to the British Library.

- 23 Warehouse conversion retaining original features including wooden beamed ceiling, iron pillars, brickwork and warehouse windows Central light-well a new addition and a key feature of the Granary Building.

C Technical information about the new building

a Floor area (24 to 35)

- 24 2 000 m²

Divided into

- 25 Lower floor is dedicated to group study, upper floor is dedicated to silent study.

Book and periodical stock is located on both floors with the majority on the upper floor.

The majority of the library stock is on open access.

Special rooms (26, 27, 28, 29)

- 26 3 DVD/video viewing stations

- 27 14 online public access catalogues (OPACs)

- 28 Materials and Products Collection: samples of materials and suppliers catalogues.

- 29 2 study booths on the lower floor

Special activities (30, 31, 32)

- 30 N/A

- 31 N/A
- 32 N/A
- 33 Staff areas on the upper and lower floor. Single staff area on the lower floor with capacity for 18 staff members. 1 office for a single occupant on the upper floor and a staff area with capacity for 8 staff and a processing area.
- 34 N/A
- 35 22 single unisex toilets including 2 disabled access toilets, internal staircase from lower to upper floor
- 36 2 levels located on the 2nd and 3rd floors of the Granary Building
- 37 272 (220 study chairs, 1 sofa, 2 armchairs, 24 bespoke study benches) Study chairs and benches supplied by Race Furniture

Divided into

- 38 3
- 39 The building has ubiquitous wireless access with the view that general purpose computing will be based on laptop usage rather than fixed workstations.
- 40 N/A
- 41 269

b Total potential capacity of shelving (linear metres or volumes)

- 42 103 000 books; 891 journal titles including 316 current subscriptions; 2 850 linear metres shelving available. Cantilibra shelving supplied by Demco Interiors.

Including

- 43 2 850 linear metres
- 44 N/A
- 45 N/A
- 46 9 309 Multi-Media Items (incl. 4 829 DVDs, 3,000 videos, 891 CDs, 589 CD-Roms)
- 47 N/A
- 48 Central Saint Martins Library staff: 17 FTE

c Mechanical features

- 49 Displacement ventilation providing constant temperature at 21 °C
- 50 Variable temperature wet system linked with fresh air ventilation
- 51 Computer controlled Prologik lighting system installed throughout the building
- 52 N/A
- 53 2 scenic lifts providing access to the Granary Building. Building served by 9 number Elite lifts
- 54 N/A
- 55 3M RFID system
- 56 Building management system controls all mechanical services, the system installed is manufactured by Trend
- 57 The IT infrastructure supporting CSM is a Cisco network of 6 500 chassis in the Data Centre and 3 750 switches on each floor. There is redundant 1GB WAN connectivity into the building with vertical fibre running from the Data Centre to the communication rooms on the floors and Cat5e 100Mbs to the desktop. Additionally there are 110 Wireless access points.
- 58 SALTO access control with smartcards is used to access all areas of the building; printing and copying facilities are Canon Multi Functional Devices with a cashless payment system in place. The print management systems is Canon Uniflow and the online payment system is WPM.

D Schedule of the building process (dates)

- 59
- 60 There was no architectural competition for the base build as it was purchased from a developer. The Fit Out architect was appointed by the fit out contractor. The fit out contractor appointment competition was in December 2009.
- 61 Tens of thousands of drawings for the Fit Out Stage F – July 2010
- 62 May 2008. Base Build Commencement November 2008. Fit Out Commencement March 2011. Opening of the Building October 2011.
- 63 3,5 Years

64 July–September 2011

65 3rd October 2011

E Costs (including taxes)

66 N/A

67 0

68 0

69 not available

70 not available

F Publications

Art Libraries Journal vol. 36 no.1 2011 Special issue: the architecture and space planning of art libraries p. 22

Regeneration King's Cross: the Central Saint Martin's Collect of Art relocation project.

Architects Journal: <http://www.architectsjournal.co.uk/news/daily-news/stanton-williams-art-school-bags-top-planning-prize/86250>.

Architects Journal: <http://www.architectsjournal.co.uk/news/daily-news/stanton-williams-scoops-planning-for-kings-cross-square-scheme/8624956>.
article



Entrance to the University of Arts London © John Sturrock



Central Atrium in Granary Building © John Sturrock

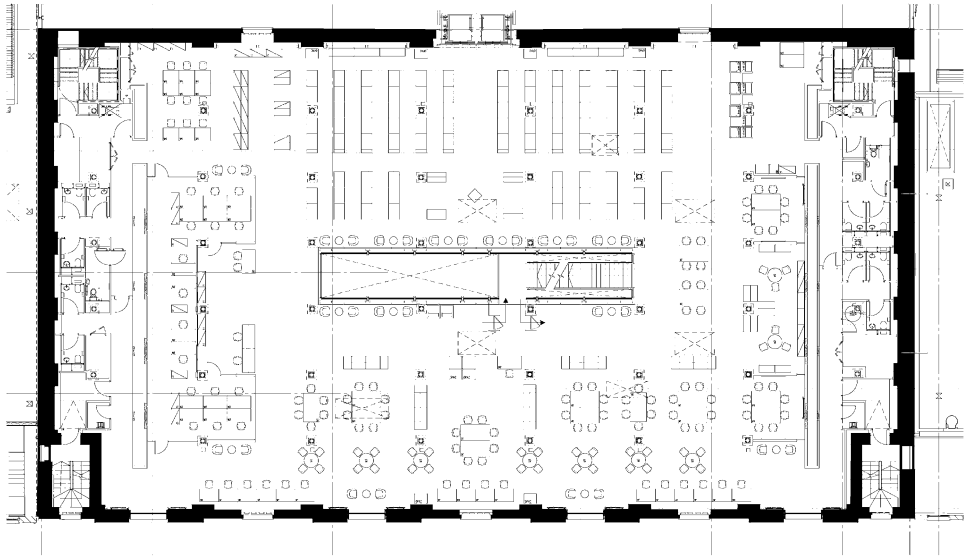
Central Saint Martins College of Arts and Design Library. London, United Kingdom



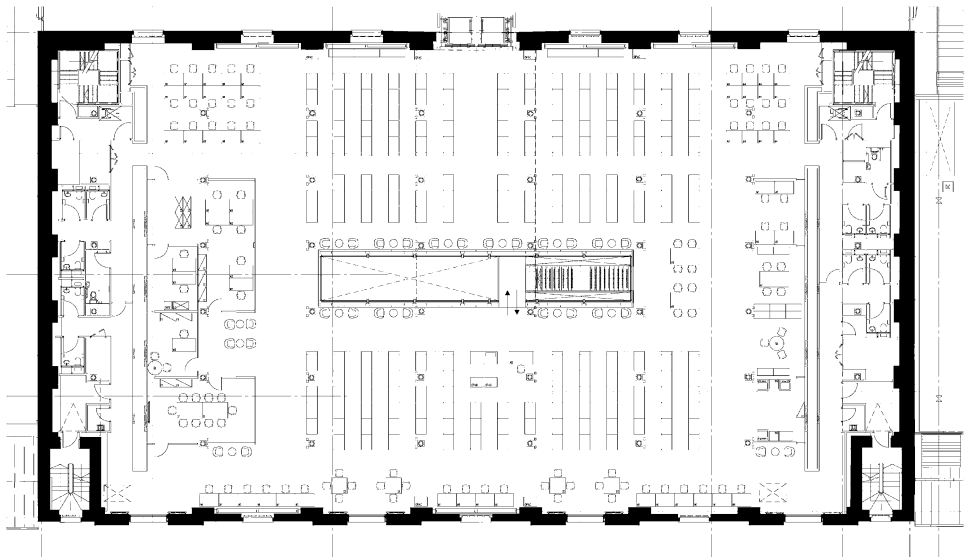
2nd Floor Bookstacks and OPAC © Tony Courtney



Library inside the Granary Building © John Sturrock



2nd Floor Plan © Pringle Brandon



3rd Floor Plan © Pringle Brandon

L

Bodleian Libraries.

Oxford, United Kingdom

A General information about your library

a Name and address

- 1 University library
- 2 Bodleian Libraries /
University of Oxford
- 3 Broad Street, Oxford, OX1 3BG
- 4 T 01865 277158, E richard.ovenden@bodleian.ox.ac.uk
- 5 Dr Sarah Thomas
- 6 Richard Ovenden

b Population served

- 7 80 000
- 8 15 000
- 9 —
- 10 4 000

c Conditions of the library (before the new project)

- 11 18 718 m² NIFA
- 12 302
- 13 83 978 linear metres (2 855 252 nominal volumes)
- 14 3 280 linear metres (111 520 nominal volumes)
- 15 80 698 linear metres (2 743 732 nominal volumes)
- 16 187

- 17 69 hours per week in term, 54 hours per week in vacation, 301 days per year

B The new building: aims and features

a Architect(s)

- 18 Wilkinson Eyre Architects, <http://www.wilkinsoneyre.com/>
 19 Jim Eyre and Geoff Turner
 20 renovation

b Aims of the new building

- 21 Refurbishment and partial rebuild of Grade II listed building. The New Bodleian Library Project has three key objectives:
 The refurbishment of the stack floors to create improved storage spaces for special collections mitigating the risks of fire and internal flooding. These refurbished spaces will comply with the British Standard, and with the National Archives Standard for Record Repositories.
 Provision of new research facilities that provide seminar and group study spaces, enhanced interaction with digital technologies, provision for graduate students and visiting scholars, supporting the externally-funded research projects.
 Enhanced facilities for engaging the general public through exhibitions and events.

c Special Features

- 22 The New Bodleian Library situated in the centre of the City of Oxford at heart of the historic University of Oxford. It is part of an important cityscape and is surrounded by Grade I Listed buildings including the Clarendon Building (Nicholas Hawksmoor) and the Sheldonian Theatre (Sir Christopher Wren).
- 23 The building is a Grade II Listed building of 'special interest'. Built in 1937–39 to a design by Sir Giles Gilbert Scott, it is rectangular in plan on a grid of 13.5'. It is comprised of an eleven-storey central Bookstack surrounded by three-storey accommodation for offices and reading rooms. The central Bookstack is formed from in situ concrete on a steel frame, the outer accommodation is pre-cast concrete on a steel frame. The refurbishment project entails the complete removal and replacement of the central core of the stack, the insertion of a new

entrance on the south side of the building and a large public atrium, with two new exhibition galleries. The new stack will have 4 hours of fire protection and environmental control to BS5454:2000.

C Technical information about the new building

a Floor area (24 to 35)

24 18 828 m² GIFA

Divided into

25 2 131 m², comprising three special collections reading rooms with adjacent open access areas, Enquiries Area, seminar rooms and Centre for the Study of the Book.

Special rooms (26, 27, 28, 29)

26 Range of AV facilities distributed across spaces below.

27 105 m² 17-seater Digital Media Centre with hi-end facilities. Other computing distributed.

28 642 m² of special collections curatorial office accommodation.

29 A total 143 m² comprised of 4 seminar and group study rooms.

Special activities (30, 31, 32)

30 A treasures gallery (120 m²) and a changing exhibitions gallery (164 m²).

31 120 m² 112-seater Lecture Theatre with fixed raked seating.

32 878 m² open plan Blackwell Hall atrium with 120-seater café and potential for special events catering for 250 seated, temporary exhibitions.

33 808 m² Conservation, 67 m² staff common room, 72 m² staff/reader café, 53 m² Admissions Office, 216 m² Imaging Studio, (642 m² curatorial offices excluded here, see 29 above).

34 7 415 m² across three basement levels,

35 2 769 m²

36 3 basement levels, 3 principal above ground levels, central 'floating' core with 5 levels. Public access to Ground Floor.

37 293

Divided into

- 38 N/A
- 39 31
- 40 44
- 41 218

b Total potential capacity of shelving (linear metres or volumes)

42 41 693 linear metres (1 417 460 nominal volumes)

Including

- 43 2 788 linear metres
- 44 37 728 linear metres
- 45 16 117 linear metres (included in 44 above)
- 46 Included in 43 and 44
- 47 64 map planchests, 274 linear metres strong-room
- 48 142

c Mechanical features

- 49 Full air conditioning to BS5454 to stack areas, utilizing low velocity air movements between plenum walls, comfort cooling to office areas and reading rooms.
- 50 Via air-conditioning
- 51 Proximity controlled fluorescents to stack areas. Controlled light levels in exhibition galleries. Natural lighting to atrium via retained Gilbert Scott windows.
- 52 Acoustic paneling to atrium walls
- 53 1 goods lift, 3 passenger lifts provided in two new service cores.
- 54 By lift
- 55 Electro-magnetic detection at exit points, CCTV, IDS
- 56 Full BMS
- 57 Cat 5e
- 58 Access Control System utilizing University Common Card

D Schedule of the building process (dates)

- 59 2006
- 60 Winter 2006
- 61 2010
- 62 August 2011
- 63 3 years
- 64 From August 2014
- 65 Official Opening March 2015

E Costs (including taxes)

- 66 N/A (existing site)
- 67 £61 million
- 68 £5.6 million (direct contracts)
- 69 £8.9 million
- 70 £80.5 million including contingency and Value Added Tax

F Publications



Illustrative view of the Main Entrance by Wilkinson Eyre Architects



Illustrative view of Blackwell Hall by Wilkinson Eyre Architects



Illustrative view of Enquiry Area by Wilkinson Eyre Architects



Ill. view of Charles Wendell David Reading Room by Wilkinson Eyre Architects

Bodleian Libraries. Oxford, United Kingdom



Illustrative view of Conservation Workshop by Wilkinson Eyre Architects



Illustrative view of Treasures Gallery by Wilkinson Eyre Architects



Illustrative view of Lecture Theatre by Wilkinson Eyre Architects

L

Questionnaire:

Description of New University and Research Library Buildings in Europe

A General information about your library

a Name and address

- 1 Type of library (for example: university, college, national, regional, research association, public):
- 2 Name of library: /
2a Name of mother institution
- 3 Address:
- 4 Phone, Fax and E-mail :
- 5 Name of the director of the library:
- 6 Contact person for enquiries:

b Population served

- 7 Current readership, number of registered readers:
- 8 Number of full time students:
- 9 Number of part time students:
- 10 Number of staff in institution (including teachers, professors, researchers and administrators):

c Conditions of the library (before the new project)

- 11 Total floor area (sq. metres):
- 12 Number of reader seats:
- 13 Total capacity of shelving (linear metres or number of books, periodicals):

- 14 in open access storage:
- 15 in closed access stacks:
- 16 Number of library staff (full time equivalent):
- 17 Opening hours to the public (hours per week, days per year):

B The new building: aims and features

a Architect(s)

- 18 Firm:
- 19 Project Architect:
- 20 Type of project

New building:	yes	no
Extension:	yes	no
Renovation:	yes	no

b Aims of the new building

- 21 Short description of the main objectives and purposes of the project:
for example: more holdings in open stacks, more readers seats, development of the library in the field of research, computer and audiovisual materials, development of training for non-student readers, extension of the opening hours to the public, etc.

c Special Features

- 22 Site:
for example: location of the library on a campus or in the city, proximity to other buildngs.
- 23 Architecture:
for example: rectangular or octogonal plan, precast concrete pannels, narrow or high windows, sizes of the modular grid, disabled access, materials selected to reduce maintenance or energy costs, etc.

C Technical information about the new building

a Please give floor area (in sq metres) for questions 24 to 35

- 24 Total gross floor area (incl. corridors, stairs, lifts, technical rooms, etc):

Divided into

25 Open access services (reference room, reading rooms, holdings - books and periodicals, circulation and information desks, etc.):

Special rooms for (please describe number 26, 27, 28, 29):

26 Audiovisual:

27 Computers:

28 Special collections:

29 Seminar room(s):

Special activities (please describe number 30, 31, 32)

30 Exhibition space:

31 Lecture hall:

32 Public refreshments:

33 Administration and staff areas:

34 Closed access stacks:

35 Circulations areas (corridors, stairs, lifts), toilets, technical rooms, etc:

36 Further information (eg. Number of levels, public levels, etc.):

37 Number of reader seats (Total):

Divided into

38 Audiovisual:

39 Computers:

40 Seminar room(s):

41 Regular:

b Total potential capacity of shelving (linear metres or volumes)

42 Books and periodicals (total):

Including:

43 Open access stacks:

44 Closed access stacks:

45 Compact shelving (please indicate if included in 43 or 44):

- 46 Audiovisual materials:
- 47 Other:
- 48 Number of staff required to operate the new library (full-time equivalent):

c Mechanical features

- 49 Ventilation/Air Conditioning:
- 50 Heating:
- 51 Lighting:
- 52 Acoustics:
- 53 Lifts, elevators, escalators:
- 54 Book transportation system:
- 55 Theft detection:
- 56 Building management system:
- 57 Type of IT infrastructure (network type and capacity):
- 58 Other:

D Schedule of the building process (dates)

- 59 Planning, preliminary brief:
- 60 Architectural competition:
- 61 Project drawings and competition between contractors:
- 62 Opening of the construction work:
- 63 Duration of the building work:
- 64 Furnishing and moving the collections:
- 65 Date of opening of the new building:

E Costs (including taxes)

- 66 Site:
- 67 Building:
- 68 Furniture and equipment:

69 Fees:

70 Total:

F Publications

Cuestionario: descripción de bibliotecas de investigación y universitarias de reciente construcción en Europa

A Información general sobre su biblioteca

a Nombre y dirección

- 1 Tipo de biblioteca:
- 2 Nombre: /
2a Nombre de padres institución
- 3 Dirección:
- 4 Teléfono, fax y dirección electrónica:
- 5 Nombre del director de la biblioteca:
- 6 Persona de contacto:

b Usuarios

- 7 Número de usuarios registrados:
- 8 Número de estudiantes de plena dedicación:
- 9 Número de estudiantes de dedicación mixta:
- 10 Número de profesores, asistentes, investigadores y administradores:

c Condiciones de la biblioteca (anterior al nuevo proyecto)

- 11 Superficie total en metros cuadrados:
- 12 Número de asientos:
- 13 Capacidad total de almacenaje (metros lineales o número de vol. y revistas):

- 14 en estanterías de acceso libre:
- 15 en estanterías de acceso restringido:
- 16 Personal (el número equivalente a personas con jornada completa) :
- 17 Horarios de apertura (horas a la semana y días al año):

B El nuevo edificio: propósitos y características

a Arquitecto(s)

- 18 Despacho:
- 19 Arquitecto del proyecto:
- 20 Tipo de proyecto

Nuevo edificio:	si	no
Ampliación:	si	no
Rehabilitación:	si	no

b Propósitos del nuevo edificio

- 21 Breve descripción de los principales objetivos y propósitos del proyecto: por ejemplo: más volúmenes en las zonas de acceso libre, más asientos, desarrollo de la biblioteca en el campo de la investigación, Informática y materiales audiovisuales, desarrollo y aprendizaje para usuarios no estudiantes, ampliación de las horas de apertura al público, etc.

c Características especiales

- 22 Emplazamiento:

por ejemplo: en la ciudad o en el campus universitario, cercana a la universidad, adyacente a medios de transporte público, etc.
- 23 Arquitectura:

por ejemplo: plan rectangular u octogonal, paneles de hormigón prefabricado, ventanas estrechas o altas, tamaños de la red modular, condiciones de accesibilidad, materiales seleccionados para reducir los costes de mantenimiento, etc.

C Información técnica sobre el nuevo edificio

- a Por favor faciliten la superficie por plantas en metros cuadrados en las preguntas 22 a 33

- 24 Superficie total (incluyendo pasillos, escaleras, elevadores, salas de máquinas, etc.):

Dividido entre

- 25 Servicios de acceso libre (salas de lectura, salas de índices, salas de publicaciones, información, etc.):

Salas especiales para (por favor, describa el número 26, 27, 28, 29) :

- 26 Audiovisuales:
 27 Ordenadores:
 28 Colecciones especiales:
 29 Sala(s) de seminarios:

Actividades especiales (por favor, describa el número 30, 31, 32)

- 30 Espacio para exhibiciones:
 31 Sala de conferencias:
 32 Sala de ocio:
 33 Zonas de personal y de administración:
 34 Estanterías de acceso restringido:
 35 Zonas de circulación (pasillos, escaleras, elevadores), aseos, salas de máquinas, etc.:
 36 Más información (número de plantas públicas, etc.):

Dividido entre

- 37 Número de asientos (Total):
 38 Audiovisuales:
 39 Ordenadores:
 40 Sala(s) de seminarios:
 41 Resto:

b Capacidad potencial de almacenaje (metros lineales o volúmenes)

- 42 Libros y publicaciones:
 43 Estanterías de acceso libre:
 44 Estanterías de acceso restringido:

- 45 en compactos:
- 46 Materiales audiovisuales:
- 47 Otros:
- 48 Número de empleados requeridos para el funcionamiento de la nueva biblioteca (equivalente a personas con jornada completa):

c Características técnicas

- 49 Ventilación/Aire acondicionado:
- 50 Calefacción:
- 51 Iluminación:
- 52 Megafonía:
- 53 Elevadores, montacargas, escaleras:
- 54 Sistema de transporte de libros:
- 55 Sistema antirrobo:
- 56 Control informatizado del edificio:
- 57 Tipo y capacidad del cableado informático:
- 58 Otros:

D Calendario

- 59 Planteamiento, borradores iniciales:
- 60 Concurso Arquitectónico:
- 61 Planos y concurso de las empresas constructoras:
- 62 Fecha de inicio de las obras:
- 63 Duración de las obras:
- 64 Traslado de los volúmenes:
- 65 Fecha de apertura del nuevo edificio:

E Costes

- 66 Solar:
- 67 Edificación:

198

68 Equipamientos y mobiliario:

69 Tasas:

70 Total:

F Publicaciones

Questionnaire: sur les nouveaux bâtiments de bibliothèques universitaires et de recherche en Europe

A Information générale sur la bibliothèque

a Nom et adresse

- 1 Type de bibliothèque :
- 2 Nom : /
2a Nom de la institution mère
- 3 Adresse :
- 4 Numéros de Téléphone, Fax et E-Mail :
- 5 Nom du directeur de la bibliothèque :
- 6 Personne à contacter :

b Population desservie

- 7 Nombre de lecteurs inscrits :
- 8 Nombre d'étudiants à plein temps :
- 9 Nombre d'étudiants à temps partiel :
- 10 Nombre d'enseignants, d'enseignants-chercheurs et d'administratifs :

c Situation de la bibliothèque (avant le nouveau projet)

- 11 Superficie totale (en mètres carrés) :
- 12 Nombre de places de consultation :
- 13 Capacité totale de stockage (en mètres linéaires ou en vol. de livres, de périodiques) :

- 14 collections en libre accès :
- 15 collections en magasins fermés :
- 16 Nombre de personnel (équivalents plein temps) :
- 17 Ouverture au public (nombre d'heures par semaine et de jours par an) :

B Le nouveau bâtiment : buts et caractéristiques

a Architecte(s)

- 18 Agence :
- 19 Chef de projet :
- 20 Type de projet

construction :	oui	non
Extension :	oui	non
Aménagement :	oui	non

b Buts du nouveau bâtiment

- 21 Courte description des principaux objectifs du projet :
par exemple : davantage de documents en libre accès, davantage de places de consultation, développement de la bibliothèque dans le domaine de la recherche, documents informatiques et audiovisuels, formation des lecteurs non étudiants, extension des horaires d'ouverture de la bibliothèque, etc.

c Caractéristiques

- 22 Localisation, site :
par exemple : localisation de la bibliothèque sur un campus ou dans la ville, proche de l'université, proche des transports publics, etc.
- 23 Architecture :
par exemple : plan rectangulaire ou octogonal, panneaux préfabriqués en béton, façades très vitrées ou peu vitrées, dimensions de la trame de construction, accès pour handicapés, matériaux utilisés pour réduire les coûts de maintenance, etc.

C Informations techniques sur le nouveau bâtiment

- a Indiquer la surface (en mètres carrés) pour les questions 22 à 33

24 Surface totale dans oeuvre (incluant les circulations, sanitaires et locaux techniques) :

Divisé en

25 Services en libre accès (références, consultation, collections de livres et de périodiques, bureaux d'information et de prêt, etc) :

Salles spéciales pour (SVP, décrire les salles 26, 27, 28, 29) :

26 Audiovisuel :

27 Informatique :

28 Collections spécialisées :

29 Salle(s) de formation/réunion :

Salles pour autres activités (SVP, décrire les salles 30, 31, 32)

30 Espace d'exposition :

31 Salle de conférence :

32 Cafétéria, etc :

33 Services internes pour le personnel :

34 Magasins fermés :

35 Zones de circulation (couloirs, escaliers, ascenseurs), sanitaires, locaux techniques :

36 Autres informations (par ex. : nombre total de niveaux, nombre de niveaux publics) :

37 Nombre de places de lecture (Total) :

Divisé en

38 Audiovisuel :

39 Informatique :

40 Salle(s) de formation/réunion :

41 Places de travail :

b Capacité potentielle totale de stockage (mètres linéaires ou vol.)

42 Livres et périodiques :

43 En libre accès :

- 44 En magasins fermés :
- 45 dont en rayonnages mobiles :
- 46 Documents audiovisuels :
- 47 Autres :
- 48 Nombre de personnel nécessaire pour faire fonctionner la nouvelle bibliothèque (équivalent plein temps) :

c Caractéristiques techniques

- 49 Ventilation/Climatisation :
- 50 Chauffage :
- 51 Eclairage :
- 52 Acoustique :
- 53 Ascenseurs, monte-charges, escalators :
- 54 Système de transport automatique de documents :
- 55 Détection antivol :
- 56 Gestion informatisée du bâtiment :
- 57 Type de câblage informatique et débit du réseau :
- 58 Autres :

D Échéancier de réalisation

- 59 Élaboration du programme :
- 60 Concours d'architecture :
- 61 Élaboration des plans et appel d'offres aux entreprises :
- 62 Démarrage des travaux :
- 63 Durée des travaux :
- 64 Équipement mobilier et déménagement :
- 65 Date d'ouverture du bâtiment :

E Coûts

66 Terrain :

67 Bâtiment :

68 Équipement en mobilier et en matériel :

69 Honoraires :

70 Total :

F Publications

Fragebogen: Neue Gebäude von Universitätsbibliotheken und Wissenschaftlichen Bibliotheken

A Allgemeine Information über die Bibliothek

a Name und Adresse

- 1 Bibliothekstyp:
- 2 Name: /
 - 2a Name der übergeordneten Institution
- 3 Adresse:
- 4 Telefon- und Fax-Nummer, E-mail-Adresse:
- 5 Name des Direktors / der Direktorin der Bibliothek:
- 6 Kontaktperson

b Publikum

- 7 Anzahl der eingeschriebenen Benutzerinnen und Benutzer:
- 8 Anzahl der Vollzeit-Studierenden:
- 9 Anzahl der Teilzeit-Studierenden:
- 10 Anzahl der Dozierenden, Forschenden und der Personen in der Verwaltung:

c Situation der Bibliothek (vor dem neuen Projekt)

- 11 Gesamtfläche (in m²):
- 12 Anzahl Benutzerarbeitsplätze:
- 13 Gesamt Kapazität Stellfläche (laufender Meter oder Anzahl Bände von Büchern, Zeitschriften, usw.):

- 14 in Freihand-Aufstellung:
- 15 in geschlossenen Magazinen:
- 16 Anzahl Beschäftigte (Vollzeit-Äquivalente):
- 17 Öffnungszeiten (Stunden pro Woche und Tage pro Jahr):

B Das neue Gebäude: Ziele und Eigenschaften

a Architekt(en)

- 18 Büro:
- 19 Projektleiter/in:
- 20 Art des Projektes

Neubau:	ja	nein
Erweiterung:	ja	nein
Renovation:	ja	nein

b Ziele des neuen Gebäudes

- 21 Kurze Beschreibung der Hauptziele und Absichten des Projektes:
zum Beispiel: grössere Bestände in Freihand-Aufstellung, mehr Benutzerarbeitsplätze, Ausbau der Bibliothek im Bereich Forschung, EDV und AV-Material, Schulung von nichtuniversitärem Publikum, Erweiterung der Oeffnungszeiten der Bibliothek, etc.

c Spezielle Merkmale

- 22 Ort:
zum Beispiel: steht die Bibliothek auf einem Campus oder in der Stadt, in unmittelbarer Nähe der Universität, in der Nähe von öffentlichen Verkehrsmitteln, etc.
- 23 Architektur:
zum Beispiel: rechteckiger oder vieleckiger Grundriss, vorgefertigte Betonelemente, schmale oder hohe Fenster/stark oder wenig verglaste Fassaden, Maße des Konstruktionsrasters, Zugang für Behinderte, Wahl der Baumaterialien mit der Absicht, die Unterhaltskosten zu reduzieren, etc.

C Technische Information über das neue Gebäude

a Gesamtfläche (in m²) für die Fragen 22 bis 33

- 24 Netto-Grundfläche (inkl. Korridore, Treppen, Aufzüge, technische Räume etc.):

Unterteilt in

- 25 Frei zugängliche Benutzungsbereiche (Auskunftsräume, Lesesäle, Buch- und Zeitschriftenbestände, Ausleihe, Information, etc.):

Spezielle Räume für (Bitte beschreiben Sie die Räume in Nr. 26, 27, 28, 29):

- 26 audiovisuelle Medien:

- 27 Computer:

- 28 Sondersammlungen:

- 29 Ausbildungs- und Seminarraum (-räume):

Räume für andere Aktivitäten (Bitte beschreiben Sie die Räume in Nr. 30, 31, 32)

- 30 Ausstellungsraum:

- 31 Vortragssaal:

- 32 Cafeteria, etc:

- 33 Räume für Verwaltung und Personal:

- 34 Geschlossene Magazinräume:

- 35 Nebennutzfläche: Verkehrsfläche (Korridore, Treppen, Aufzüge), Toiletten, technische Räume:

- 36 Weitere Informationen (z.B. Anzahl Stockwerke, Anzahl öffentliche Stockwerke):

- 37 Anzahl Benutzerarbeitsplätze (Total):

Unterteilt in

- 38 audiovisuelle:

- 39 Computer:

- 40 Ausbildungs- und Seminarraum (-räume):

- 41 übrige Benutzerarbeitsplätze:

b Gesamtkapazität Stellfläche (Laufmeter oder Bände)

- 42 Bücher und Zeitschriften:
- 43 Freihand-Aufstellung:
- 44 geschlossene Magazine:
- 45 davon Kompakt-Magazine:
- 46 audiovisuelle Materialien:
- 47 Andere:
- 48 Personal, das für den Betrieb des neuen Gebäudes benötigt wird (Vollzeit-Aequivalente):

c Mechanische Eigenschaften

- 49 Lüftung/Klimatisierung:
- 50 Heizung:
- 51 Beleuchtung:
- 52 Akustik:
- 53 Aufzüge, Rolltreppen:
- 54 Buchtransportsystem:
- 55 Diebstahl-Sicherungssystem:
- 56 Gebäudeautomatisation:
- 57 Typ der IT-Verkablung und Leistung:
- 58 Andere:

D Zeitplan

- 59 Planung, Bauprogramm:
- 60 Architekturwettbewerb:
- 61 Architekturpläne und Ausschreibung für ausführende Firmen:
- 62 Beginn der Bauarbeiten:
- 63 Dauer der Bauarbeiten:
- 64 Einrichtung Mobiliar und Umzug der Bestände:
- 65 Datum der Eröffnung des neuen Gebäudes:

E Kosten

- 66 Grundstück:
- 67 Gebäude:
- 68 Mobiliar und Ausrüstung:
- 69 Honorare:
- 70 Total:

F Veröffentlichungen

Questionario: descrizione nuovi edifici di biblioteche universitarie e di ricerca in Europa

A Informazioni generali sulla biblioteca

a Nome e indirizzo

- 1 Tipo di biblioteca:
- 2 Nome: /
 - 2a Nome di genitore istituzione
- 3 Indirizzo:
- 4 Telefono, fax e indirizzo di posta elettronica:
- 5 Nome del direttore della biblioteca:
- 6 Persona da contattare:

b Utenza

- 7 Numero di utenti registrati:
- 8 Numero di studenti a tempo pieno:
- 9 Numero di studenti a tempo parziale:
- 10 Numero di docenti, assistenti, ricercatori e personale amministrativo:

c Caratteristiche della biblioteca (prima del nuovo progetto)

- 11 Superficie totale (in m²):
- 12 Numero di posti di lettura:
- 13 Capacità di stivaggio (espressa in metri lineari o numero di libri e periodici):
- 14 a scaffale aperto:

- 15 a magazzino:
- 16 Unità di personale (espresso in full time equivalent):
- 17 Orario di apertura (espresso in ore di apertura settimanali e in numero di giorni per anno):

B Il nuovo edificio: obiettivi e caratteristiche

a Architetto(i)

- 18 Studio:
- 19 Architetto progettista:
- 20 Tipo di progetto

Nuovo edificio:	si	no
Ampliamento :	si	no
Restauro :	si	no

b Obiettivi del nuovo edificio

- 21 Breve descrizione dei principali obiettivi del progetto:
per esempio: maggior numero di documenti ad accesso libero, più posti di lettura, maggior sviluppo della biblioteca verso la ricerca, documentazione elettronica e audiovisivi, sviluppo di un utenza non istituzionale, Estensione degli orari di apertura, ecc.

c Caratteristiche

- 22 Localizzazione:
per esempio: biblioteca in un campus universitario o in città, vicina ad altri edifici universitari, raggiungibile con i mezzi pubblici, ecc.
- 23 Architettura:
per esempio: a pianta rettangolare o ottagonale, a pannelli prefabbricati, finestre strette o alte, dimensioni dello schema strutturale, accesso ai disabili, utilizzo di materiali che riducano i costi di manutenzione

C Informazioni tecniche sul nuovo edificio

a Rispondere indicando la superficie in m² alle domande da 22 a 33

- 24 Superficie totale (inclusi corridoi, scale, ascensori, locali tecnici, ecc.):

Diviso in

25 Aree ad accesso libero (reference, sale di lettura, sale di consultazione libri e periodici, punti informativi e di prestito, ecc.):

Sale ad uso speciale per (per la descrizione utilizzare i numeri 26, 27, 28, 29):

26 Audiovisivi:

27 Postazioni informatiche:

28 Collezioni particolari:

29 Sale seminariali:

Attività speciali (per la descrizione utilizzare i numeri 30, 31, 32):

30 Spazi espositivi:

31 Sala conferenze:

32 Caffetteria:

33 Spazi dedicati al personale:

34 Magazzini chiusi al pubblico :

35 Collegamenti verticali e orizzontali (corridoi, scale, ascensori), servizi igienici, locali tecnici:

36 Altri dati (es. numero di piani, numero di piani accessibili al pubblico, ecc.):

37 Numero di posti di lettura (totale):

Diviso in

38 Postazioni per gli audiovisivi:

39 Postazioni informatiche:

40 Sala/e seminari:

41 Postazioni di lavoro:

b Capacità massima di stoccaggio (espressa in metri lineari o volumi)

42 Libri e periodici:

43 a scaffale aperto:

44 a magazzino:

45 in scaffali compatti:

46 Materiale audiovisivo:

- 47 Altro:
- 48 Personale necessario per il funzionamento della nuova biblioteca (espresso in full time equivalent):

c Caratteristiche tecniche

- 49 Sistema di climatizzazione:
- 50 Sistema di riscaldamento:
- 51 Illuminazione:
- 52 Acustica:
- 53 Ascensori, montacarichi, scale:
- 54 Sistemi di trasporto dei libri:
- 55 Sistema Antitaccheggio:
- 56 Gestione computerizzata dell'edificio:
- 57 Tipo e capacità di cablaggio:
- 58 Altro:

D Tempi di realizzazione del nuovo edificio

- 59 Elaborazione del programma:
- 60 Concorso per la progettazione:
- 61 Progettazione e gara di appalto per la nomina della ditta esecutrice:
- 62 Apertura del cantiere:
- 63 Durata del cantiere:
- 64 Allestimento arredi e trasloco delle collezioni:
- 65 Data di apertura del nuovo edificio:

E Costi

- 66 Terreno:
- 67 Edificio:
- 68 Arredi e attrezzature:
- 69 Onorario:

70 Totale:

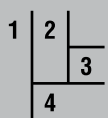
F Pubblicazioni

Questionario: descrizione nuovi edifici di biblioteche universitarie e di ricerca in Europa



The Art of Partnership

Quality, accuracy and consistency in every detail. The coordinated effort of professionals from many fields. The ability to solve problems and the courage to search for new approaches. Is this an art-form? Maybe. In either case we do it well.



- 1/ Charles University in Prague, Faculty of Arts Library
- 2/ Tomas Bata University in Zlín
- 3/ Pardubice University, Faculty of Chemical Technology
- 4/ National Technical Library, Prague

Metrostav a.s.
 Koželužská 2246, Prague 8
 Czech Republic

METROSTAV

člen DDM Group

www.metrostav.cz



HIGH
QUALITY

PROFESSIONAL RACK SYSTEMS

for warehouses, archives and libraries.
maximal flexibility of system.
Backstopper, shelf dividers, slide-out shelves...
All original rack parts.
Reference from CZ and EU.



Dirp company
Rack systems - metal furniture
Headquarters address: Cejl 40/ 107, 602 00 Brno
Office: areál Nivky 630, 664 56 Blučina
tel: 543 237 004 / fax: 543 217 369

www.dirp.cz

OUT NOW!



WAVER

Designed by Konstantin Grcic
Developed by Vitra in Switzerland



Your library – our solution.

FOREG library shelving systems attract by their functionality, user-friendliness and timeless design. A key element of any interior, they make a major contribution to the harmonious overall impression of a library. For further information please contact:



Austria: **Forster Metallbau Gesellschaft m. b. H.**, A-3340 Waidhofen/Ybbs, Weyrer Strasse 135, Phone: +43 7442 501-0
E-Mail: forster@forster.at, www.forster.at • Slovakia: **Forster archívna a dopravná technika s.r.o.**, 82101 Bratislava
Bajkalská 29/D, Phone: +421 902 702 464, E-Mail: info@forster.sk, www.forster.sk



Queen Mary University of London – UK



National Technical Library – CZ



J. Selye University Komárno – SK



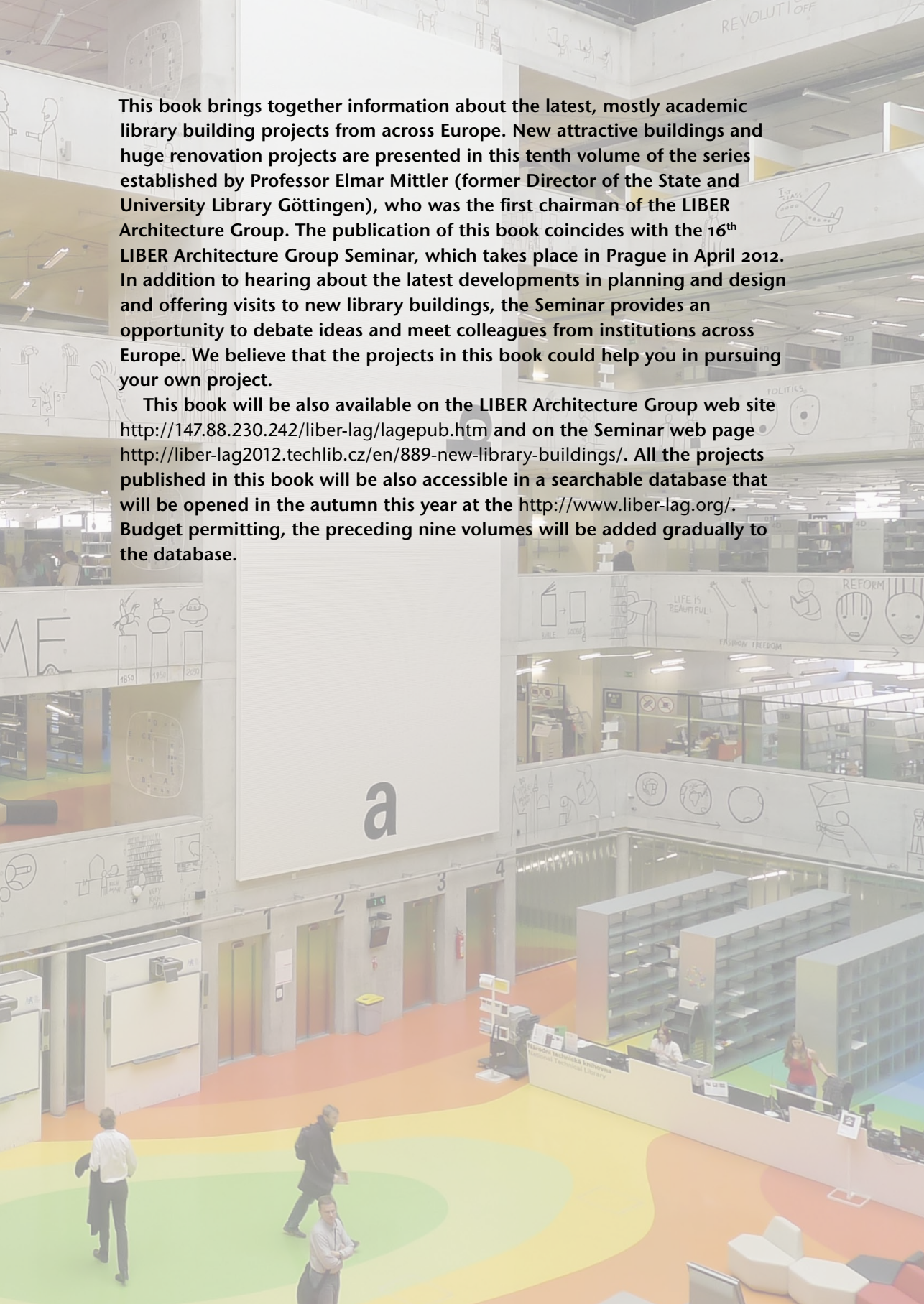
Queen Margaret University – UK

techo[®]
Members of Royal Ahrend

TECHO is a leader in the provision of comprehensive services for the furnishing of commercial interiors in Central and Eastern Europe. It is also an important producer of office furniture in the Czech Republic.

Since 2005 it is part of the major Dutch furniture group **ROYAL AHREND NV**.

www.techo.com

The background image shows a modern library atrium. The walls are covered in hand-drawn sketches and diagrams, including a clock, a person, a plane, and various icons. The floor is painted in large, colorful sections of green, yellow, and orange. In the foreground, several people are walking. In the background, there are bookshelves and a service counter. The overall atmosphere is bright and creative.

This book brings together information about the latest, mostly academic library building projects from across Europe. New attractive buildings and huge renovation projects are presented in this tenth volume of the series established by Professor Elmar Mittler (former Director of the State and University Library Göttingen), who was the first chairman of the LIBER Architecture Group. The publication of this book coincides with the 16th LIBER Architecture Group Seminar, which takes place in Prague in April 2012. In addition to hearing about the latest developments in planning and design and offering visits to new library buildings, the Seminar provides an opportunity to debate ideas and meet colleagues from institutions across Europe. We believe that the projects in this book could help you in pursuing your own project.

This book will be also available on the LIBER Architecture Group web site <http://147.88.230.242/liber-lag/lagepub.htm> and on the Seminar web page <http://liber-lag2012.techlib.cz/en/889-new-library-buildings/>. All the projects published in this book will be also accessible in a searchable database that will be opened in the autumn this year at the <http://www.liber-lag.org/>. Budget permitting, the preceding nine volumes will be added gradually to the database.